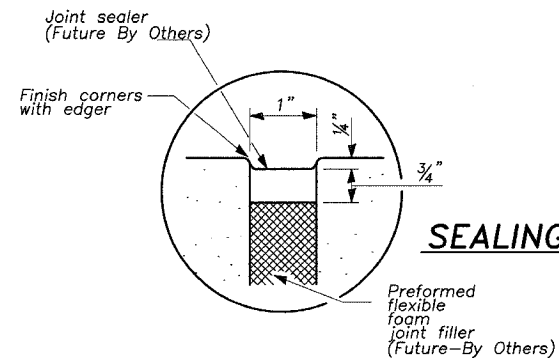


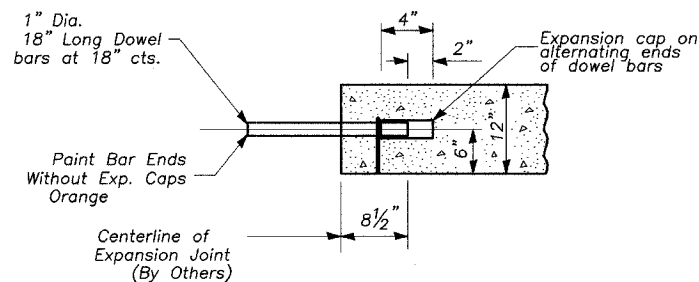
FAS ROUTE NO	SEC	COUNTY	TOTAL SHEETS	SHEET NO
-	*	LEE	23	14

ILLINOIS PROJECT TE-D2(115)

* 01-P4000-00-BT

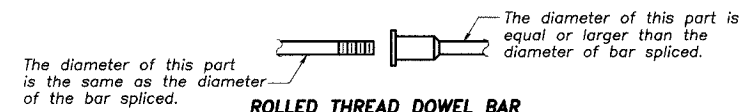


SEALING DETAIL



TRANSVERSE EXPANSION JOINT AT STA. 108+62.5

Note: Cost of furnishing and installing dowels considered incidental to Concrete Structures Expansion Joint Shall Be Completed by Others



ROLLED THREAD DOWEL BAR



**** ONE PIECE**

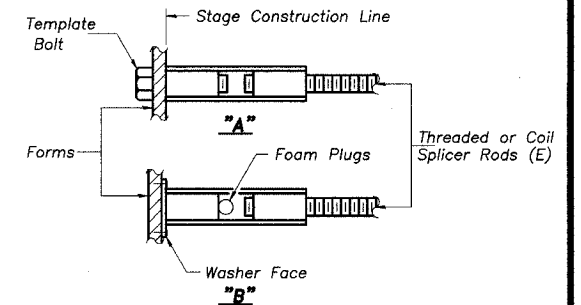
Wire Connector



WELDED SECTIONS

BAR SPLICER ASSEMBLY ALTERNATIVES

** Heavy Hex Nuts conforming to ASTM A 563, Grade C, D or DH may be used.

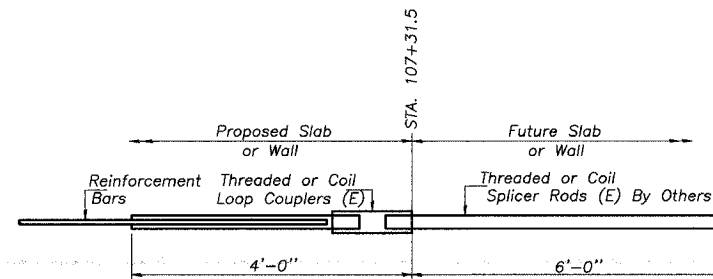


INSTALLATION AND SETTING METHODS

"A": Set bar splicer assembly by means of a template bolt.
 "B": Set bar splicer assembly by nailing to wood forms or cementing to steel forms.
 (E) : Indicates epoxy coating.

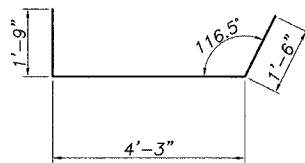
11'-8"	a ₆
14'-8"	a ₉
8'-9"	a ₁₁
4'-3"	a ₁₃
19'-3"	a ₁₅

a₆, a₉, a₁₁, a₁₃, a₁₅ BARS

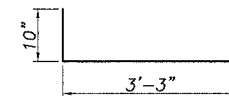


BAR SPLICER ASSEMBLY DETAIL FOR #5 BAR

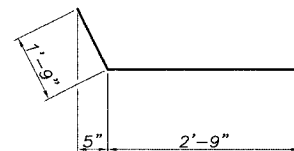
Min. Capacity = 23.0 kips - tension
Min. Pull-out Strength = 9.2 kips - tension
No. Required = 47



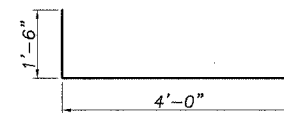
d₃ BAR



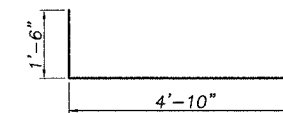
d BAR



d₄ BAR



d₂ BAR



v₁ BAR

BILL OF MATERIAL

Bar	No.	Size	Length	Shape	Location
a ₆	37	#5	12'-5"		Peoria
a ₉	27	#5	15'-5"		Peoria
a ₁₀	27	#8	14'-9"		Peoria
a ₁₁	22	#5	9'-6"		Peoria
a ₁₂	35	#8	11'-9"		Peoria
a ₁₃	17	#5	5'-0"		Peoria
a ₁₄	17	#8	6'-8"		Peoria
a ₁₅	20	#5	20'-0"		Peoria
a ₁₆	20	#8	19'-0"		Peoria
b ₉	26	#5	26'-0"		Peoria
b ₁₀	6	#5	11'-3"		Peoria
b ₁₁	18	#5	18'-3"		Peoria
b ₁₂	26	#5	22'-6"		Peoria
d	164	#5	4'-1"		Peoria
d ₂	84	#5	5'-6"		Peoria
d ₃	84	#5	7'-6"		Peoria
d ₄	27	#5	4'-6"		Seawall
e ₁₀	6	#5	26'-0"		Peoria
e ₁₁	11	#5	26'-1"		Peoria
e ₁₂	11	#5	15'-3"		Peoria
e ₁₃	6	#5	25'-0"		Peoria
e ₁₄	11	#5	22'-11"		Peoria
e ₁₅	6	#5	11'-11"		Peoria
e ₁₆	17	#5	21'-5"		Peoria
e ₁₇	3	#5	40'-0"		Seawall

Concrete Structures	Cu. Yds.	73.8
Reinforcement Bars, Epoxy Coated	Lbs.	10450
Form Liner Textured Surface	Sq. Yd.	15.4
Bar Splicers	Each	47

REINFORCEMENT BARS DESIGNATED (E) ON THE PLAN DRAWINGS ARE TO BE EPOXY COATED.

7x2 BARS INDICATES 7 LINES OF BARS WITH 2 LENGTHS PER LINE.

© WENDLER ENGINEERING SERVICES, INC. 2004

WENDLER ENGINEERING SERVICES, INC.

Structural & Civil Engineers—Land Surveying—Environmental Services
 Illinois Professional Design Firm No. 184-000848



698 TIMBER CREEK ROAD - P.O. BOX 486 - DIXON, IL 61021 - 815-288-2261
 28 E. MARION - SUITE 3 - PRINCETON, IL 61356 - 815-879-4731
 1770 WEST STATE ST. - SYCAMORE, IL 60178 - 815-895-5008
 804 FREEPORT RD. - STERLING, IL 61081 - (815) 626-4428
 E-MAIL: info@wendler.nu

SCALE: 1"=NTS

REVISION	DATE	SURVEYED BY	JOB NO.	DRAWN BY	DESIGNED BY
			99022	BEH	
		BOOK NO.	DRAWING NAME	DRAWING DATE	
			RET-WALL-DTLS	2/16/2004	
TITLE					
RETAINING WALL DETAILS					
DIXON PARK DISTRICT					