

| FAS ROUTE NO. | SEC | COUNTY | TOTAL SHEETS | SHEET NO |
|---------------|-----|--------|--------------|----------|
| - | * | LEE | 23 | 16 |

ILLINOIS PROJECT TE-D2(115)

* 01-P4000-00-BT

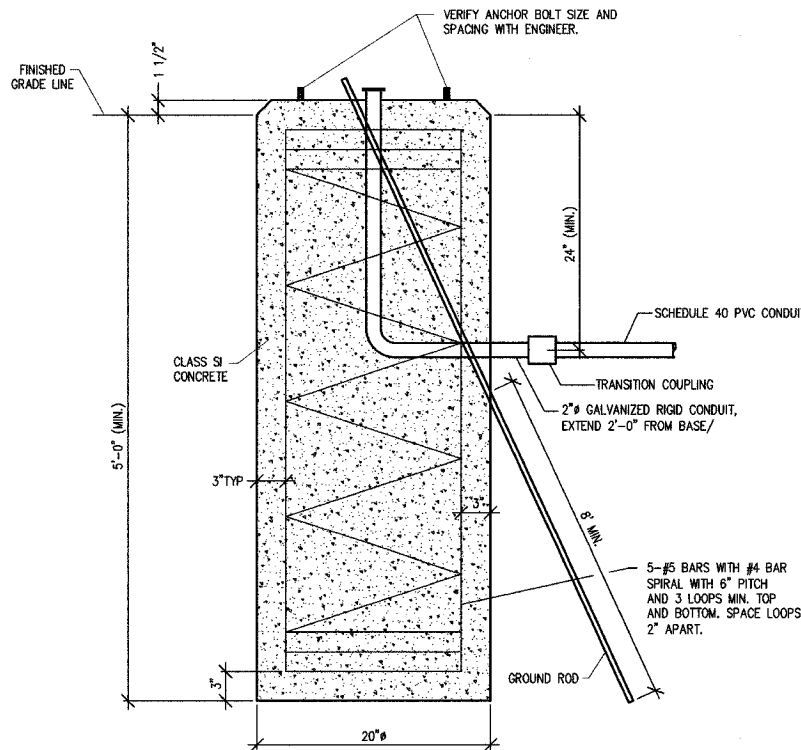
TREE REPLACEMENT SCHEDULE

| CODE NO. | SCIENTIFIC NAME | COMMON NAME | SIZE | UNIT | LOCATION | QUANTITY |
|----------|--------------------|---------------------|----------------|------|----------|----------|
| A2007174 | ACER SACCHARUM 06 | SUGAR MAPLE | 1 3/4" - 2" BB | EACH | * | 8 |
| A2007114 | QUERCUS RUBRA | RED OAK | 1 3/4" - 2" BB | EACH | * | 8 |
| B2005064 | MALUS SNOWDRIFT 10 | SNOWDRIFT CRABAPPLE | 5-6" BB | EACH | * | 8 |
| | | | | | | |
| | | | | | | |
| | | | | | | |
| | | | | | | |
| | | | | | | |
| | | | | | | |
| | | | | | | |

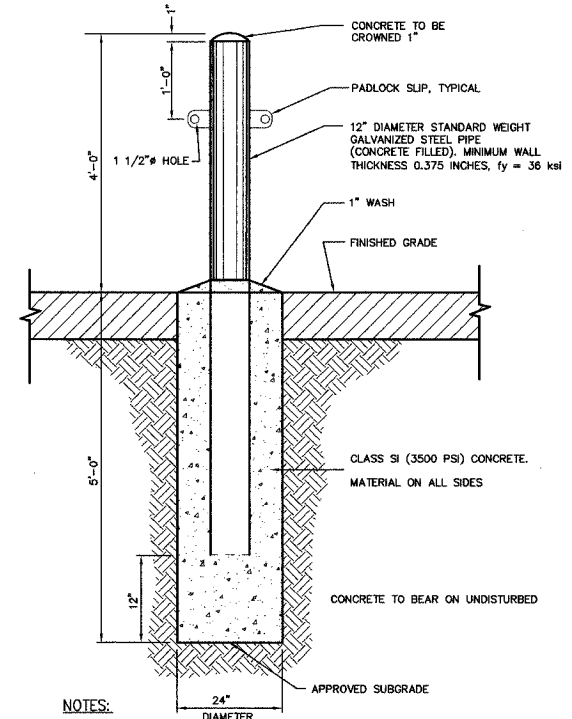
* LOCATIONS SHALL BE DETERMINED BY PARK DISTRICT

ALL DIMENSIONS ARE IN MILLIMETERS (INCHES) UNLESS OTHERWISE NOTED.

5-15-91 90.4



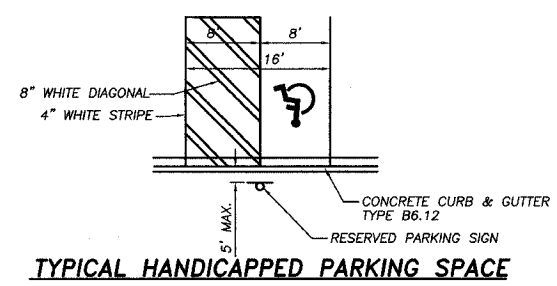
LIGHT POLE FOUNDATION DETAIL



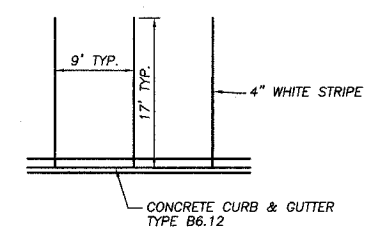
NOTES:

- WHEN PROTECTION POSTS ARE TO BE USED FOR PROTECTION OF HANDICAP PARKING SIGNS OR OTHER TRAFFIC SIGNS, SIGN SUPPORTING POSTS SHALL BE IMBEDDED A MINIMUM OF THREE (3) FEET INTO THE CONCRETE.
- POST SHALL BE PAINTED AS FOLLOWS:
 - A. SOLVENT CLEAN TO REMOVE OIL, GREASE AND OTHER CONTAMINANTS.
 - B. APPLY METAL PRIMER FOR GALVANIZED SURFACES.
 - C. APPLY TWO (2) FINISH COATS OF APPROVED EXTERIOR PAINT FOR METAL SURFACES.
 - D. PAINTING SHALL BE CONSIDERED INCIDENTAL TO THE INSTALLATION OF THE POSTS.

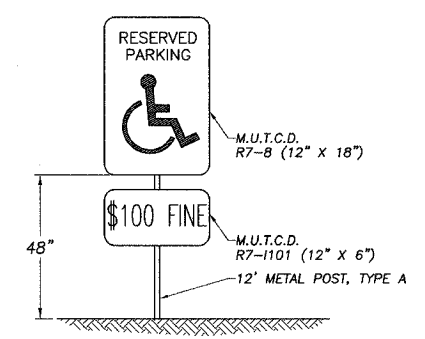
GUARD POSTS, SPECIAL



TYPICAL HANDICAPPED PARKING SPACE

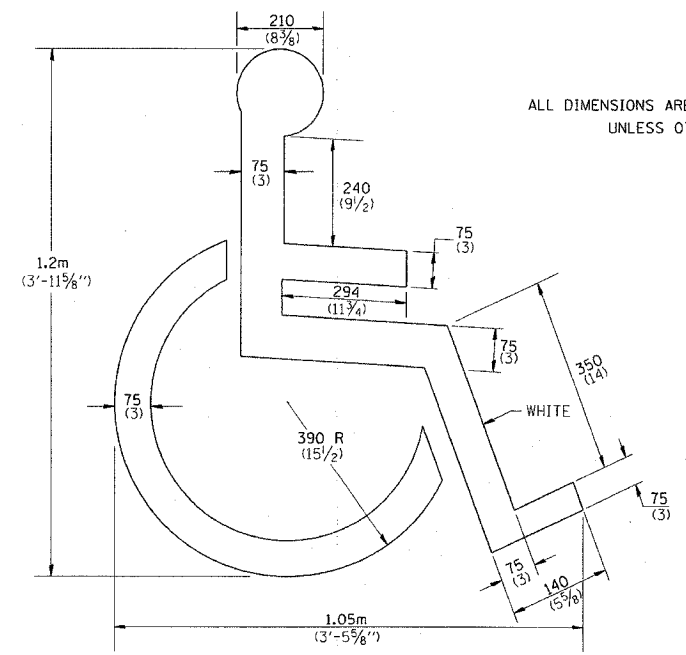


TYPICAL PARKING SPACE



HANDICAP SIGNAGE DETAIL

DISABLED SYMBOL



ALL DIMENSIONS ARE IN MILLIMETERS (INCHES) UNLESS OTHERWISE NOTED.

QUANTITY 0.27 m² (2.9 ff)

REVISED 5-4-94 69.4

© WENDLER ENGINEERING SERVICES, INC. 2004

WENDLER ENGINEERING SERVICES, INC.
 Structural & Civil Engineers—Land Surveying—Environmental Services
 Illinois Professional Design Firm No. 184-000848

1968 - 2004
 AFTER 36 YEARS
 WE'RE STILL "Turning Ideas... Into Reality!"

698 TIMBER CREEK ROAD - P.O. BOX 486 - DIXON, IL 61021 - 815-288-2261
 28 E. MARION - SUITE 3 - PRINCETON, IL 61356 - 815-879-4731
 1770 WEST STATE ST. - SYCAMORE, IL 60178 - 815-895-5008
 804 FREEPORT RD. - STERLING, IL 61081 - (815) 626-4428
 E-MAIL: info@wendler.nu

| | | | | | |
|----------|------|-------------|---------------------|--------------|-------------|
| REVISION | DATE | SURVEYED BY | JOB NO. | DRAWN BY | DESIGNED BY |
| | | | 99022 | BDS | |
| | | | DRAWING NAME | DRAWING DATE | |
| | | | DETAILS | 2/3/2004 | |
| | | | TITLE | | |
| | | | GENERAL DETAILS | | |
| | | | DIXON PARK DISTRICT | | |