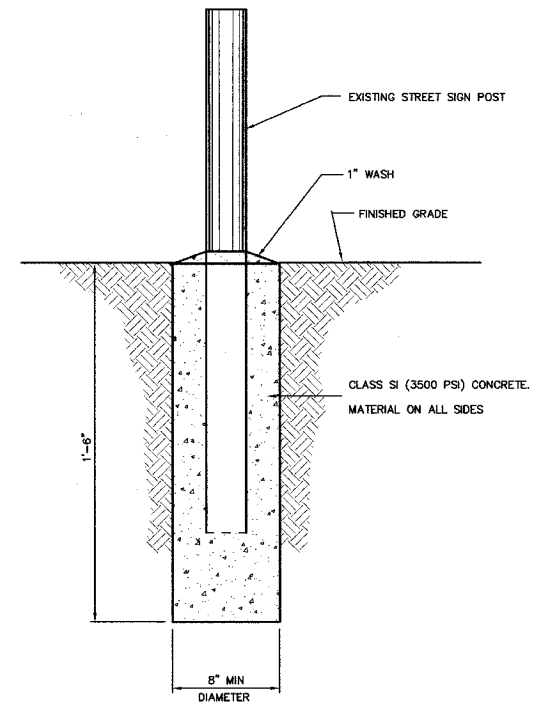


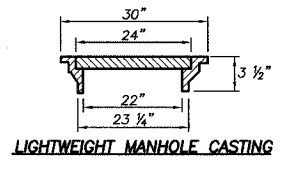
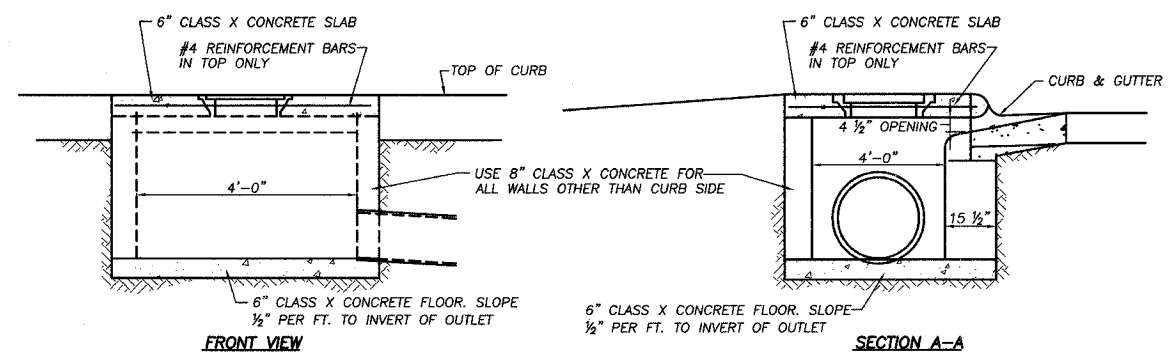
| | | | | |
|---------------|-----|--------|--------------|-----------|
| FAS ROUTE NO. | SEC | COUNTY | TOTAL SHEETS | SHEET NO. |
| | * | DEKALB | 26 | 4 |

ILLINOIS PROJECT BHOS-037(39)

* 99-00103-01-BR

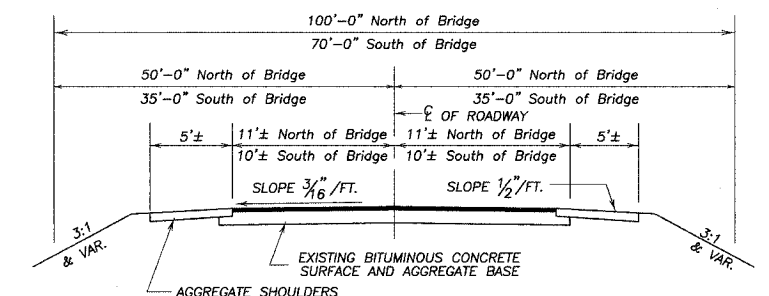


METHOD OF RESETTING STREET SIGN POSTS
2 TOTAL REQUIRED
COST INCIDENTAL TO CONTRACT

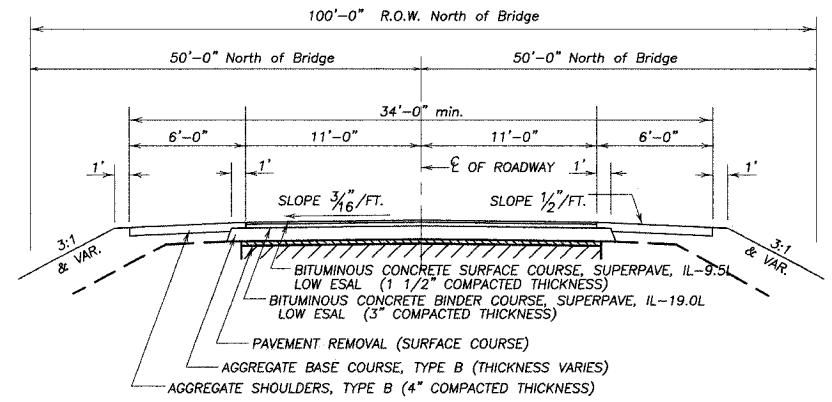


NOTES:
THE INTERIOR WALLS & INVERT SHALL BE COATED WITH A LINSEED OIL PROTECTIVE COAT AFTER WORK ON INLET IS COMPLETE.
ALL EXCAVATION, BACKFILLING, CLASS X CONCRETE, CONCRETE BLOCKS, MANHOLE FRAMES & LIDS, REINFORCEMENT BARS & ETC. USED IN CONSTRUCTION SHALL BE PAID FOR AT THE CONTRACT UNIT PRICE FOR INLET SPECIAL NO. 2

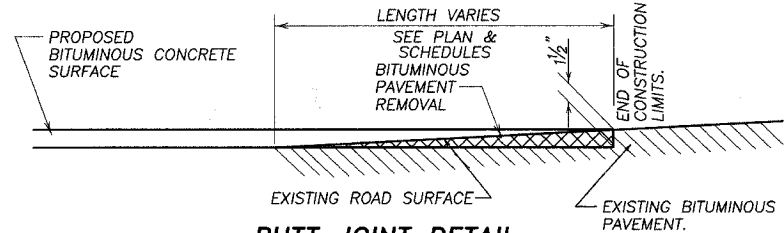
INLET SPECIAL NO. 2



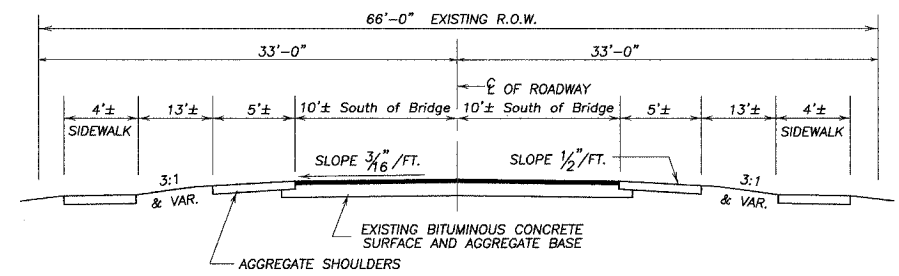
EXISTING TYPICAL SECTION
(STA. 8+40 TO STA. 24+00)



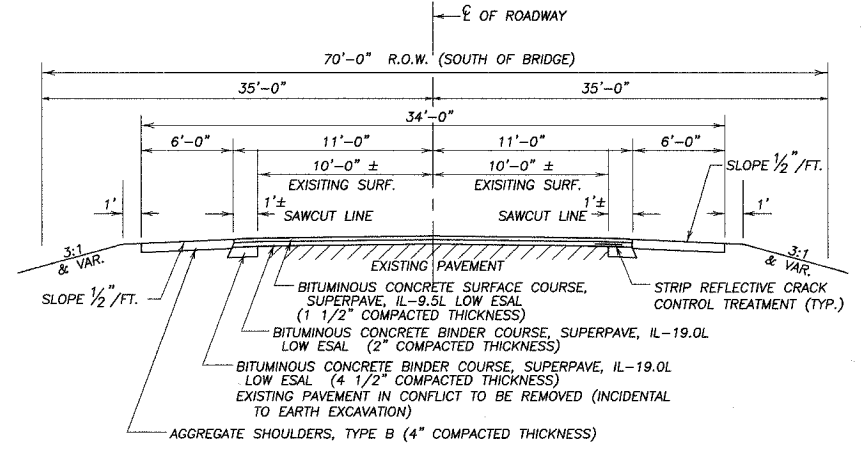
PROPOSED TYPICAL SECTION
(STA. 13+00 TO STA. 24+00)



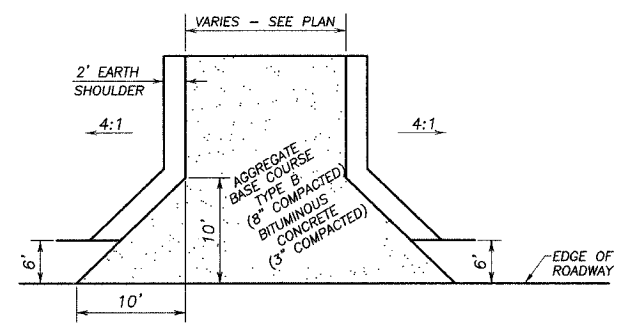
BUTT JOINT DETAIL
GRINDING OF BITUMINOUS PAVEMENT FOR BUTT JOINT.



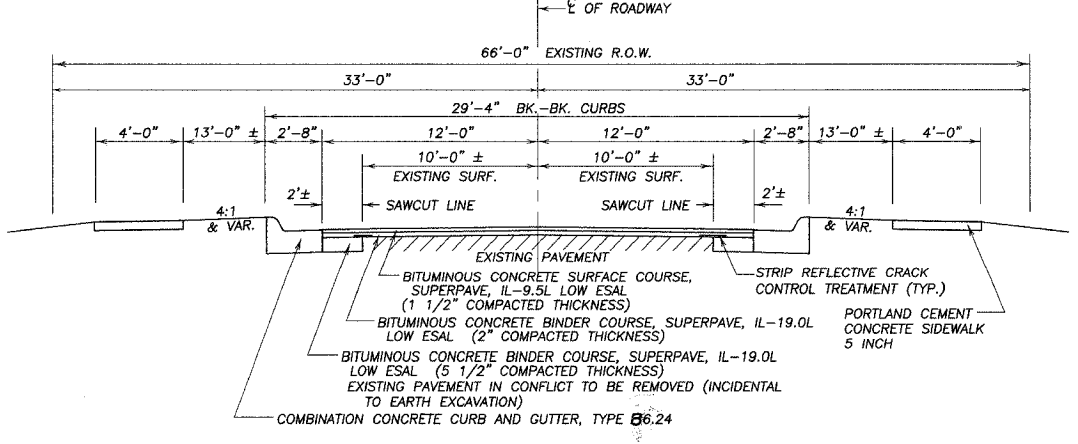
EXISTING TYPICAL SECTION
(STA. 3+80 TO STA. 8+40)



PROPOSED TYPICAL SECTION
(STA. 8+40 TO STA. 13+00)



PRIVATE ENTRANCE DETAIL
P.E.R. STA. 10+10 AND P.E.R. STA. 11+50



PROPOSED TYPICAL SECTION
(STA. 3+80 TO STA. 8+40)

TYPICAL SECTIONS & DETAILS
SECTION 99-00103-01-BR
KIRKLAND RD. (CO. HIGHWAY 29)
DEKALB COUNTY