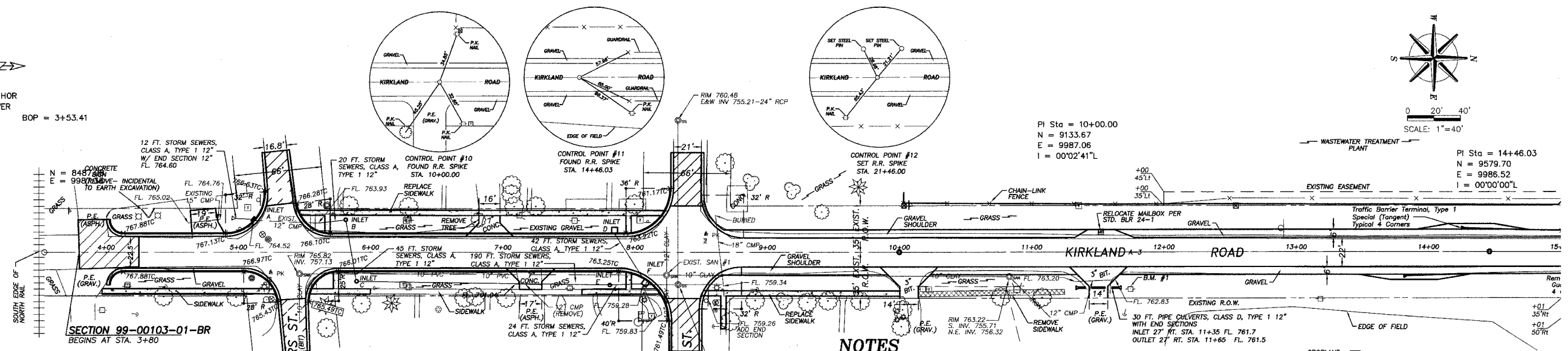
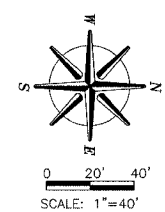


SCALES:
1" = 40' HOR
1" = 5' VER

BOP = 3+53.41



SECTION 99-00103-01-BR
BEGINS AT STA. 3+80

PROPOSED STORM SEWER INLET SCHEDULE

INLET TYPE	FL.	RIM	E.O.P.	NOTES
A INLETS, TYPE A, TYPE 10 FRAME & GRATE	764.52	766.59	"1"	
B INLETS, TYPE A, TYPE 8 GRATE	761.44	764.50		
C INLETS, TYPE A, TYPE 8 GRATE	760.40	763.30		
D INLETS, SPECIAL NO. 2	759.62	762.90		
E INLETS, TYPE A, TYPE 8 GRATE	759.40	761.17		
F INLETS, SPECIAL, NO. 2	759.28	762.35	"1"	

Notes: "1" Construct over existing pipe end

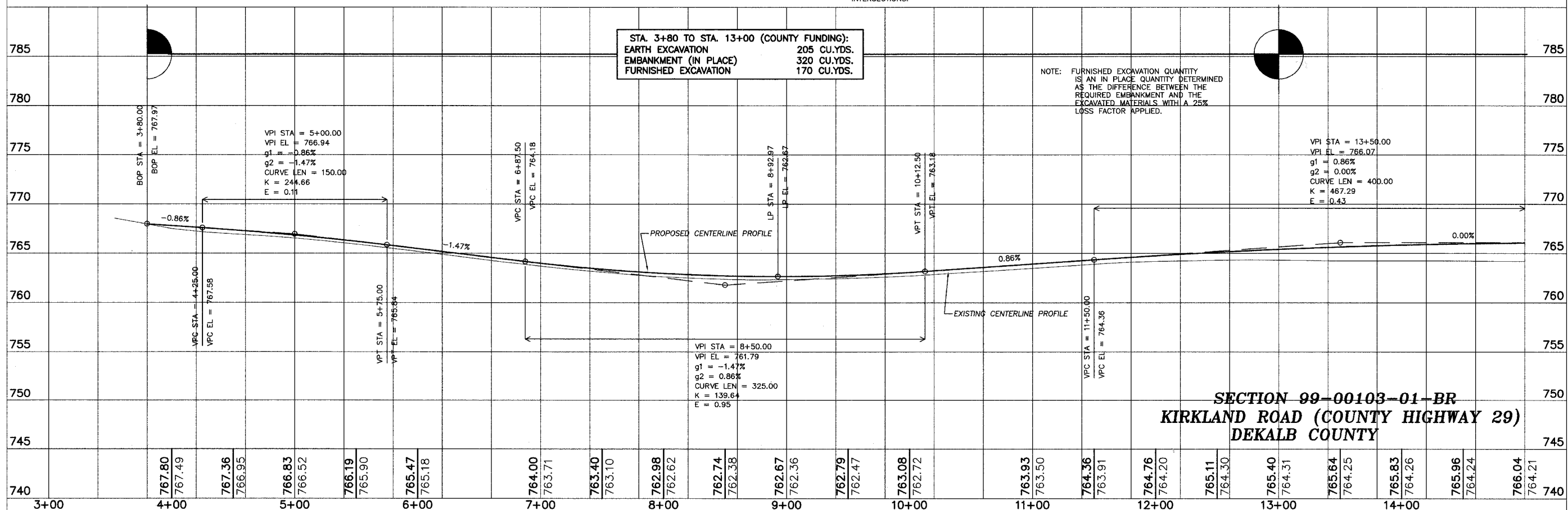
NOTES

ALL STUMP, TREE REMOVAL (< BIN DIA), CULVERTS AND BRUSH REMOVAL ARE CONSIDERED INCIDENTAL TO EARTH EXCAVATION.
ALL FENCES DISTURBED BY CONSTRUCTION ACTIVITIES SHALL BE RELOCATED AND RESTORED BY THE CONTRACTOR AS DIRECTED BY THE ENGINEER.
(SEE SPECIAL PROVISIONS - COST CONSIDERED INCIDENTAL TO THE CONTRACT)
REQUIRED PAVEMENT SAWCUTS SHALL BE CONSIDERED INCIDENTAL TO EARTH EXCAVATION.
COMBINATION CURB AND GUTTER, TYPE B6.24 TO BE DEPRESSED THROUGH ALL ENTRANCES. FULL HEIGHT CURB TO BE TRANSDUCED TO A DEPRESSED CURB SECTION IN THE LAST 15 FEET OF ALL INTERSECTION RETURNS.
ACCESSIBLE RAMPS IN ACCORDANCE WITH STD. 424001-03 TYPE A SHALL BE PROVIDED ON PROPOSED SIDEWALKS AT ALL INTERSECTIONS.

UTILITIES

ELECTRIC: COMMONWEALTH EDISON COMPANY TELEPHONE: VERIZON NORTH
(815) 756-9541 (815) 564-6171
DEKALB, ILLINOIS BELVIDERE, ILLINOIS
GAS: NICOR VILLAGE OF KIRKLAND
(630) 983-8676 (815) 222-6170
NAPERVILLE, ILLINOIS

THE LOCATIONS OF UTILITY FACILITIES AS SHOWN ON THESE PLANS ARE AN ESTIMATE AND NOT INTENDED AS FIELD LOCATIONS FOR CONSTRUCTION. THE CONTRACTOR IS RESPONSIBLE FOR CONTACTING ALL UTILITIES PRIOR TO CONSTRUCTION AND CALLING J.U.L.I.E. AT 800-892-0123 FOR CONFIRMATION OF EXISTING UTILITY LOCATIONS.



**SECTION 99-00103-01-BR
KIRKLAND ROAD (COUNTY HIGHWAY 29)
DEKALB COUNTY**

WENDLER ENGINEERING SERVICES, INC.
Structural & Civil Engineers—Land Surveying—Environmental Services
Illinois Professional Design Firm No. 184-000848



1968 - 2004
AFTER
36
YEARS
WE'RE STILL
"Turning Ideas... Into Reality!"