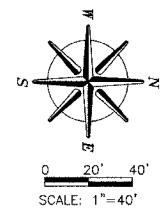
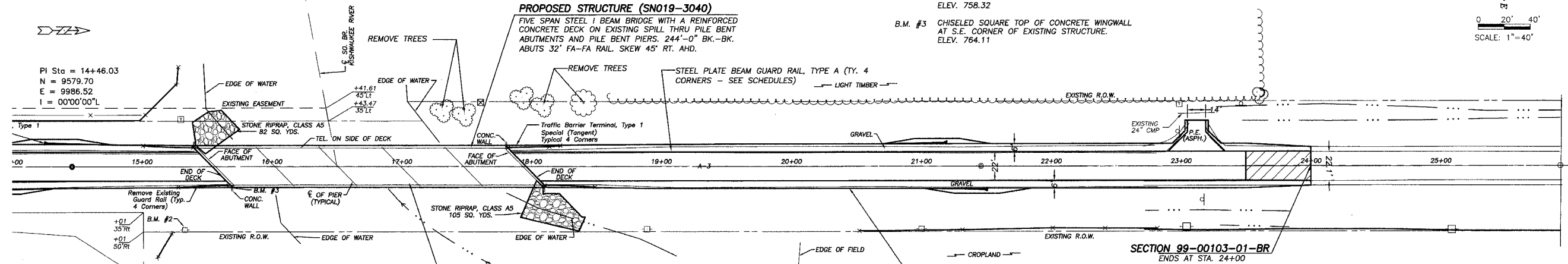


6 of 26
 SHEET NUMBER
 DRAWING DATE
 10/30/2004
 PROJECT
 REVISION
 698 TIMBER CREEK ROAD - P.O. BOX 486 - DIXON, IL 61021 - 815-288-2261
 28 E. MARION - SUITE 3 - PRINCETON, IL 61356 - 815-879-4731
 1778 WEST STATE ST. - STAMFORD, IL 60178 - 815-895-9008
 804 FREEMONT RD. - STERLING, IL 61081 - (815) 626-4428
 E-MAIL: info@wendler.com



BENCHMARKS

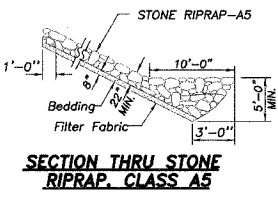
- B.M. #1 R.R. SPIKE FOUND IN 3RD P.P. SOUTH OF EXISTING STRUCTURE E. SIDE OF RD. ELEV. 764.87
- B.M. #2 R.R. SPIKE FOUND IN 1ST P.P. SOUTH OF EXISTING STRUCTURE E. SIDE OF RD. ELEV. 758.32
- B.M. #3 CHISELED SQUARE TOP OF CONCRETE WINGWALL AT S.E. CORNER OF EXISTING STRUCTURE. ELEV. 764.11



NOTES

ALL STUMP, TREE REMOVAL (< 6IN DIA.), CULVERTS AND BRUSH REMOVAL ARE CONSIDERED INCIDENTAL TO EARTH EXCAVATION.
 ALL FENCES DISTURBED BY CONSTRUCTION ACTIVITIES SHALL BE RELOCATED AND RESTORED BY THE CONTRACTOR AS DIRECTED BY THE ENGINEER.
 (SEE SPECIAL PROVISIONS - COST CONSIDERED INCIDENTAL TO THE CONTRACT)
 REQUIRED PAVEMENT SAWCUTS SHALL BE CONSIDERED INCIDENTAL TO EARTH EXCAVATION.

SCALES:
 1" = 40' HOR
 1" = 5' VER

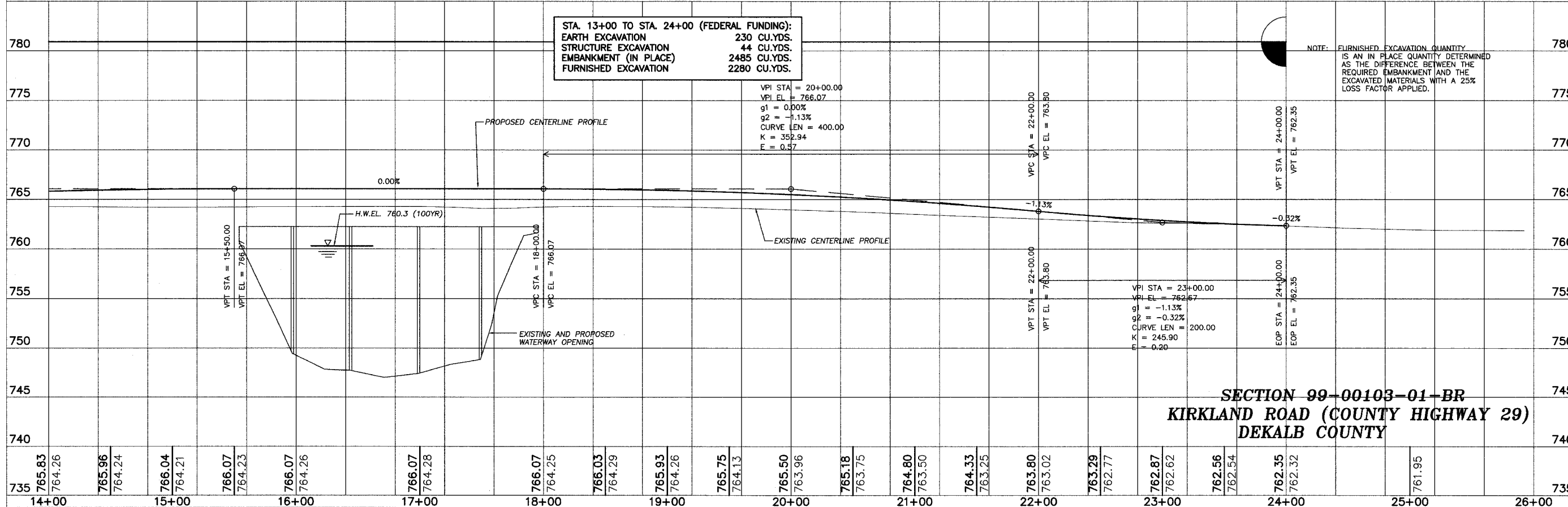


UTILITIES

ELECTRIC: COMMONWEALTH EDISON COMPANY TELEPHONE: VERIZON NORTH
 (815) 756-9541 (815) 564-6171
 DEKALB, ILLINOIS BELVIDERE, ILLINOIS

GAS: NICOR VILLAGE OF KIRKLAND
 (630) 983-8676 (815) 222-6170
 NAPERVILLE, ILLINOIS

THE LOCATIONS OF UTILITY FACILITIES AS SHOWN ON THESE PLANS ARE AN ESTIMATE AND NOT INTENDED AS FIELD LOCATIONS FOR CONSTRUCTION. THE CONTRACTOR IS RESPONSIBLE FOR CONTACTING ALL UTILITIES PRIOR TO CONSTRUCTION AND CALLING J.U.L.I.E. AT 800-892-0123 FOR CONFIRMATION OF EXISTING UTILITY LOCATIONS.



NOTE: FURNISHED EXCAVATION QUANTITY IS AN IN PLACE QUANTITY DETERMINED AS THE DIFFERENCE BETWEEN THE REQUIRED EMBANKMENT AND THE EXCAVATED MATERIALS WITH A 25% LOSS FACTOR APPLIED.

WENDLER ENGINEERING SERVICES, INC.
 Structural & Civil Engineers-Land Surveying-Environmental Services
 Illinois Professional Design Firm No. 184-000848

