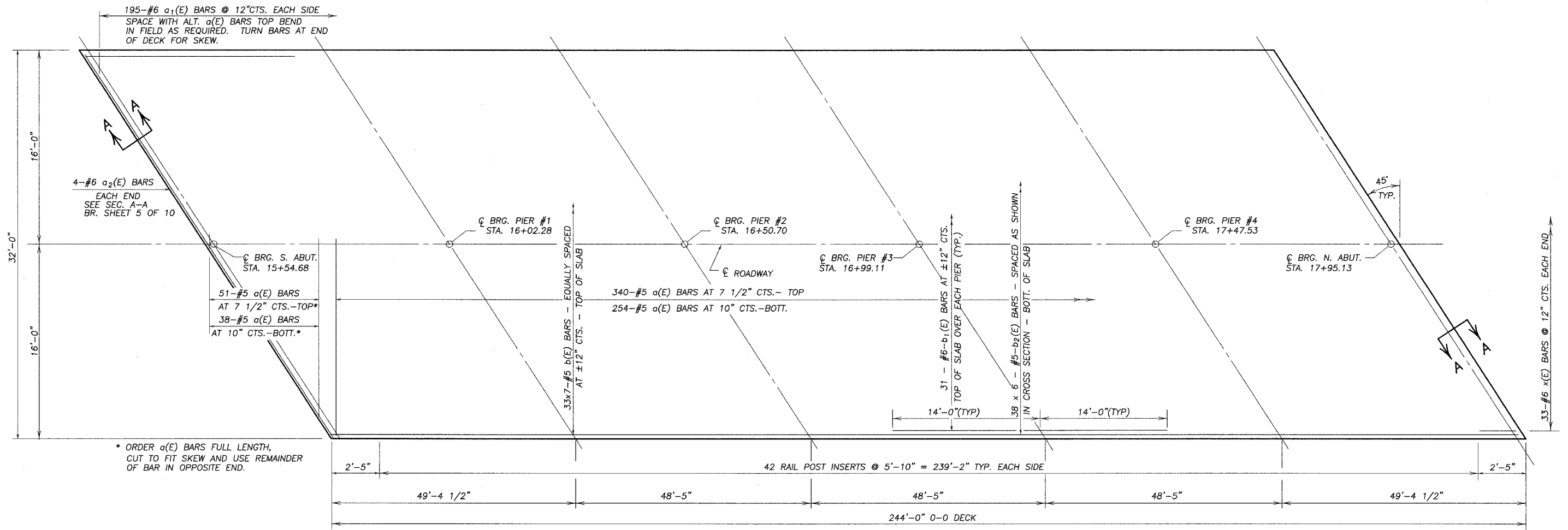


FAS ROUTE NO.	SEC	COUNTY	TOTAL SHEETS	SHEET NO.
-	*	DEKALB	26	19

ILLINOIS PROJECT BRS-
 * 99-00103-01-BR
 BRIDGE SHEET 4 OF 10



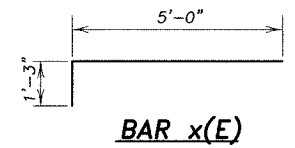
* ORDER a(E) BARS FULL LENGTH, CUT TO FIT SKEW AND USE REMAINDER OF BAR IN OPPOSITE END.

PLAN

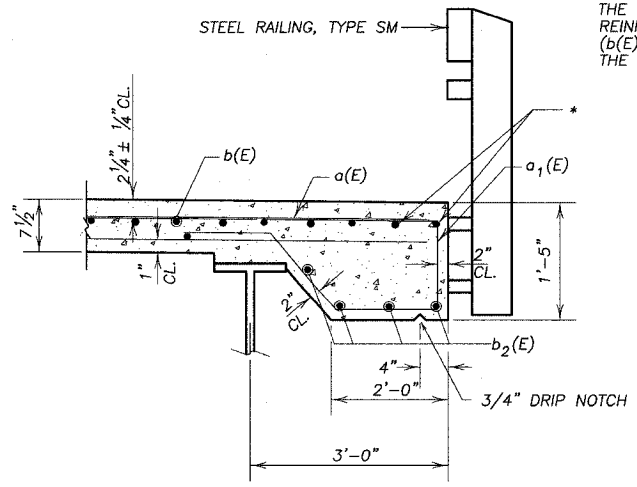
* NOTE: REINFORCEMENT BARS IN THE TOP OF THE DECK MAY BE PLACED WITH A 1 1/2" MINIMUM CLEARANCE IN THE AREA OF THE RAIL POST ANCHOR DEVICES. THE STUDS OF THE ANCHOR DEVICES SHALL BE POSITIONED BELOW THE TOP REINFORCEMENT BARS AND THE OUTERMOST LONGITUDINAL REINFORCEMENT BARS (b(E) AND b1(E) BARS) SHALL BE PLACED DIRECTLY ABOVE THE STUDS OF THE RAIL POST ANCHOR DEVICE.

MIN. LAP

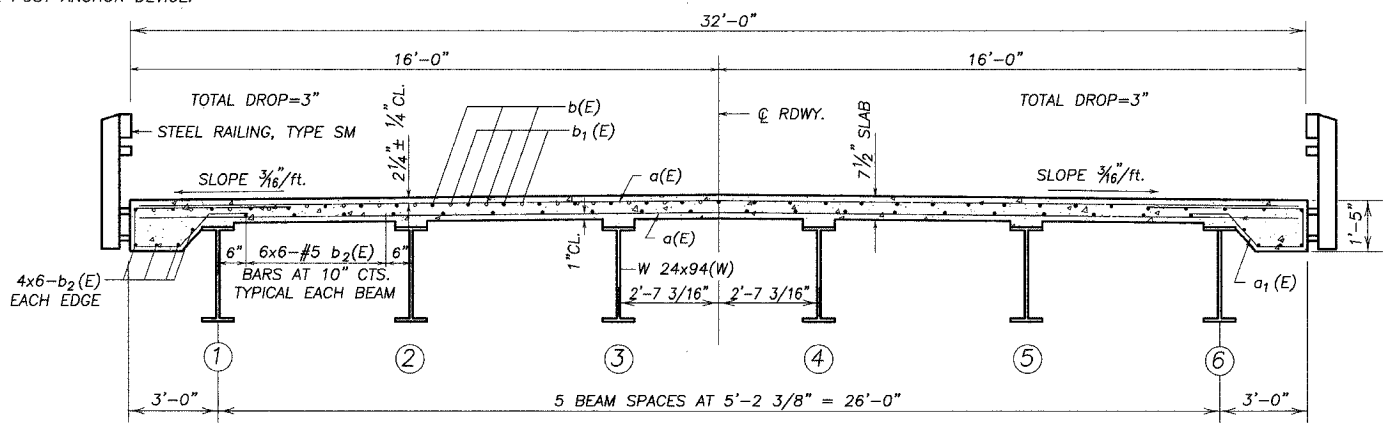
#5	2'-5"
#6	2'-10"



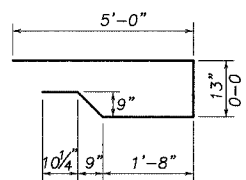
BAR x(E)



SECTION THRU EDGE OF SLAB



CROSS SECTION (LOOKING NORTH)



BAR a1(E)

SUPERSTRUCTURE
 SECTION 99-00103-01-BR
 KIRKLAND ROAD
 DEKALB COUNTY
 S.N. 019-3040