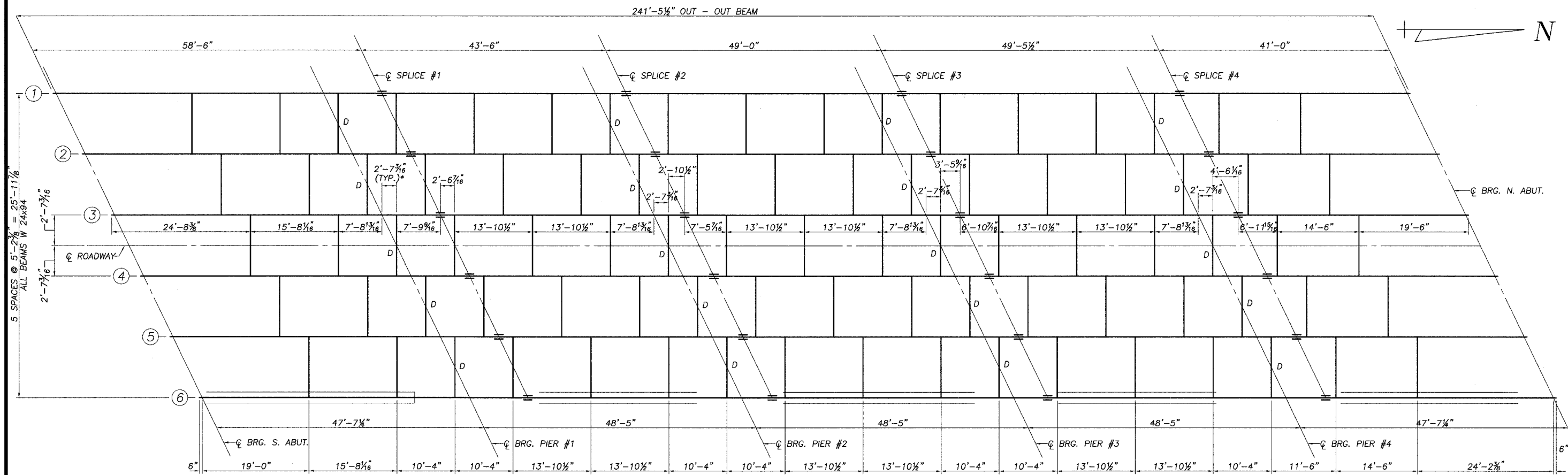


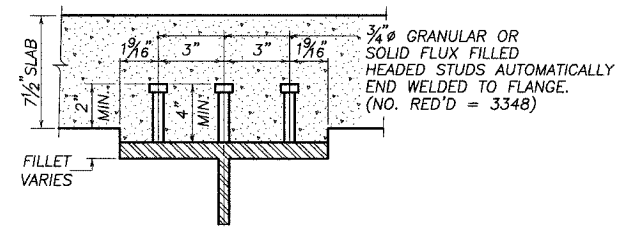
FAS ROUTE NO.	SEC	COUNTY	TOTAL SHEETS	SHEET NO
-	*	DEKALB	26	21

ILLINOIS PROJECT BRS-
* 99-00103-01-BR
BRIDGE SHEET 6 OF 10

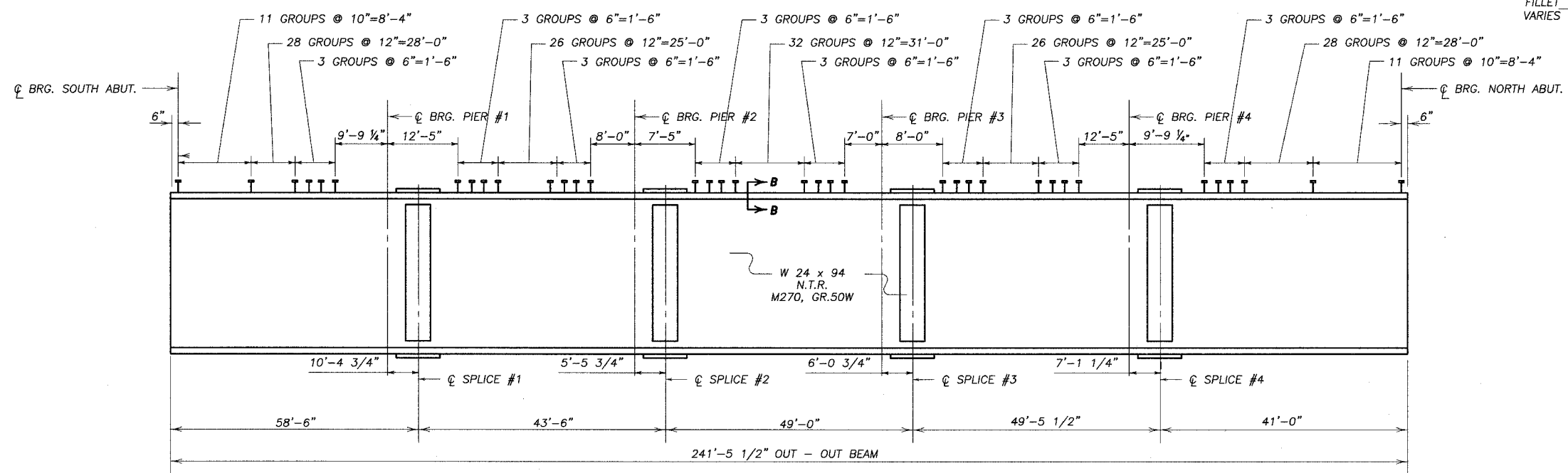


STEEL FRAMING PLAN

* DIMENSION TYPICAL FOR DIAPHRAGM "D"



SECTION B-B



BEAM ELEVATION

NOTCH TOUGHNESS REQUIREMENT = N.T.R.

FURNING & ERECTING STRUCTURAL STEEL	
M270 GRADE 50W =	162,102 lbs. *
* INCLUDES BEAMS, DIAPHRAGMS, & SPLICES	
M270 GRADE 36 =	4211 lbs. **
** INCLUDES ANCHOR BOLTS, LEAD PLATES, ANGLES, NUTS, PLATES AND WASHERS	

STRUCTURAL STEEL SECTION 99-00103-01-BR
KIRKLAND ROAD
DEKALB COUNTY
S.N. 019-3040