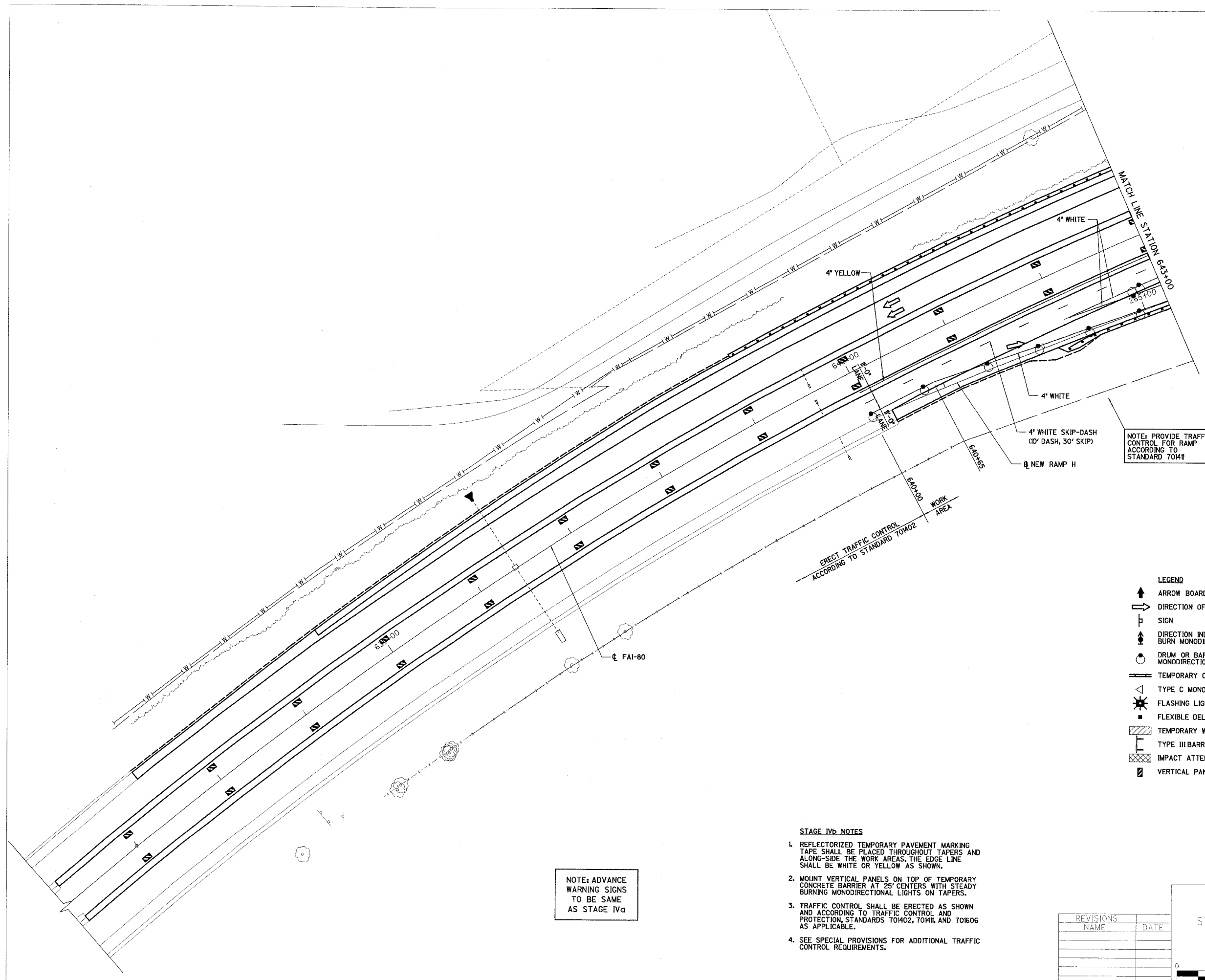


RTE.	SECTION	COUNTY	TOTAL SHEETS	SHEET NO.
FAI 80	(50-2)HBR	LA SALLE	460	75
STA. 631+20	TO STA. 643+00			
FED. ROAD DIST. NO.	ILLINOIS FED. AID PROJECT			

CONTRACT NO. 86603



NOTE: PROVIDE TRAFFIC CONTROL FOR RAMP ACCORDING TO STANDARD T0411

- LEGEND**
- ↑ ARROW BOARD
 - DIRECTION OF TRAFFIC
 - SIGN
 - ↑ DIRECTION INDICATOR BARRICADE WITH STEADY BURN MONODIRECTIONAL LIGHT
 - DRUM OR BARRICADE WITH STEADY BURN MONODIRECTIONAL LIGHT
 - ▬ TEMPORARY CONCRETE BARRIER
 - △ TYPE C MONODIRECTIONAL REFLECTOR
 - ★ FLASHING LIGHT
 - FLEXIBLE DELINEATOR
 - ▨ TEMPORARY WIDENING
 - ⊥ TYPE III BARRICADE
 - ▩ IMPACT ATTENUATORS
 - ▧ VERTICAL PANEL

- STAGE IVb NOTES**
1. REFLECTORIZED TEMPORARY PAVEMENT MARKING TAPE SHALL BE PLACED THROUGHOUT TAPERS AND ALONG-SIDE THE WORK AREAS. THE EDGE LINE SHALL BE WHITE OR YELLOW AS SHOWN.
 2. MOUNT VERTICAL PANELS ON TOP OF TEMPORARY CONCRETE BARRIER AT 25' CENTERS WITH STEADY BURNING MONODIRECTIONAL LIGHTS ON TAPERS.
 3. TRAFFIC CONTROL SHALL BE ERECTED AS SHOWN AND ACCORDING TO TRAFFIC CONTROL AND PROTECTION, STANDARDS T0402, T0411, AND T0606 AS APPLICABLE.
 4. SEE SPECIAL PROVISIONS FOR ADDITIONAL TRAFFIC CONTROL REQUIREMENTS.

NOTE: ADVANCE WARNING SIGNS TO BE SAME AS STAGE IVa

REVISIONS	DATE

ILLINOIS DEPARTMENT OF TRANSPORTATION

STAGE IVb CONSTRUCTION PLAN

F.A.I. 80 AT ILLINOIS ROUTE 351
STATION 631+20 TO STATION 643+00

DATE: 09/04
DRAWN BY: MES
CHECKED BY: MTD

SCALE IN FEET