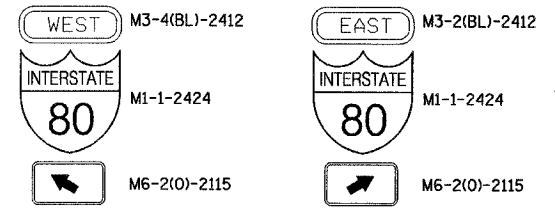
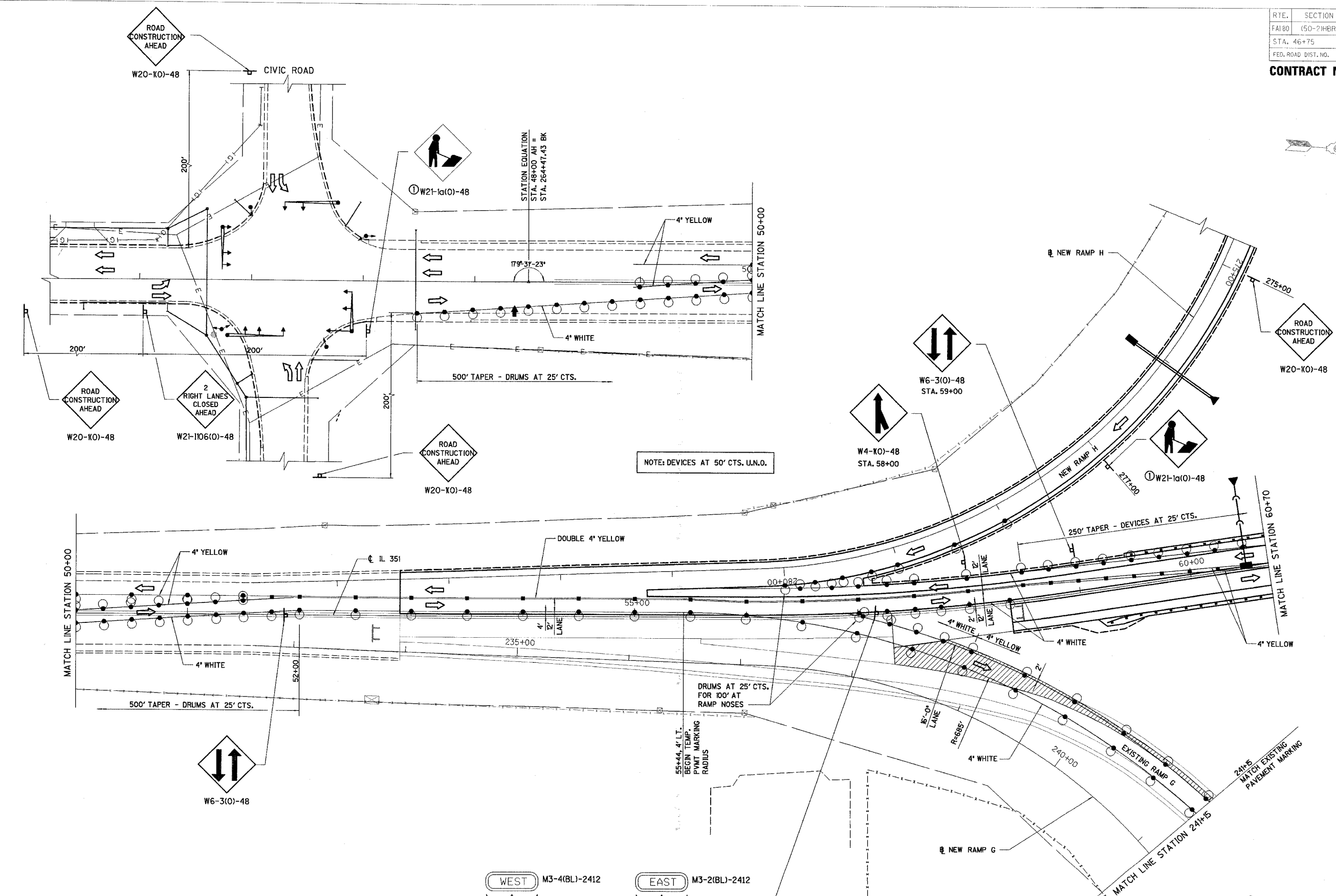


RTE.	SECTION	COUNTY	TOTAL SHEETS	SHEET NO.
FAI 80	(50-2)HBR	LA SALLE	460	81
STA. 46+75	TO STA. 60+70			
FED. ROAD DIST. NO.	ILLINOIS	FED. AID PROJECT		

CONTRACT NO. 86603



① ONLY WHEN WORKERS ARE PRESENT. DO NOT POST MOUNT.

ILLINOIS DEPARTMENT OF TRANSPORTATION
STAGE Va CONSTRUCTION PLAN
 F.A.I. 80 AT ILLINOIS ROUTE 351
 STATION 46+75 TO STATION 60+70

REVISIONS	NAME	DATE



DATE: 09/04
 DRAWN BY: MES/DWH
 CHECKED BY: MTD