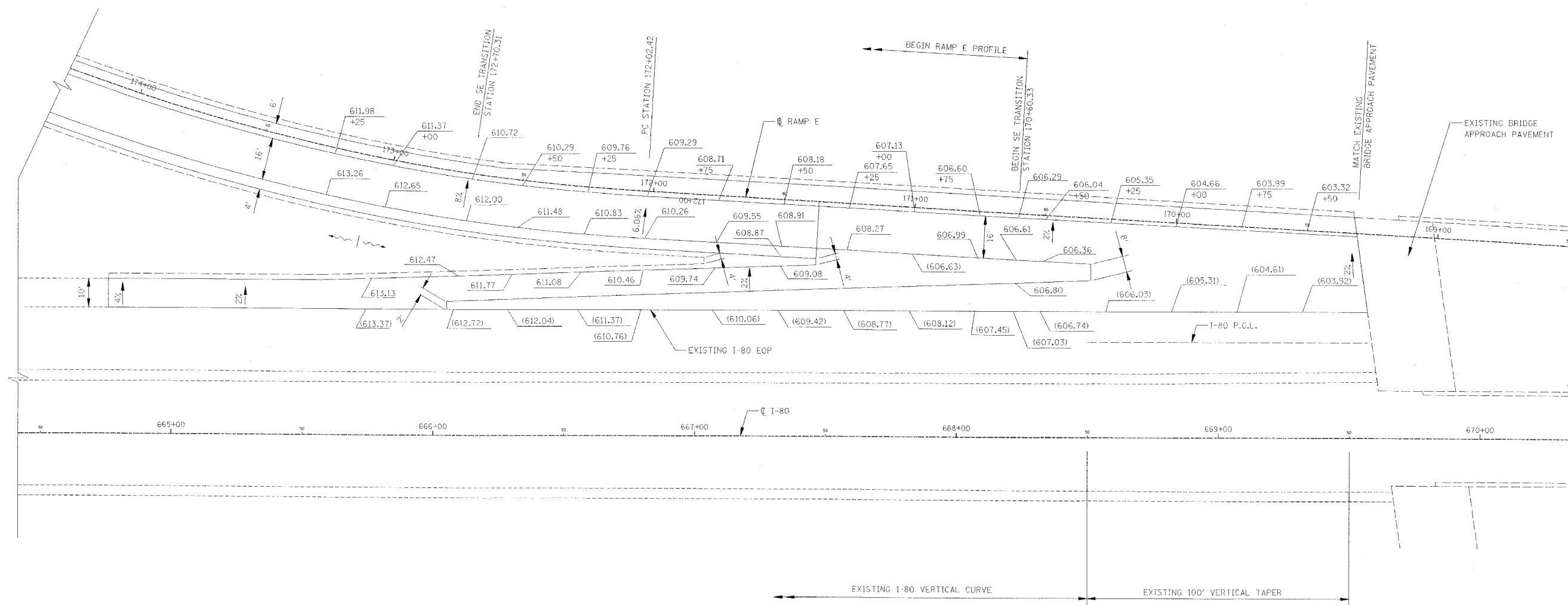


RTE.	SECTION	COUNTY	TOTAL SHEETS	SHEET NO.
FA180	(50-2) HBR	LA SALLE	460	91
STA.	TO STA.			
FED. ROAD DIST. NO.	ILLINOIS	FED. AID PROJECT		

CONTRACT NO. 86603



LEGEND

(XXX.XXX) EXISTING ELEVATION
 XXX.XXX PROPOSED ELEVATION

RAMP TERMINAL ELEVATIONS

NOTES

1. FOR ADDITIONAL RAMP DETAILS, SEE ROADWAY PLAN SHEETS

REVISIONS	
NAME	DATE

ILLINOIS DEPARTMENT OF TRANSPORTATION
RAMP TERMINAL ELEVATIONS
 F.A.I. 80 AT ILLINOIS ROUTE 351
 RAMP E

0 20 40
 SCALE IN FEET

DATE: 09/04
 DRAWN BY: JDK
 CHECKED BY: MTD