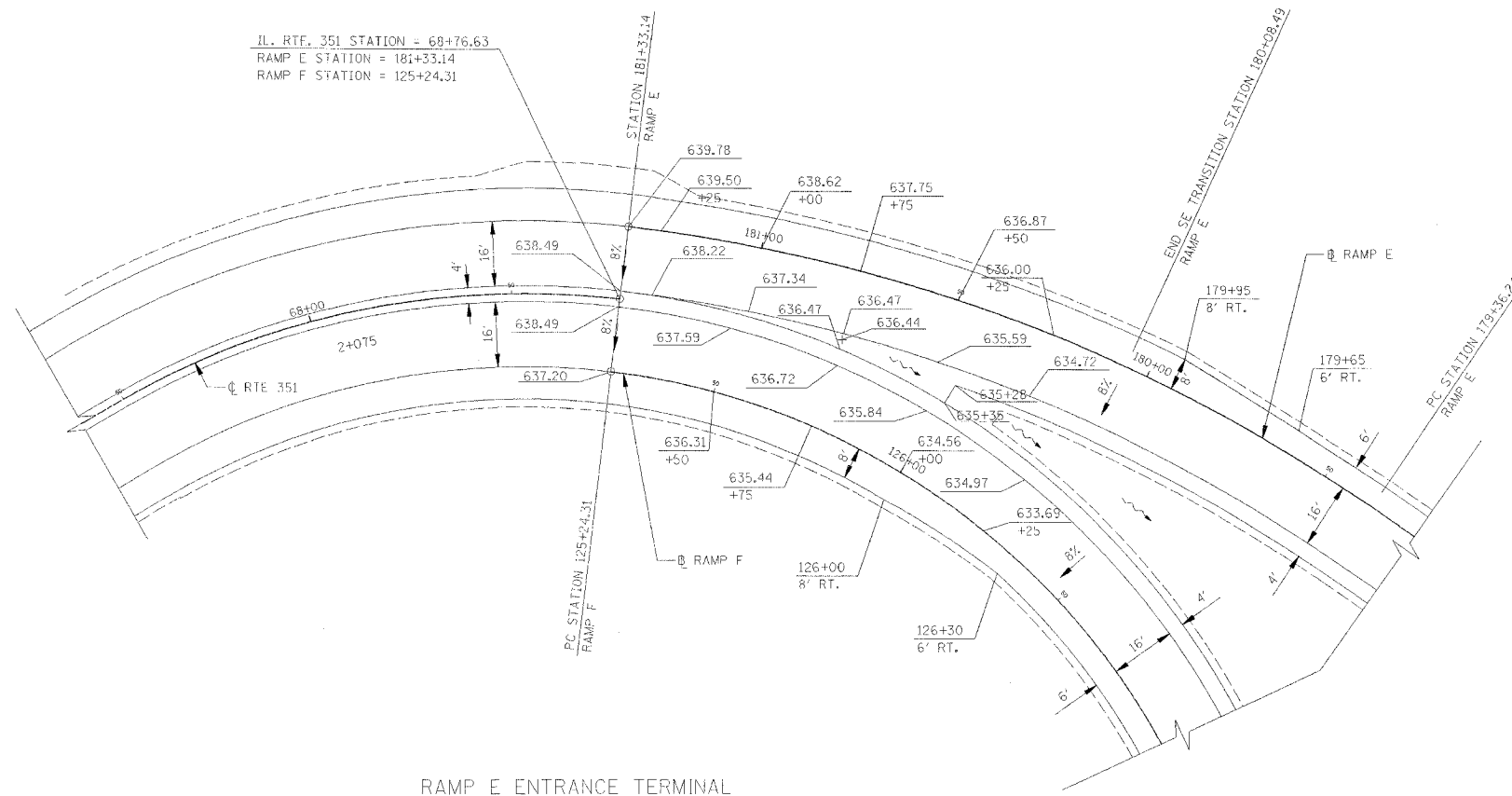


RTE.	SECTION	COUNTY	TOTAL SHEETS	SHEET NO.
FA180	(50-2)HBR	LA SALLE	440	92
STA.	TO STA.			
FED. ROAD DIST. NO.	ILLINOIS	FED. AID PROJECT		

CONTRACT NO. 86603



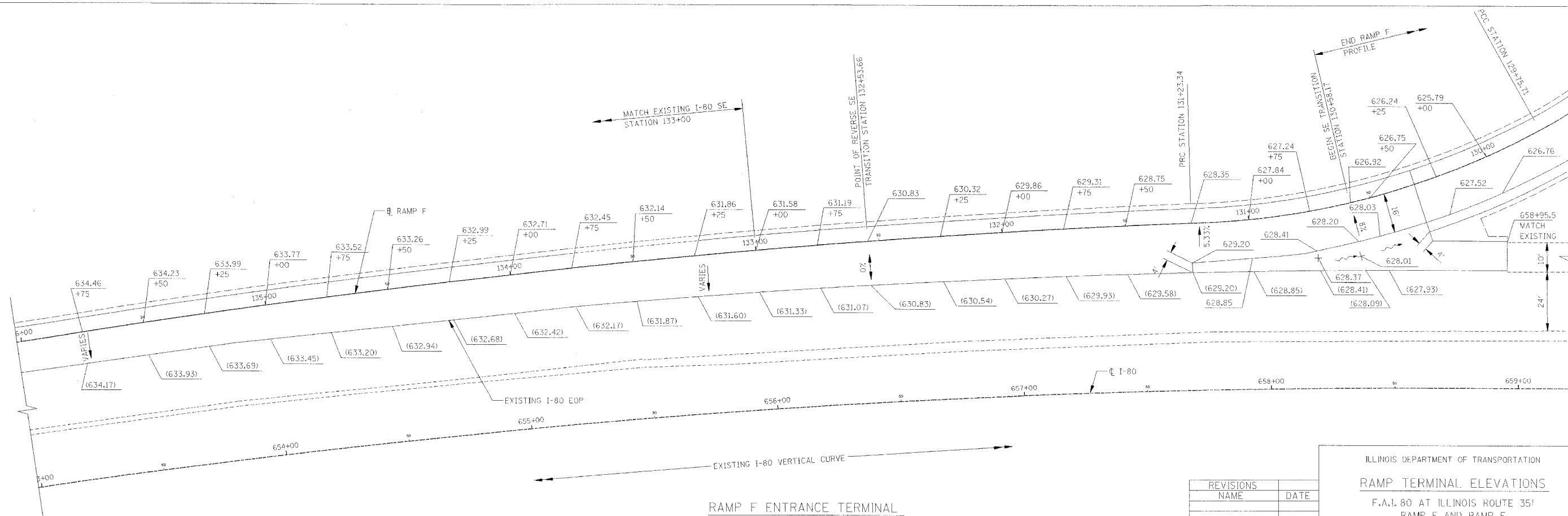
LEGEND

(XXX.XXX) EXISTING ELEVATION
 XXX.XXX PROPOSED ELEVATION

NOTES

FOR ADDITIONAL RAMP DETAILS, SEE ROADWAY PLAN SHEETS

RAMP E ENTRANCE TERMINAL
RAMP F EXIT TERMINAL



RAMP F ENTRANCE TERMINAL

REVISIONS	
NAME	DATE

ILLINOIS DEPARTMENT OF TRANSPORTATION
RAMP TERMINAL ELEVATIONS
 F.A.I. 80 AT ILLINOIS ROUTE 351
 RAMP E AND RAMP F

0 20 40
 SCALE IN FEET

DATE: 09/04
 DRAWN BY: JJK
 CHECKED BY: MTD