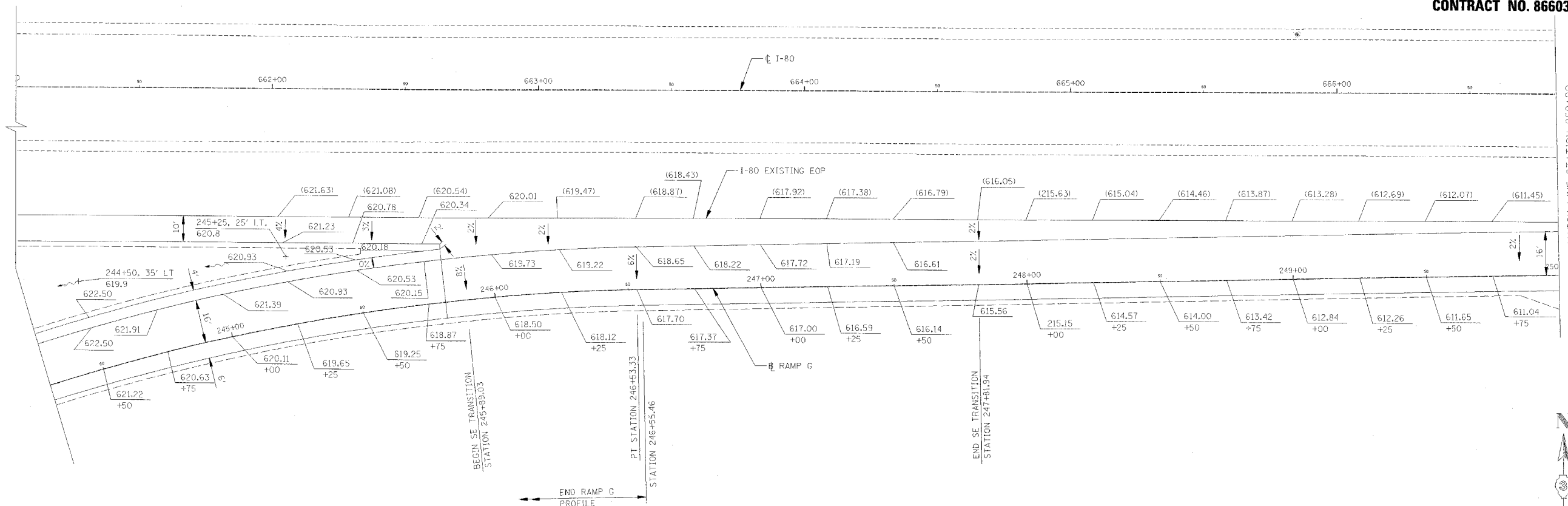


| | | | | |
|---------------------|-----------|------------------|--------------|-----------|
| RTE. | SECTION | COUNTY | TOTAL SHEETS | SHEET NO. |
| FA180 | (50-2)HBR | LA SALLE | 460 | 93 |
| STA. | TO STA. | | | |
| FED. ROAD DIST. NO. | ILLINOIS | FED. AID PROJECT | | |

CONTRACT NO. 86603

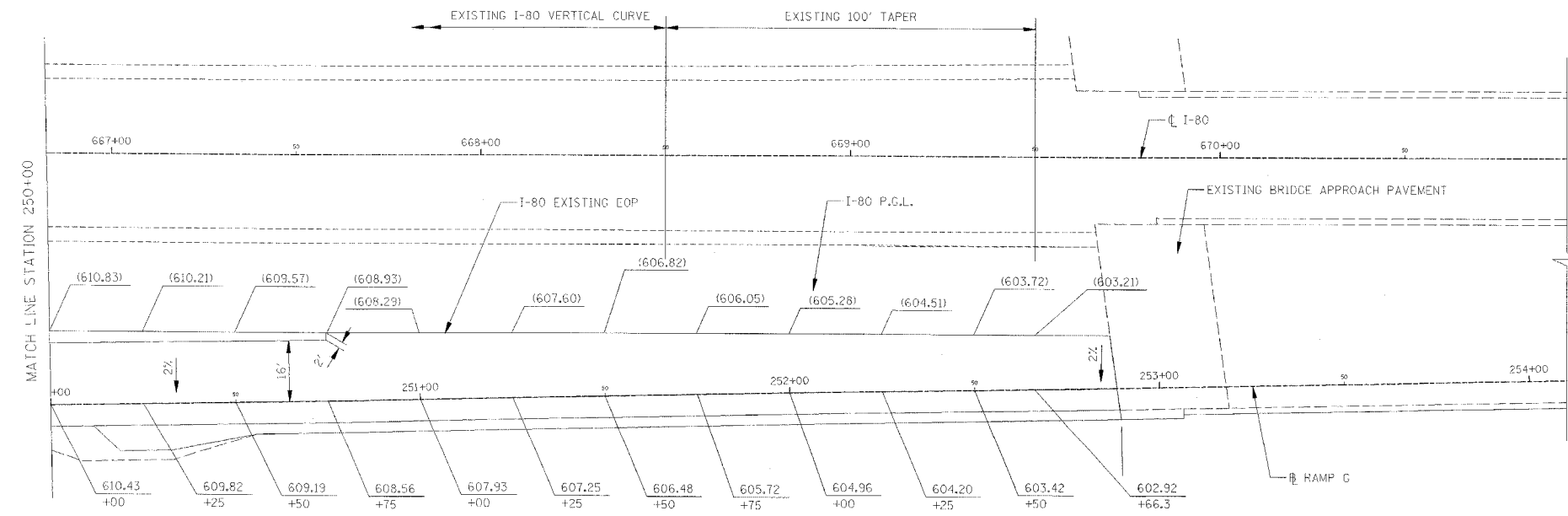


LEGEND

(XXX.XXX) EXISTING ELEVATION
 XXX.XXX PROPOSED ELEVATION

NOTES

FOR ADDITIONAL RAMP DETAILS, SEE ROADWAY PLAN SHEETS



| REVISIONS | NAME | DATE |
|-----------|------|------|
| | | |
| | | |
| | | |
| | | |

ILLINOIS DEPARTMENT OF TRANSPORTATION
RAMP TERMINAL ELEVATIONS
 F.A.I. 80 AT ILLINOIS ROUTE 351
 RAMP C

0 20 40
 SCALE IN FEET

DATE: 09/04
 DRAWN BY: JOK
 CHECKED BY: MTD