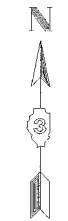
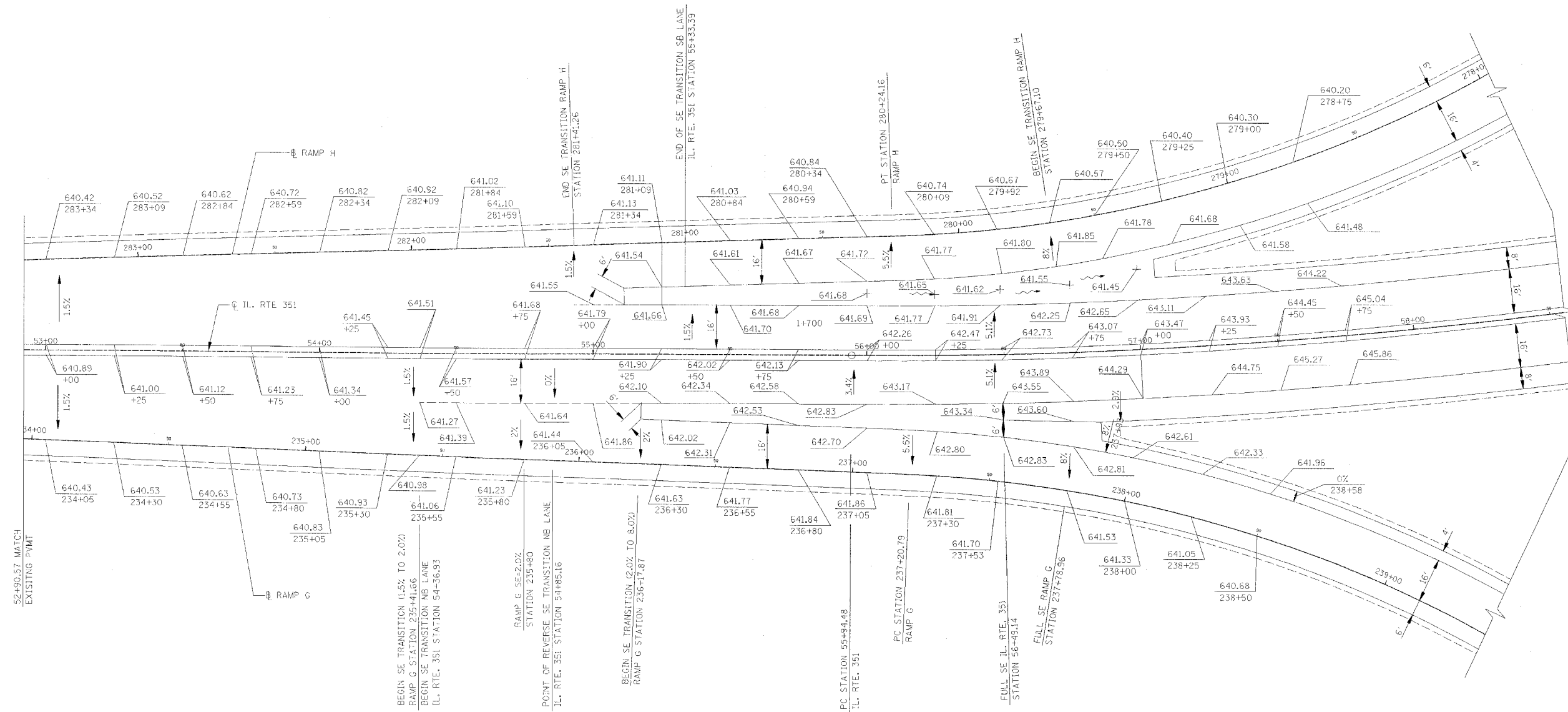


RTE.	SECTION	COUNTY	TOTAL SHEETS	SHEET NO.
FA180	(50-2)H3R	LA SALLE	460	94
STA.	TO STA.			
FED. ROAD DIST. NO.	ILLINOIS	FED. AID PROJECT		

CONTRACT NO. 86603



LEGEND

(XXX.XXX) EXISTING ELEVATION
 XXX.XXX PROPOSED ELEVATION

NOTES

FOR ADDITIONAL RAMP DETAILS, SEE ROADWAY PLAN SHEETS

REVISIONS	
NAME	DATE

ILLINOIS DEPARTMENT OF TRANSPORTATION

RAMP TERMINAL ELEVATIONS

F.A.I. 80 AT ILLINOIS ROUTE 351
 RAMP G AND RAMP H

0 20 40
 SCALE IN FEET

DATE: 09/04
 DRAWN BY: JOK
 CHECKED BY: MTD