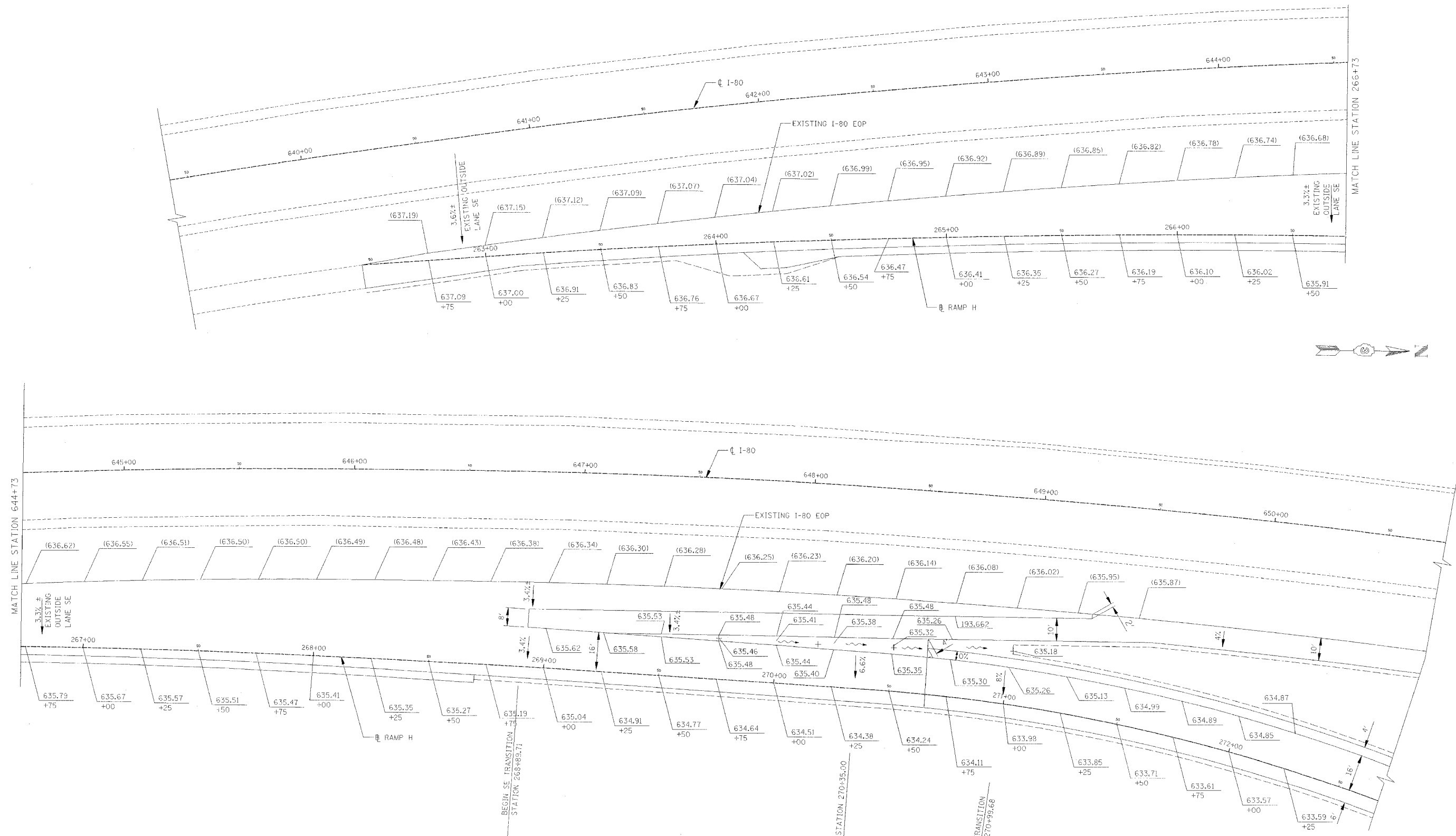


RTE:	SECTION	COUNTY	TOTAL SHEETS	SHEET NO.
FA180	(50-2)HR	LA SALLE	40	95
STA.	TO STA.			
FED. ROAD DIST. NO.	ILLINOIS	FED. AID PROJECT		

**CONTRACT NO. 86603**



**LEGEND**  
 OXXX.XXX) EXISTING ELEVATION  
 XXX.XXX PROPOSED ELEVATION  
**NOTES**  
 FOR ADDITIONAL RAMP DETAILS, SEE ROADWAY PLAN SHEETS

REVISIONS	NAME	DATE

ILLINOIS DEPARTMENT OF TRANSPORTATION  
**RAMP TERMINAL ELEVATIONS**  
 F.A.I. 80 AT ILLINOIS ROUTE 351  
 RAMP H

0 20 40  
 SCALE IN FEET

DATE: 09/04  
 DRAWN BY: JDC  
 CHECKED BY: MTD