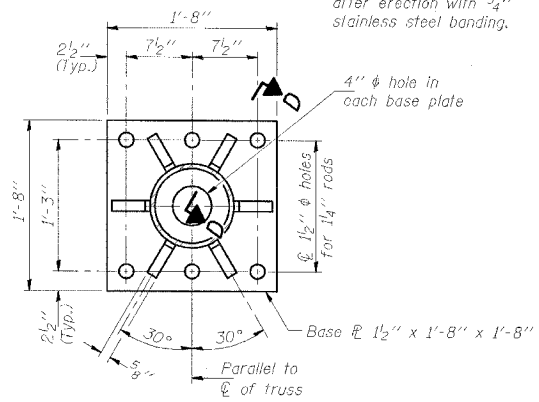
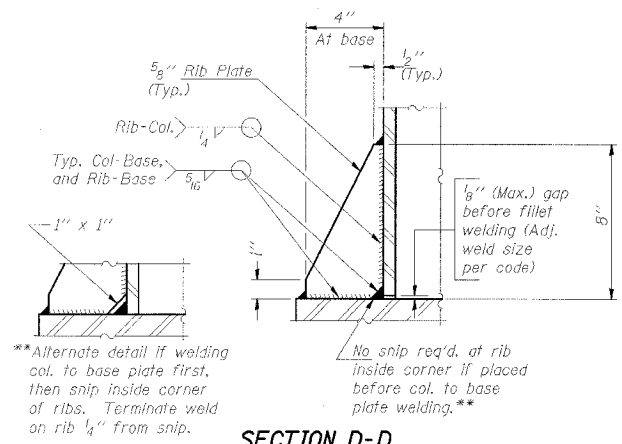


**DETAIL B**

Ribs shall be cut to fit slope of pipe.  
 Stainless Steel Standard Grade Wire Cloth, 3" wide, 1/4" maximum opening with a minimum wire diameter of AWG. No. 16 with a minimum 2" lap. Secure to base plate after erection with 3/4" stainless steel banding.

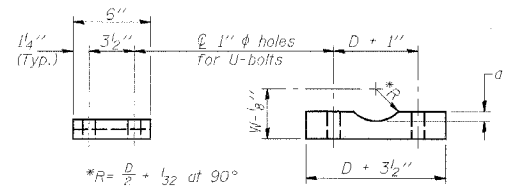


**SECTION B-B**



**SECTION D-D**

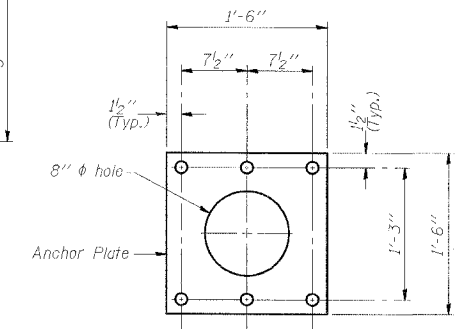
\*\*Alternate detail if welding col. to base plate first, then snip inside corner of ribs. Terminate weld on rib 1/4" from snip.



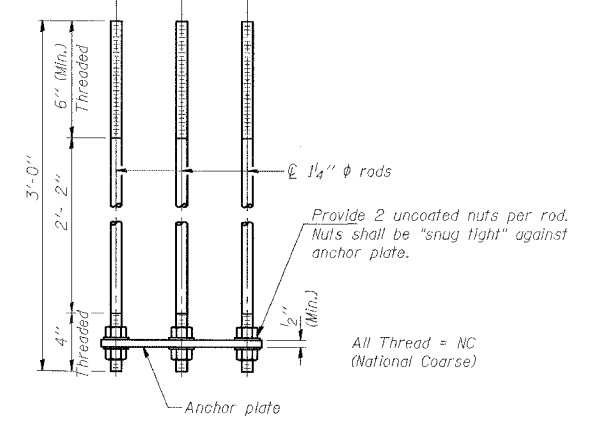
**SADDLE SHIM DETAIL**

ASTM B26 Alloy 356-F  
 or  
 ASTM B209 Alloy 6061-T651  
 (4 required per sign truss)

Truss Chord Nominal Dia.	a
5"	3/4"
5 1/2"	13/16"
6"	7/8"
6 1/2"	15/16"
7"	1"

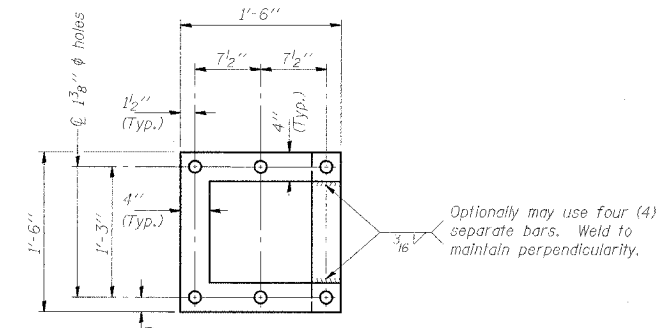


**Anchor Plate**



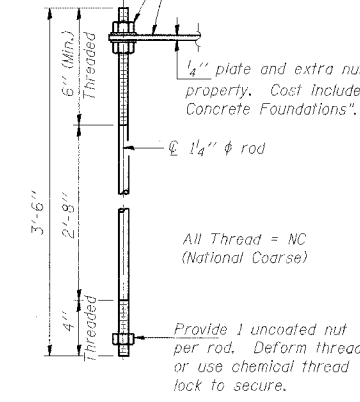
**ANCHOR ROD DETAIL**  
 Spread Footing Foundation

Anchor rods shall conform to AASHTO M314 Grade 35 or 50 and meet Charpy V-Notch (CVN) energy of 15 lb.-ft. at 40° F. Galvanize upper 12" per AASHTO M232. No welding shall be permitted on rods.



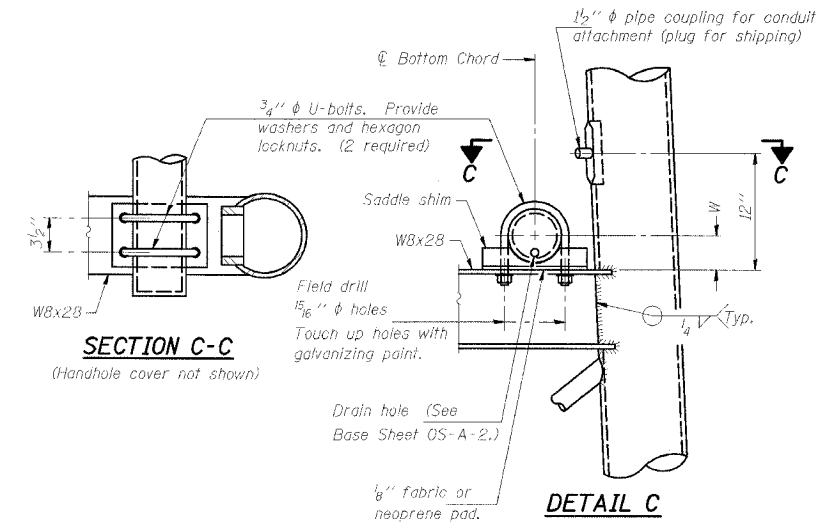
**POSITIONING PLATE(S)**

At each location, provide 1/4" thick positioning plate(s) and six (6) additional nuts to be used with leveling nuts to maintain anchor bolts position during concrete placement.



**ANCHOR ROD DETAIL**  
 Drilled Shaft Foundation

NUMBER	REVISION	DATE



**SECTION C-C**  
 (Handhole cover not shown)

**DETAIL C**

**10" PIPE SUPPORT FRAME DETAILS**

REVISIONS	NAME

ILLINOIS DEPARTMENT OF TRANSPORTATION  
**OVERHEAD SIGN STRUCTURES**  
**SUPPORT FRAME DETAILS**  
**ALUMINUM TRUSS**  
 3S0501080R076.4, STATION 643+14  
 3S0501080L077.0, STATION 674+70

SCALE: NONE  
 DATE: 09/04  
 DRAWN BY: MES  
 CHECKED BY: MTD/FMA