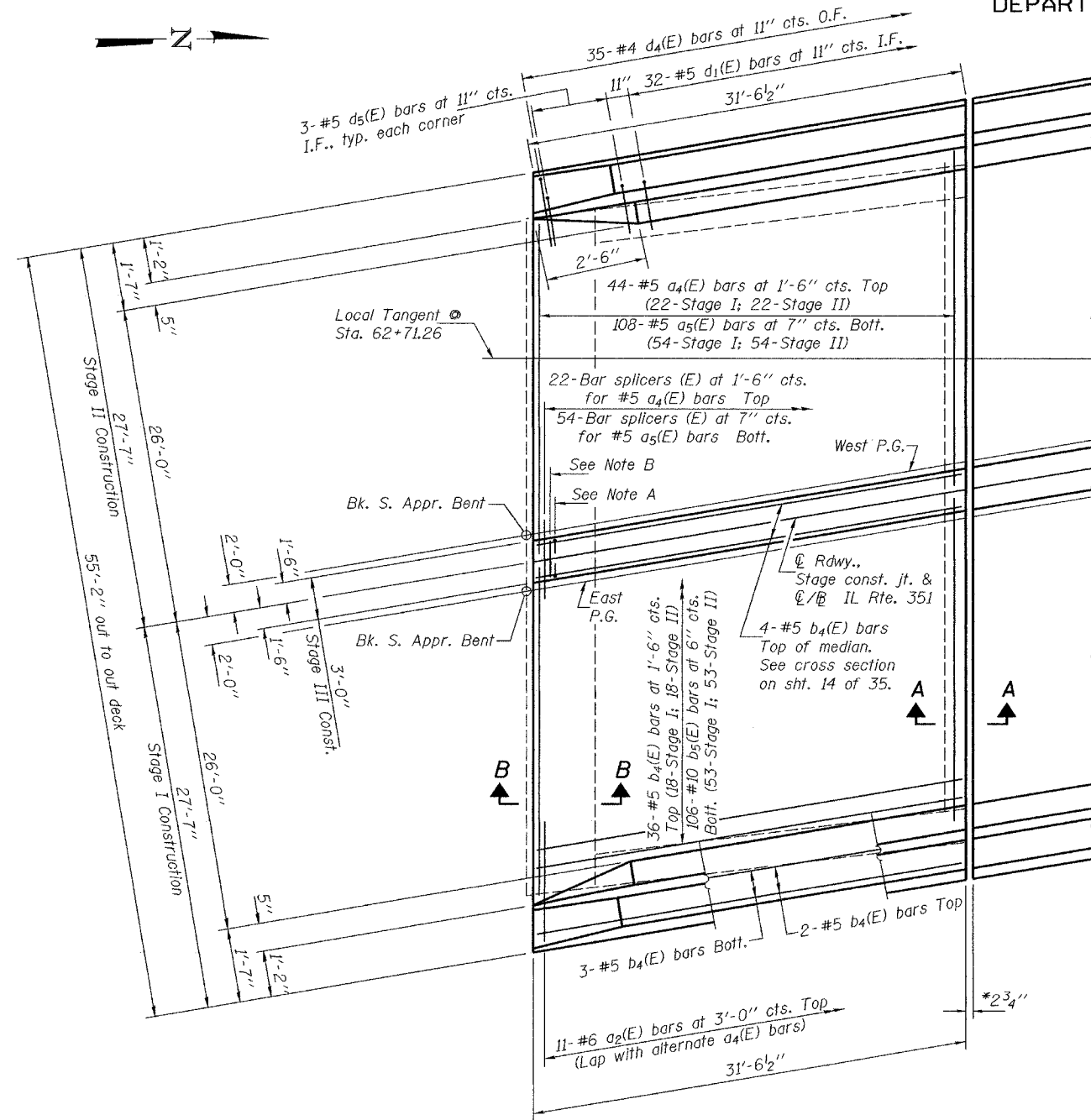


STATE OF ILLINOIS
DEPARTMENT OF TRANSPORTATION

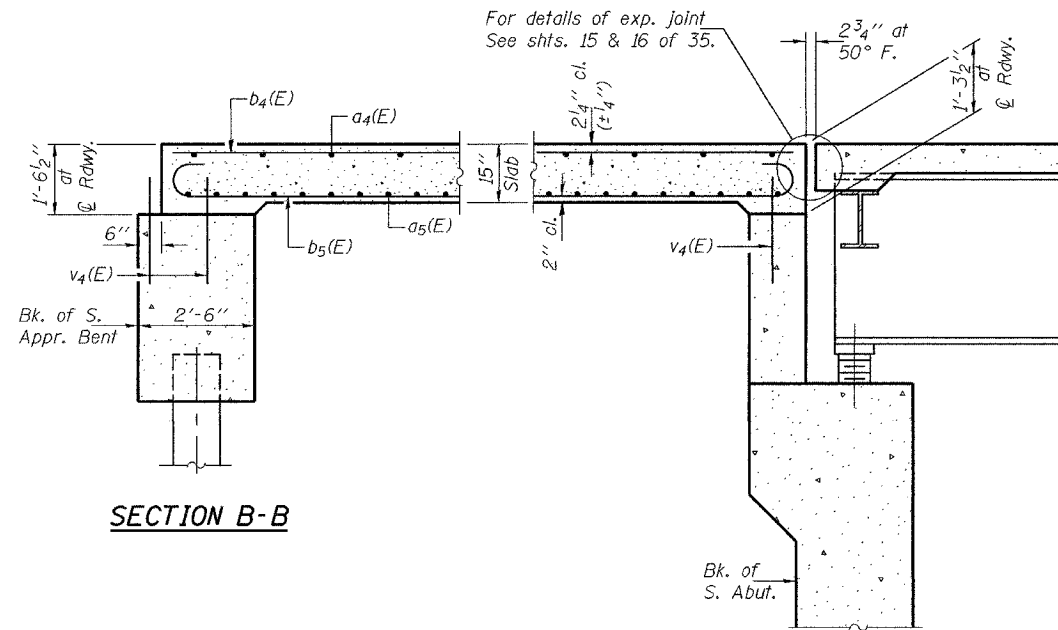
ROUTE NO.	SECTION	COUNTY	SHEETS	SHEET	SHEET NO. 12
F.A.I. 80	(50-2) HBR	LaSALLE		154	35 SHEETS
FED. ROAD DIST. NO. 7	ILLINOIS	FED. AID PROJECT			
Contract No. 86603					



PLAN

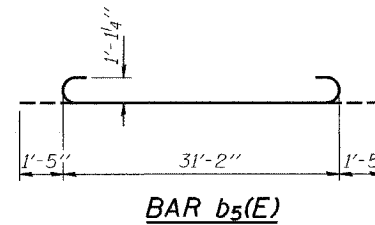
Note A: 33- #5 $c(E)$ bars at 12" cts. Each face of median.
33- 3/4" ϕ Expansion anchors (E) for #5 $c(E)$ bars.
Each face of median. See cross section on sheet 14 of 35.

Note B: 33- #5 $c_1(E)$ bars at 12" cts. in top of median.
See cross section on sheet 14 of 35.

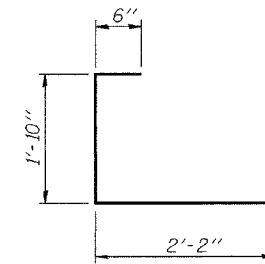


SECTION B-B

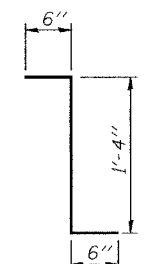
SECTION A-A



BAR $b_5(E)$



BAR $d_4(E)$



BAR $d_5(E)$

BILL OF MATERIAL

Bar	No.	Size	Length	Shape
$a_2(E)$	22	#6	4'-6"	—
$a_4(E)$	44	#5	27'-3"	—
$a_5(E)$	108	#5	26'-6"	—
$b_4(E)$	50	#5	31'-2"	—
$b_5(E)$	106	#10	34'-0"	U
$c(E)$	66	#5	1'-10"	┌
$c_1(E)$	33	#5	2'-5"	—
$d(E)$	70	#5	3'-0"	—
$d_1(E)$	64	#5	2'-5"	┌
$d_2(E)$	70	#4	3'-0"	—
$d_4(E)$	70	#4	4'-6"	┌
$d_5(E)$	6	#5	2'-4"	┌
$e_9(E)$	24	#4	15'-5"	—
$e_{10}(E)$	8	#5	16'-6"	—
$e_{11}(E)$	8	#8	17'-5"	—
Reinforcement Bars, Epoxy Coated			Lbs.	23230
Concrete Superstructure			Cu. Yd.	92.1

Reinforcement bars and expansion anchors designated (E) shall be epoxy coated.

Notes: For approach details and parapet reinforcement, see sheet 14 of 35.
Transverse dimensions are given at right angles to base line.
For details of bars $c(E)$, $d(E)$, $d_1(E)$ & $d_2(E)$, see sheet 10 of 35.
* Measured along local tangent at Sta. 62+71.26.

DESIGNED	RLM
CHECKED	CME
DRAWN	h.t. parsons
CHECKED	RLM/CME

Nov. 23, 2004
EXAMINED *Thomas J. Demagala*
ENGINEER OF BRIDGE DESIGN
PASSED *Ronald E. Anderson*
ENGINEER OF BRIDGES AND STRUCTURES

SOUTH APPROACH SLAB
F.A.I. RT. 80 - SEC. (50-2)HBR
LaSALLE COUNTY
STATION 62+39.22
STRUCTURE NO. 050-0230