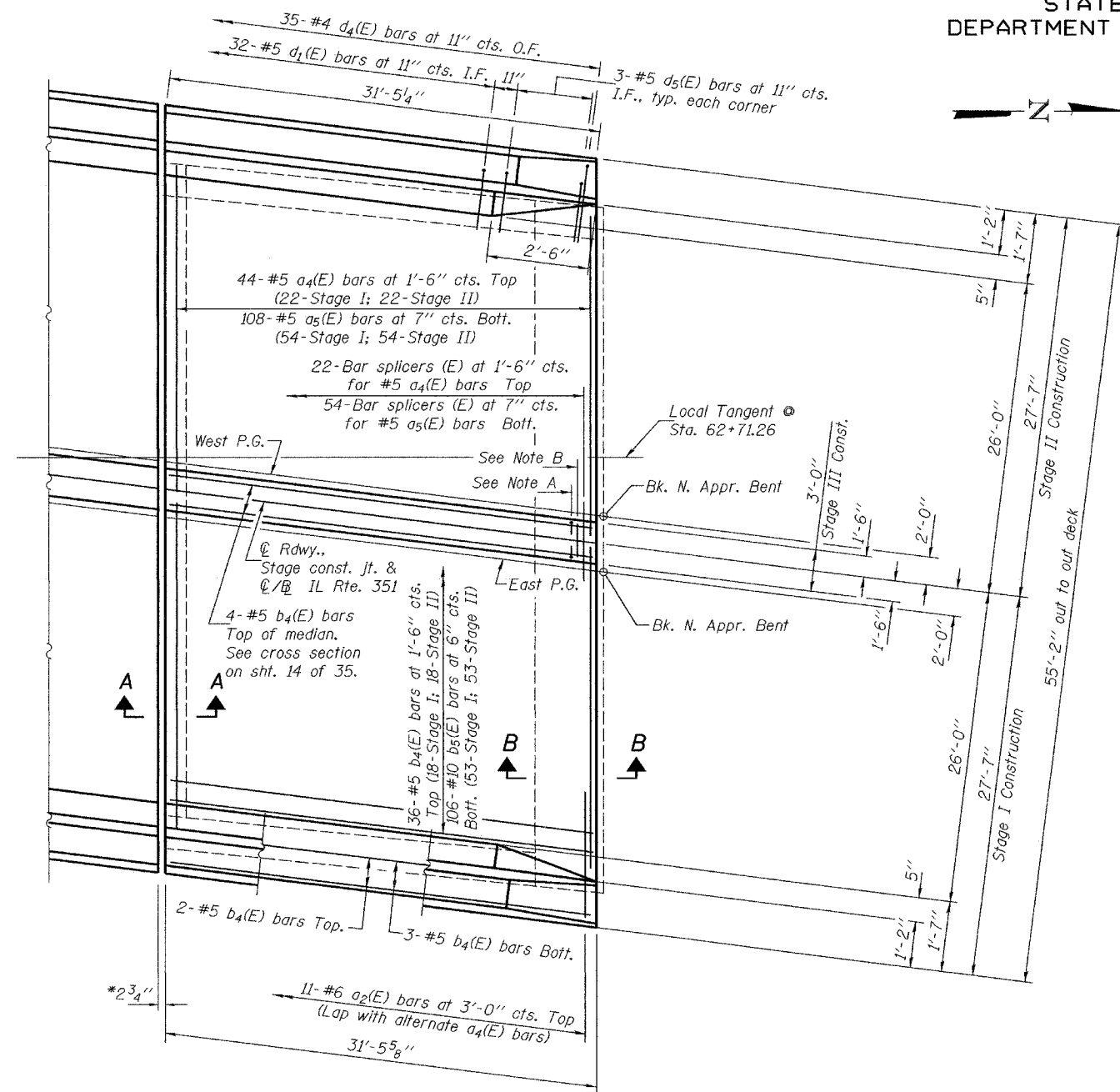


STATE OF ILLINOIS
DEPARTMENT OF TRANSPORTATION

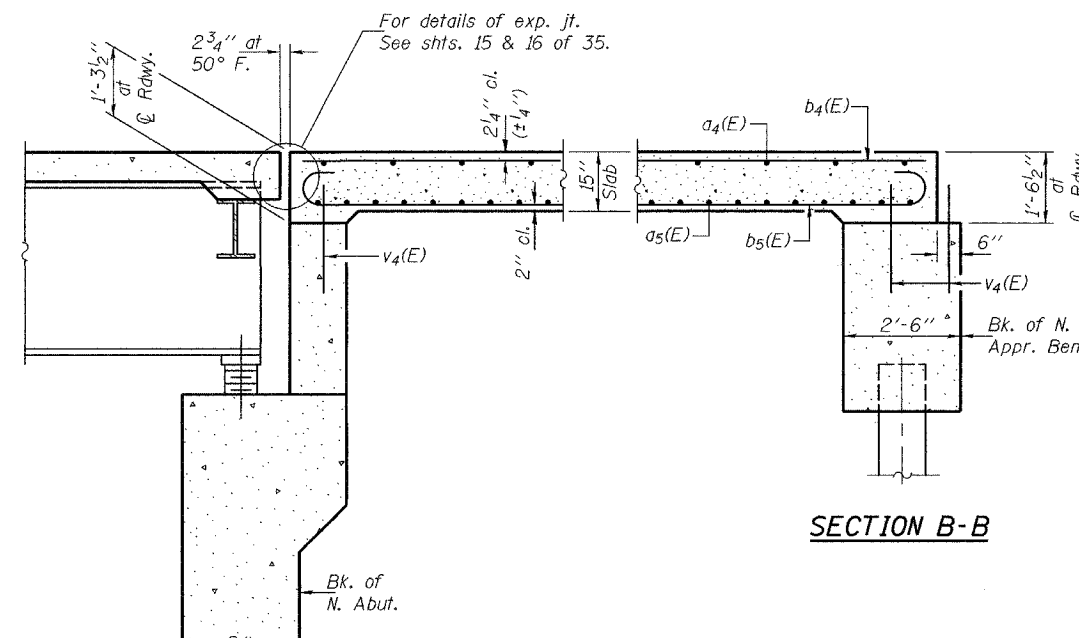
ROUTE NO.	SECTION	COUNTY	DATE	SHEET NO.	SHEET NO. 13 35 SHEETS
F.A.I. 80	(50-2) HBR	LaSALLE		155	
FED. ROAD DIST. NO. 7		ILLINOIS		FED. AID PROJECT	
Contract No. 86603					



PLAN

Note A: 33-#5 c(E) bars at 12" cts. Each face of median.
33-3/4" ϕ Expansion anchors (E) for #5 c(E) bars.
Each face of median. See cross section on sheet 14 of 35.

Note B: 33-#5 c1(E) bars at 12" cts. in top of median.
See cross section on sheet 14 of 35.



SECTION A-A

SECTION B-B

BILL OF MATERIAL

Bar	No.	Size	Length	Shape
a2(E)	22	#6	4'-6"	—
a4(E)	44	#5	27'-3"	—
a5(E)	108	#5	26'-6"	—
b4(E)	50	#5	31'-2"	—
b5(E)	106	#10	34'-0"	—
c(E)	66	#5	1'-10"	┌
c1(E)	33	#5	2'-5"	—
d(E)	70	#5	3'-0"	—
d1(E)	64	#5	2'-5"	└
d2(E)	70	#4	3'-0"	—
d4(E)	70	#4	4'-6"	┌
d5(E)	6	#5	2'-4"	└
e9(E)	24	#4	15'-5"	—
e10(E)	8	#5	16'-6"	—
e11(E)	8	#8	17'-5"	—
Reinforcement Bars, Epoxy Coated			Lbs.	23230
Concrete Superstructure			Cu. Yd.	91.4

Reinforcement bars and expansion anchors designated (E) shall be epoxy coated.

Notes: For approach details and parapet reinforcement, see sheet 14 of 35.
Longitudinal dimensions are given along outside face of parapet.
Transverse dimensions are given radially.
For details of bars c(E), d(E), d1(E) & d2(E), see sheet 10 of 35.
For details of bars d4(E), d5(E) & b5(E), see sheet 12 of 35.
* Measured along local tangent at Sta. 62+71.26.

DESIGNED	RLM
CHECKED	CME
DRAWN	h.t. parsons
CHECKED	RLM/CME

Nov. 29, 2004
EXAMINED *Thomas J. Damgalab*
ENGINEER OF PUBLIC DESIGN
PASSED *Ralph E. Anderson*
ENGINEER OF BRIDGES AND STRUCTURES

NORTH APPROACH SLAB
F.A.I. RT. 80 - SEC. (50-2)HBR
LaSALLE COUNTY
STATION 62+39.22
STRUCTURE NO. 050-0230