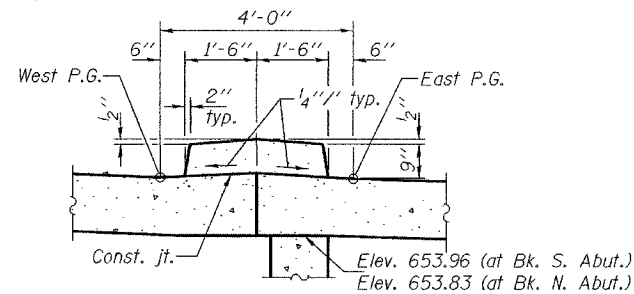
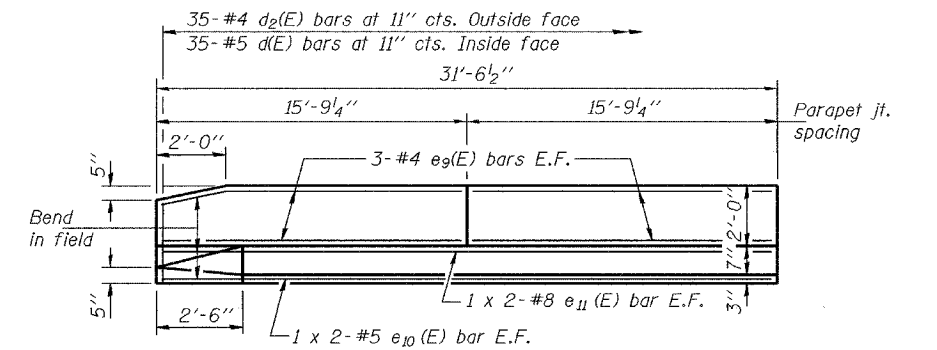
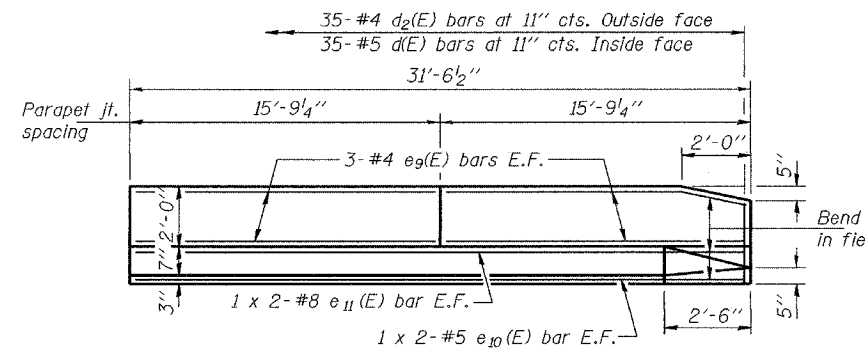
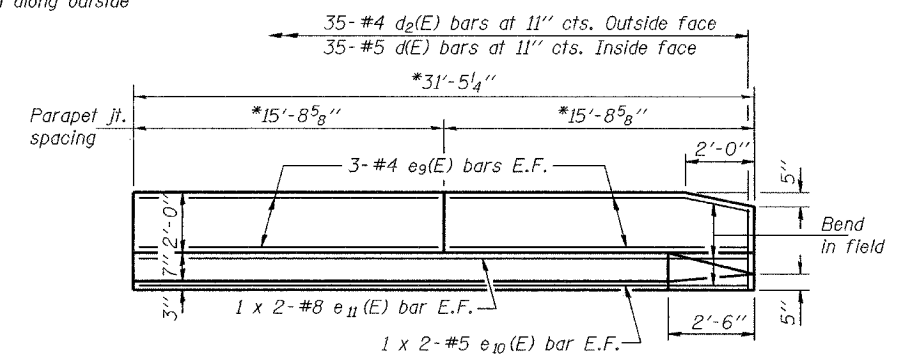
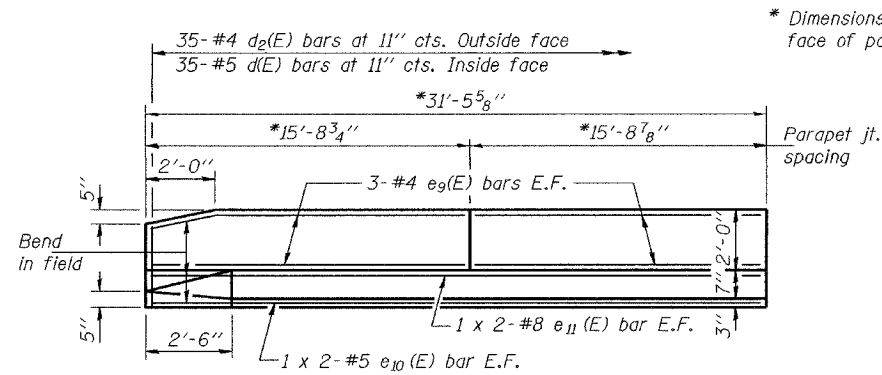
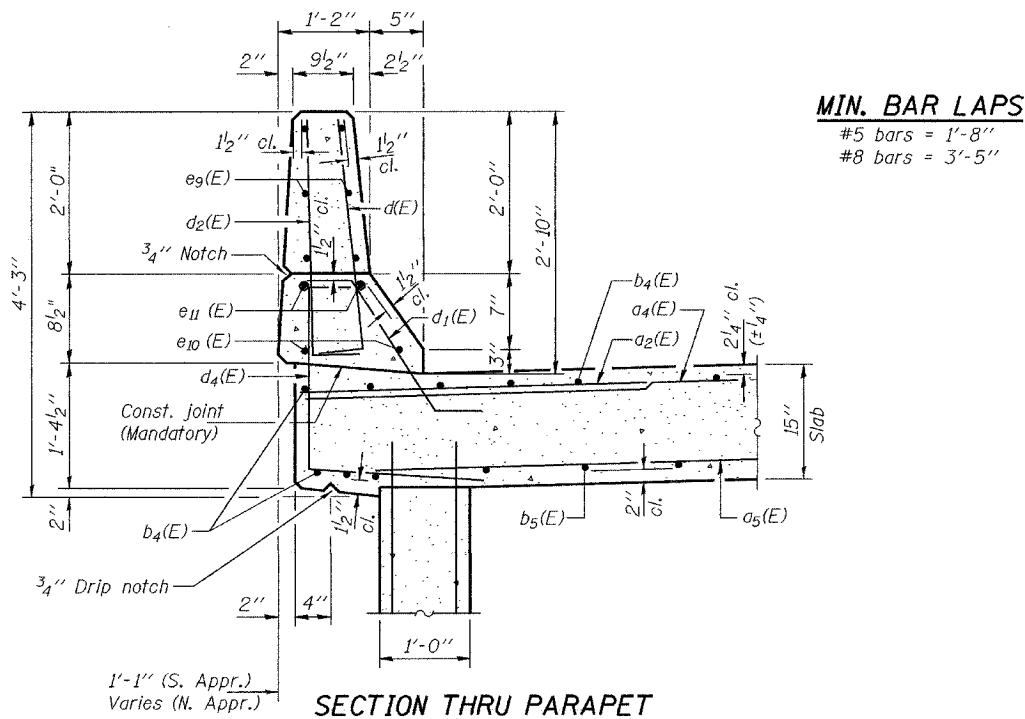


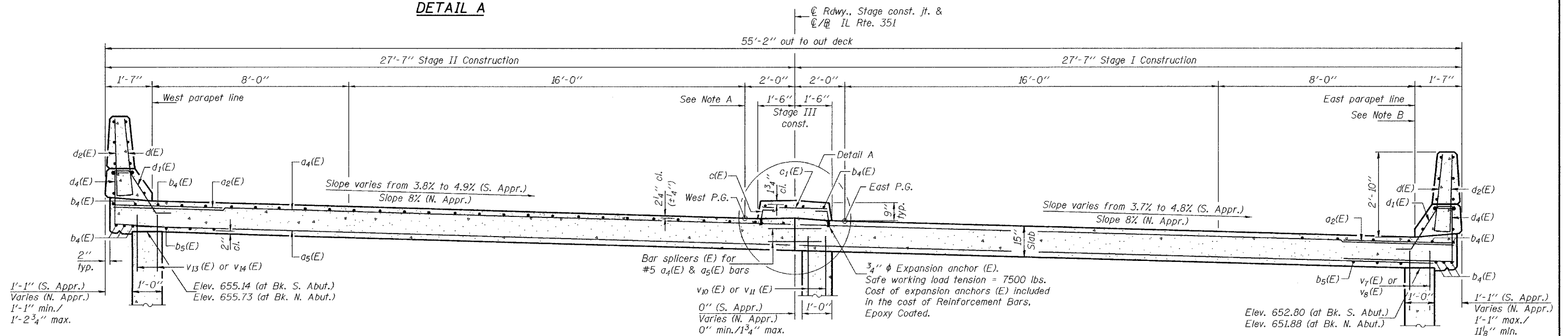
STATE OF ILLINOIS
DEPARTMENT OF TRANSPORTATION

ROUTE NO.	SECTION	COUNTY	DATE	SHEET NO.
F.A.I. 80	(50-2) HBR	LaSALLE	156	35 SHEETS
FED. ROAD DIST. NO. 7	ILLINOIS	FED. AID PROJECT-		

Contract No. 86603



Notes:
Bars indicated thus 20 x 3-#5 etc. indicates 20 lines of bars with 3 lengths per line.
Reinforcement bars designated (E) shall be epoxy coated.
For bar splicer details, see sheet 29 of 35.
For parapet joint details, see sheet 10 of 35.



DESIGNED	RLM
CHECKED	CME
DRAWN	h.f. parsons
CHECKED	RLM/CME

Nov. 29, 2004

EXAMINED *Thomas J. Damagala*
ENGINEER OF BRIDGE DESIGN

PASSED *Ralph E. Carls*
ENGINEER OF BRIDGES AND STRUCTURES

Note A:
S. Appr. : Total drop varies. Drop is measured from West parapet line to West P.G.
N. Appr. : Total drop = 1'-11" constant across approach slab. Drop is measured from West parapet line to West P.G.

Note B:
S. Appr. : Total drop varies. Drop is measured from East P.G. to East parapet line.
N. Appr. : Total drop = 1'-11" constant across approach slab. Drop is measured from East P.G. to East parapet line.

APPROACH SLAB DETAILS
F.A.I. RT. 80 - SEC. (50-2)HBR
LaSALLE COUNTY
STATION 62+39.22
STRUCTURE NO. 050-0230