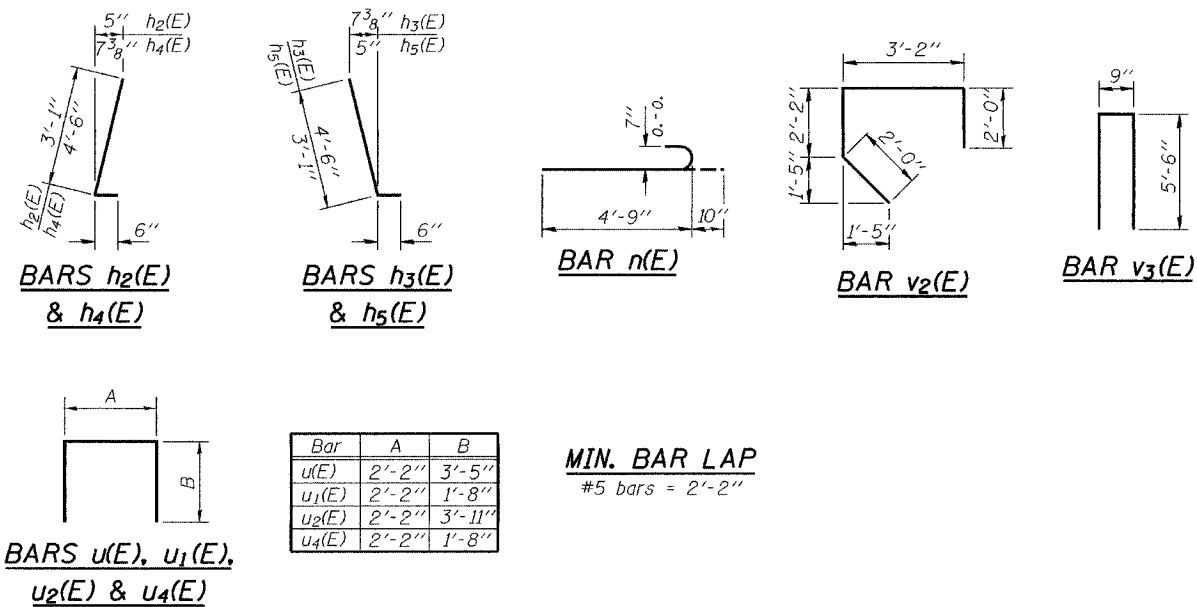
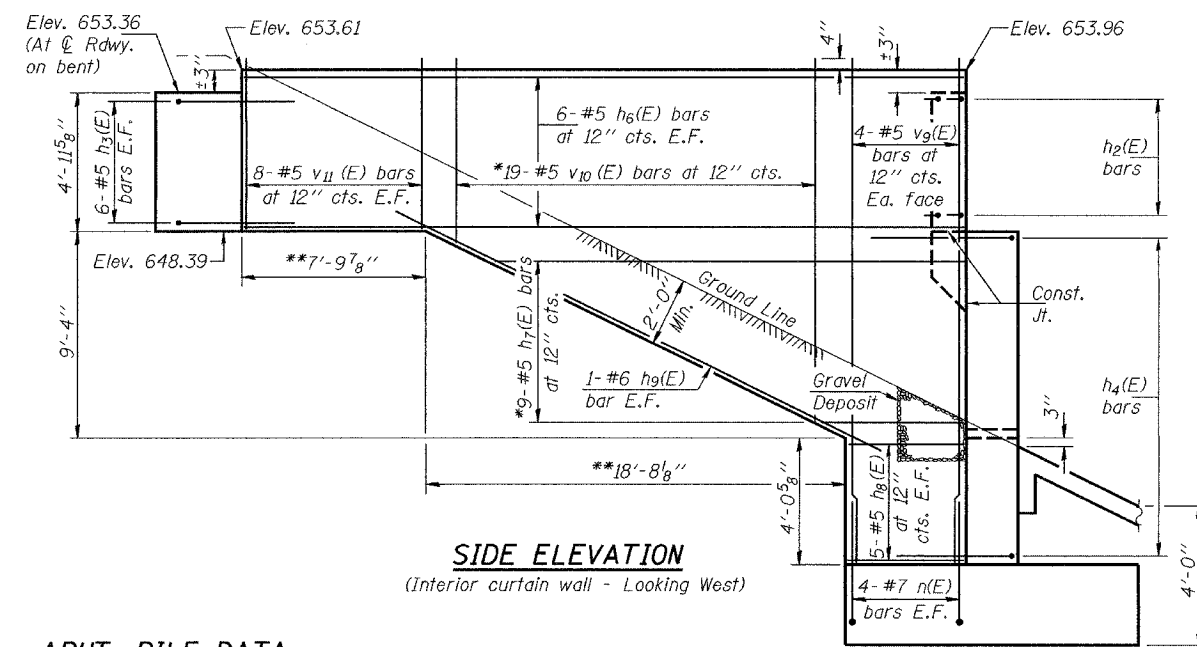
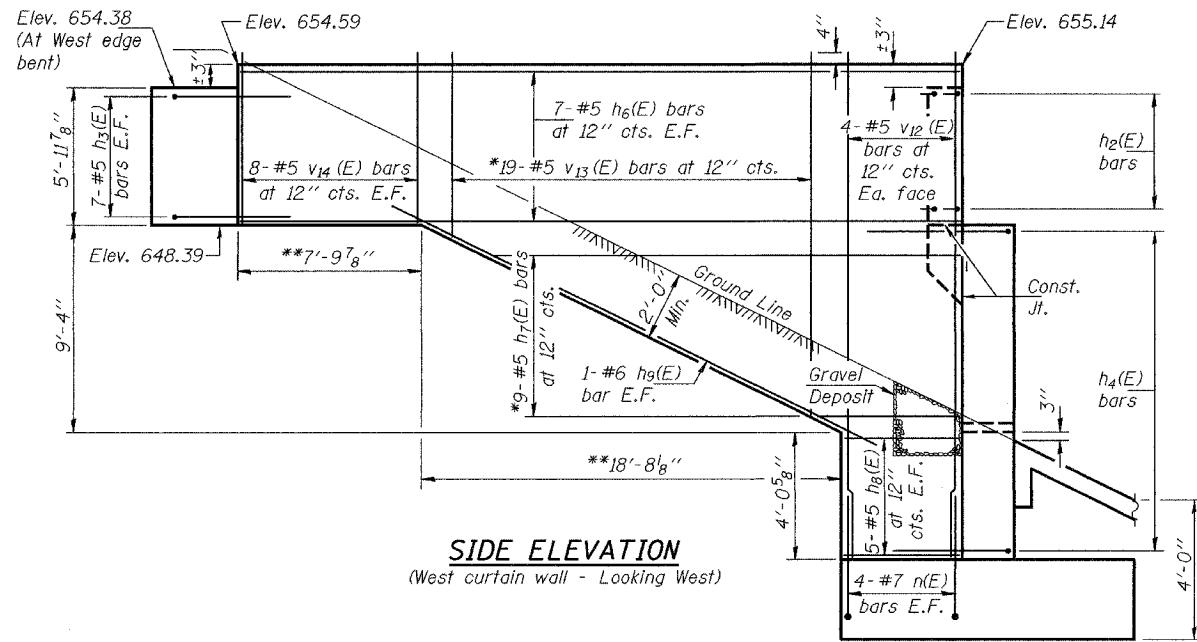
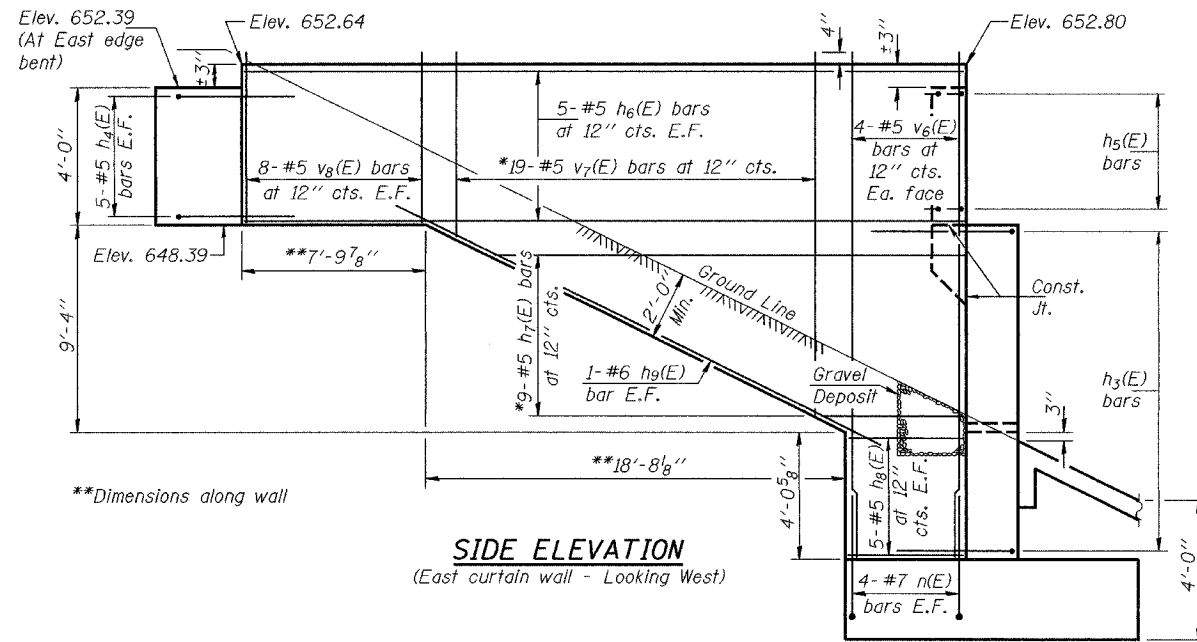


STATE OF ILLINOIS  
DEPARTMENT OF TRANSPORTATION

ROUTE NO.	SECTION	COUNTY	TOTAL SHEETS	SHEET NO.
F.A.I. 80	(50-2) HBR	LaSALLE	168	35 SHEETS
FED. ROAD DIST. NO. 7		ILLINOIS	FED. AID PROJECT	
Contract No. 86603				



**BILL OF MATERIAL**

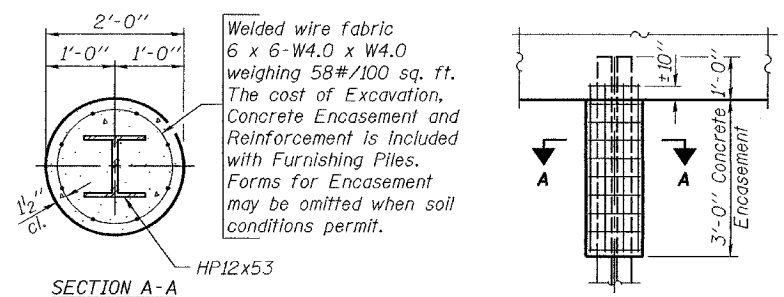
Bar	No.	Size	Length	Shape
$h(E)$	56	#6	26'-5"	—
$h_1(E)$	12	#5	24'-5"	—
$h_2(E)$	24	#5	3'-7"	L
$h_3(E)$	56	#5	5'-0"	L
$h_4(E)$	70	#5	5'-0"	L
$h_5(E)$	8	#5	3'-7"	L
$h_6(E)$	36	#5	29'-3"	—
$h_7(E)$	27	#5	24'-8"	—
$h_8(E)$	30	#5	2'-9"	—
$h_9(E)$	6	#6	22'-0"	—
$h_{10}(E)$	12	#5	25'-6"	—
$h_{11}(E)$	8	#5	26'-5"	—
$h_{15}(E)$	12	#5	8'-7"	—
$h_{16}(E)$	3	#5	26'-4"	—
$h_{17}(E)$	3	#5	5'-4"	—
$h_{18}(E)$	3	#5	6'-11"	—
$n(E)$	200	#7	5'-7"	U
$p(E)$	26	#7	26'-5"	—
$t(E)$	86	#7	8'-2"	—
$t_1(E)$	58	#6	8'-2"	—
$v_1(E)$	106	#5	4'-8"	—
$v_2(E)$	56	#5	9'-4"	—
$v_3(E)$	53	#5	11'-9"	—
$v_4(E)$	165	#5	2'-3"	—
$v_5(E)$	176	#6	13'-9"	—
$v_6(E)$	8	#5	18'-0"	—
$v_7(E)$	19	#5	18'-6"	—
$v_8(E)$	16	#5	4'-6"	—
$v_9(E)$	8	#5	19'-3"	—
$v_{10}(E)$	19	#5	20'-8"	—
$v_{11}(E)$	16	#5	5'-6"	—
$v_{12}(E)$	8	#5	20'-5"	—
$v_{13}(E)$	19	#5	22'-10"	—
$v_{14}(E)$	16	#5	6'-6"	—
$u(E)$	52	#5	9'-0"	—
$u_1(E)$	42	#5	5'-6"	—
$u_2(E)$	52	#5	10'-0"	—
$u_4(E)$	28	#4	5'-6"	—
$w(E)$	68	#5	15'-1"	—
Concrete Structures	Cu. Yd.		181.8	
Reinforcement Bars, Epoxy Coated	Pound		22140	
Furnishing Steel Piles HP12x53	Foot		1462	
Driving Steel Piles	Foot		1462	
Test Pile Steel HP12x53	Each		1	
Structure Excavation	Cu. Yd.		277.1	
Sand Backfill	Cu. Yd.		347.6	

**ABUT.-PILE DATA**  
Type: HP12x53  
Capacity: Driven to refusal  
Est. Length: 50'  
No. Req'd.: 19 + 1 test pile

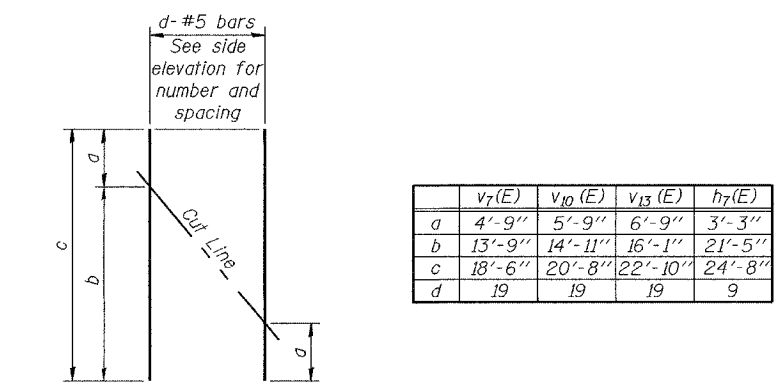
**APPR. BENT-PILE DATA**  
Type: HP12x53  
Capacity: Driven to refusal  
Est. Length: 64'  
No. Req'd.: 8

DESIGNED	RLM
CHECKED	CME
DRAWN	h.t. parsons
CHECKED	RLM/CME

Nov. 29, 2004  
EXAMINED *Thomas J. Damagala*  
ENGINEER OF BRIDGE DESIGN  
PASSED *Ralph E. Carlson*  
ENGINEER OF BRIDGES AND STRUCTURES



**PILE ENCASEMENT DETAIL**



**FIELD CUTTING DIAGRAM**  
\* Order  $h_7(E)$ ,  $v_7(E)$ ,  $v_{10}(E)$  &  $v_{13}(E)$  bars full length. Cut to fit as shown and use remainder of bars in other face.

**SOUTH ABUTMENT DETAILS**  
F.A.I. RT. 80 - SEC. (50-2)HBR  
LaSALLE COUNTY  
STATION 62+39.22  
STRUCTURE NO. 050-0230