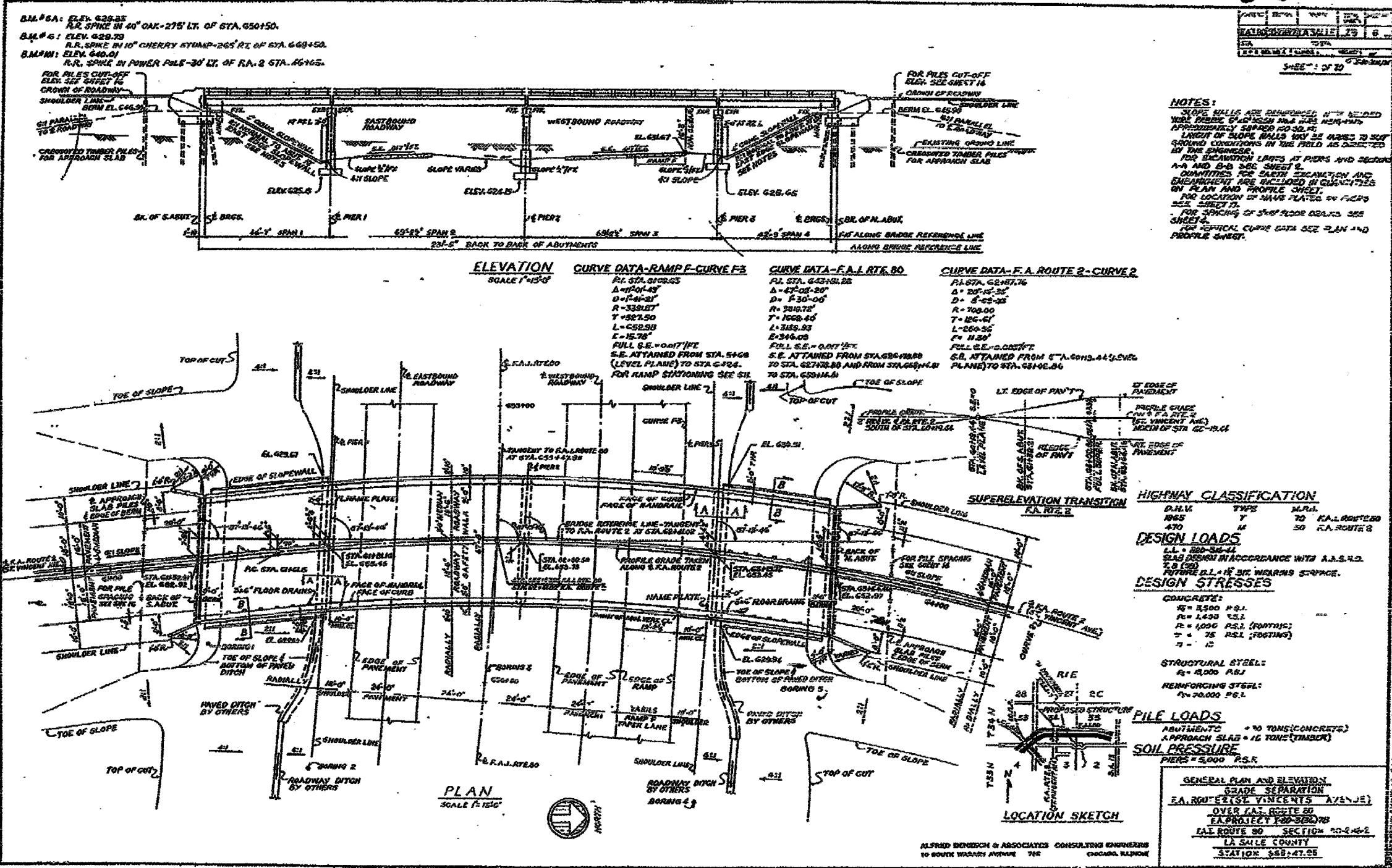


CONTRACT NO. 86603

3-50



NOTES:
 SLOPE WALLS ARE REINFORCED WITH STEEL
 WHEN EXCAVATION LIMITS AT PIERS AND SPANS
 APPROXIMATELY 50' TO 60' IN DEPTH
 QUANTITIES FOR EARTH EXCAVATION AND
 EMBANKMENT ARE INCLUDED IN QUANTITIES
 ON PLAN AND PROFILE SHEET.
 NO LOCATION OF BARS PLATED ON PILES
 SEE SHEET 17.
 FOR SPACING OF 5'-0\"/>

HIGHWAY CLASSIFICATION

| D.M.V. | TYP. | M.R.A. |
|--------|------|------------------|
| 1965 | 7 | TO R.A. ROUTE 80 |
| 470 | M | 30 R.A. ROUTE 2 |

DESIGN LOADS
 LL = 800-300-11
 SLAB DESIGN IN ACCORDANCE WITH A.S.E.C.D.
 7.3 (2)
 FUTURE D.L. 1.15 FOR WEARING SURFACE.

DESIGN STRESSES

CONCRETE:
 f_c = 3500 P.S.I.
 f_t = 1420 P.S.I.
 f_r = 1000 P.S.I. (FOOTING)
 f_r = 75 P.S.I. (TODGING)
 γ = 150

STRUCTURAL STEEL:
 f_y = 40,000 P.S.I.

REINFORCING STEEL:
 f_y = 70,000 P.S.I.

PILE LOADS
 ABUTMENTS = 70 TONS (CONCRETE)
 APPROACH SLAB = 16 TONS (TIMBER)

SOIL PRESSURE
 PIERS = 3,000 P.S.F.

GENERAL PLAN AND ELEVATION
 GRADE SEPARATION
 R.A. ROUTE 2 (ST. VINCENT AVENUE)
 OVER R.A. ROUTE 80
 F.A. PROJECT FOR 500' WB
 R.A. ROUTE 80 SECTION 20-E-40-2
 LA SALLE COUNTY
 STATION 588+47.25

* DATE-TIME *
 * DON-SPEC *