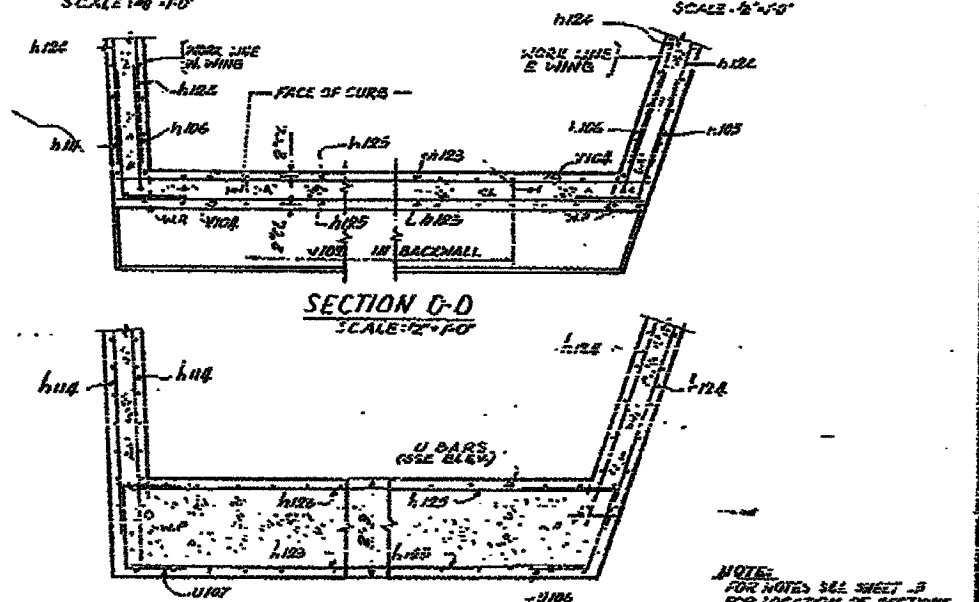
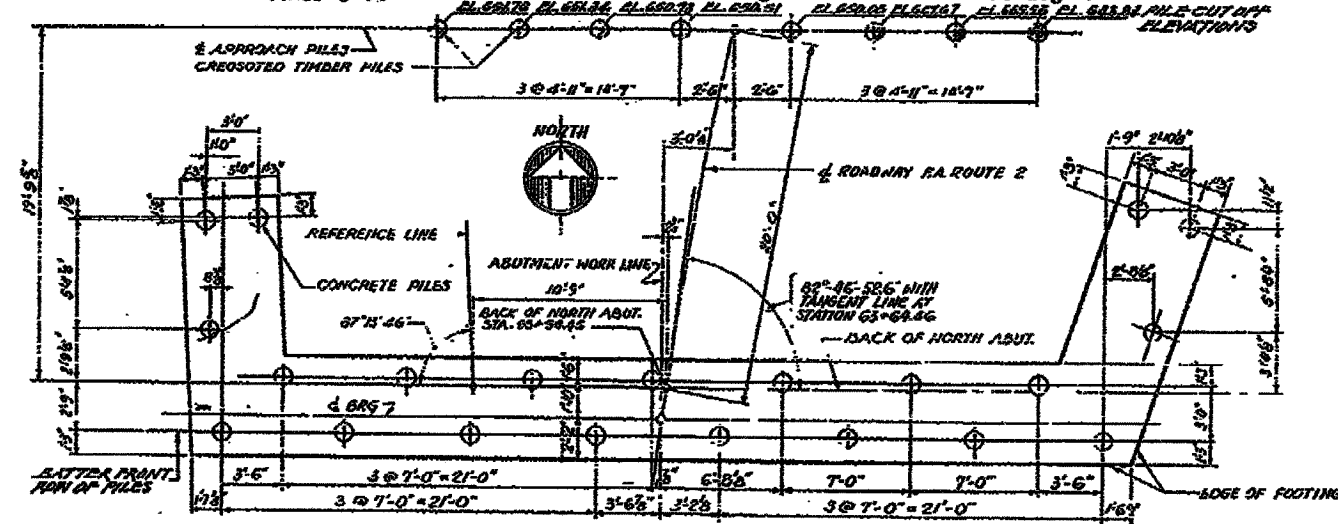
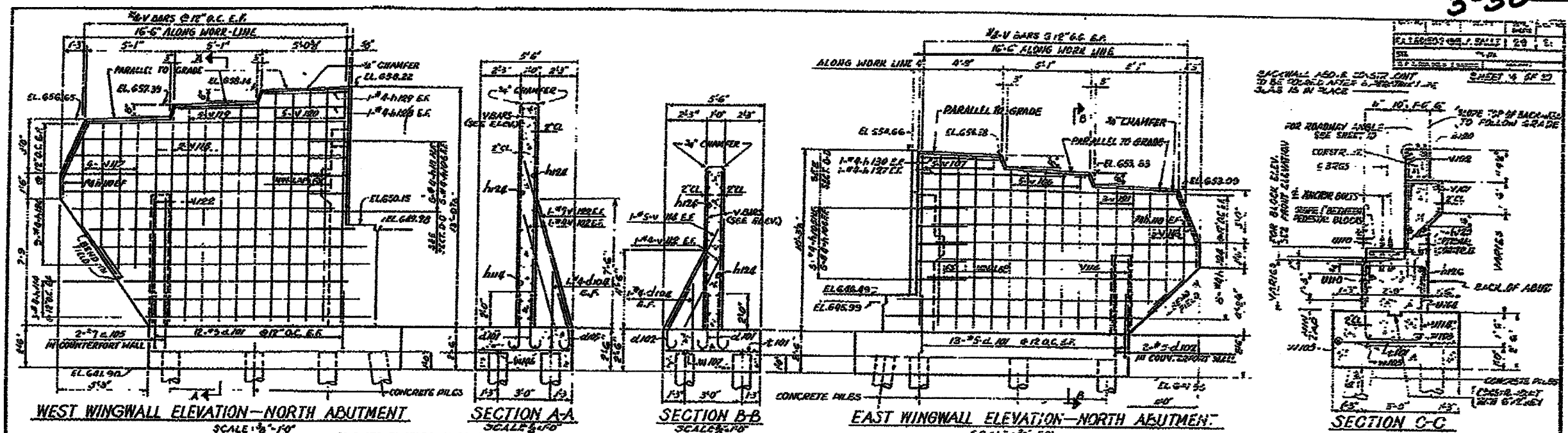


CONTRACT NO. 86603

3-50



**PILE SCHEDULE**

CONCRETE PILES, CAPACITY 30 TONS		
LOCATION	NO. OF PILES	LENGTH
NORTH ABUTMENT	21	26.0'

CREOSOTED TIMBER PILES, CAPACITY 15 TONS		
LOCATION	NO. OF PILES	LENGTH
NORTH APPROACH	8	27'

**BILL OF MATERIAL FOR APPROACH SLAB PILES**

ITEM	QUANTITY	
	UNIT	N. APPROACH
CREOSOTED TIMBER PILES, 201 TO 36 PF.	LN. FT.	216

**BILL OF MATERIAL FOR NORTH ABUTMENT & WINGWALLS**

ITEM	UNIT	QUANTITY
CLASS X CONCRETE	CU YDS	77.1
REINFORCEMENT BARS	POUND	4660
CONCRETE PILES	LN. FT.	546

**NOTE:** FOR NOTES SEE SHEET 5 FOR LOCATION OF SECTIONS C-C, D-D AND E-E SEE 50-73

**NORTH ABUTMENT DETAILS**  
 GRADE SEPARATION  
 R.A. ROUTE 2 (SEE VINCENTS AVENUE)  
 OVER EAST HOLE RD  
 PROJECT  
 PLAN SHEET 50  
 SECTION 150-21HR  
 LA SALLE COUNTY  
 STATION 653+47.9'

ALFRED BENESON & ASSOCIATES CONSULTING ENGINEERS  
 10 SOUTH MADISON AVENUE 706 CHICAGO, ILLINOIS

\* DATE-TIME \*  
 \* DGN-SPEC \*