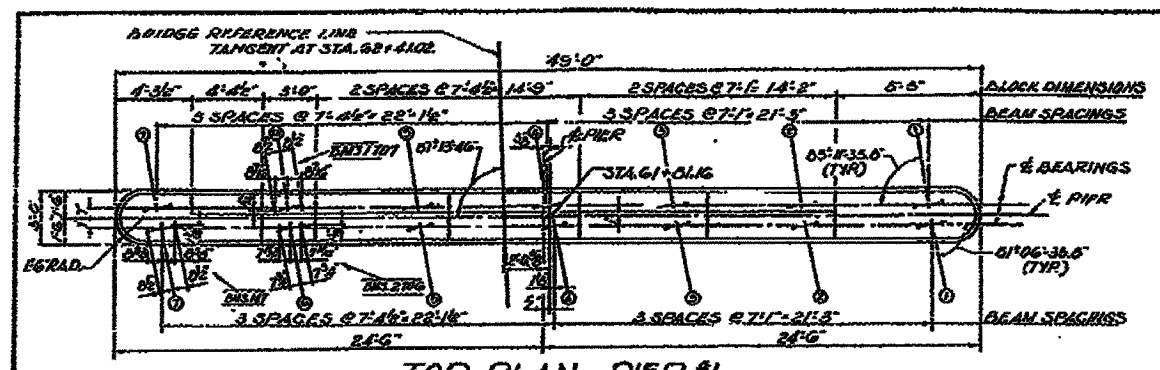
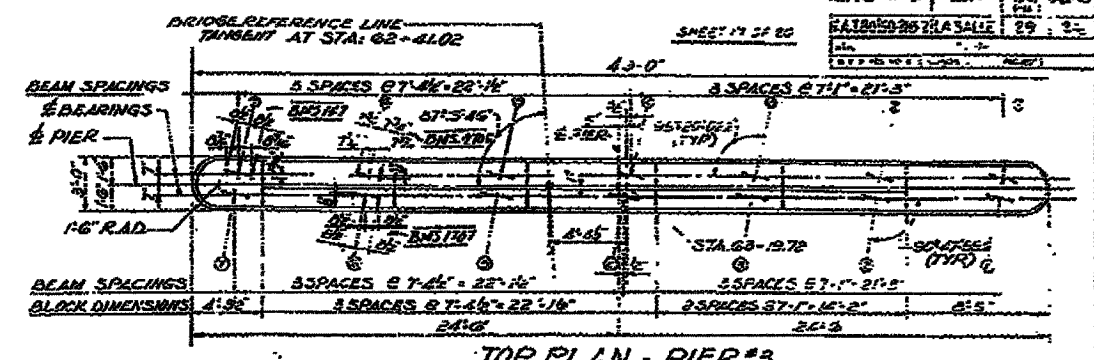


P. A. L. NO.	SECTION	COUNTY	TOTAL SHEETS	SHEET NO.
80	150-2NBR	LA SALLE	460	185
STA.	TO STA.			
FED. ROAD DIST. NO.	BLINDS	FED. AID PROJECT		

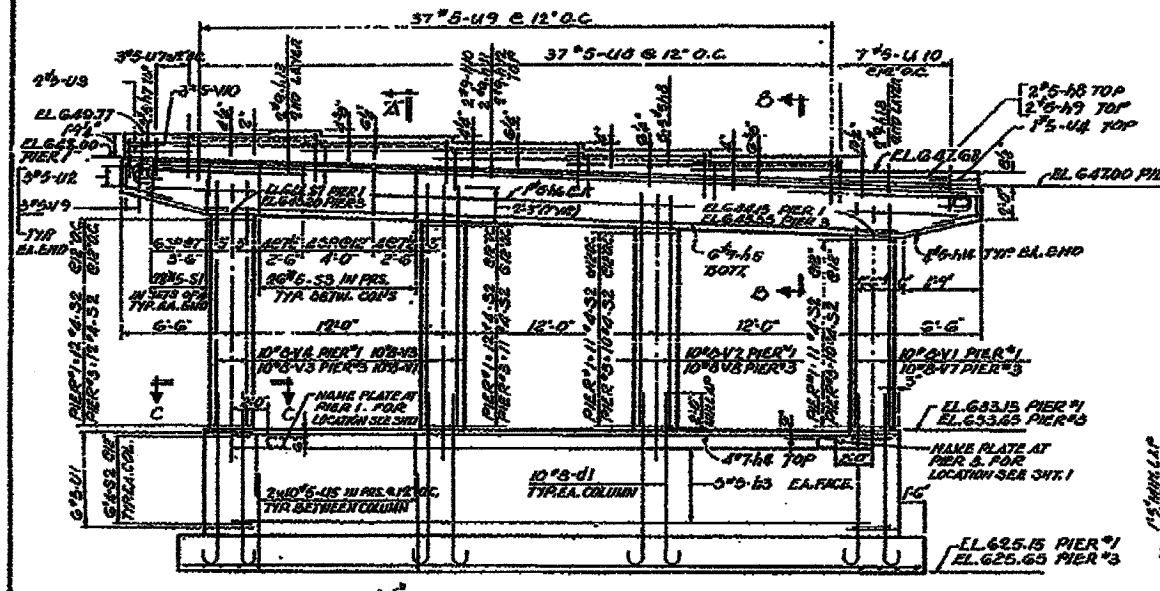
CONTRACT NO. 86603



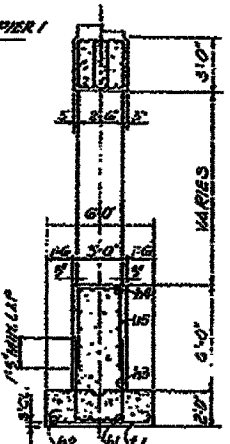
TOP PLAN - PIER #1
SCALE: 1/4"=1'-0"



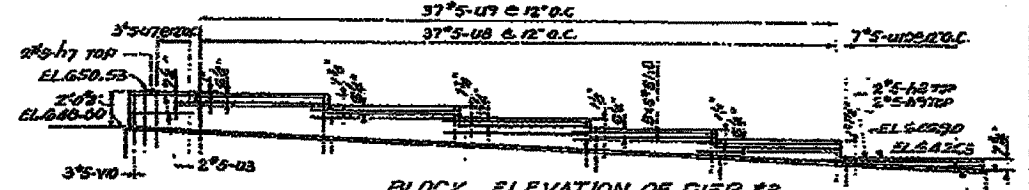
TOP PLAN - PIER #3
SCALE: 1/4"=1'-0"



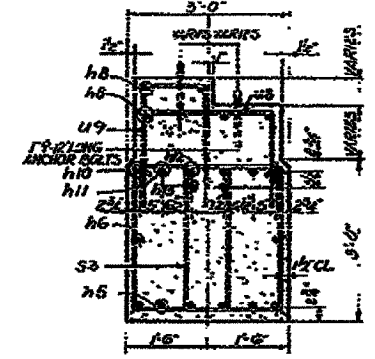
ELEVATION
SCALE: 1/4"=1'-0"



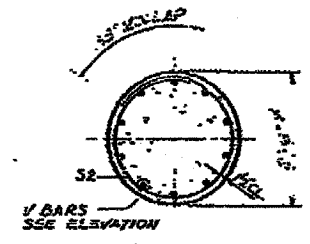
SECTION A-A
SCALE: 1/4"=1'-0"



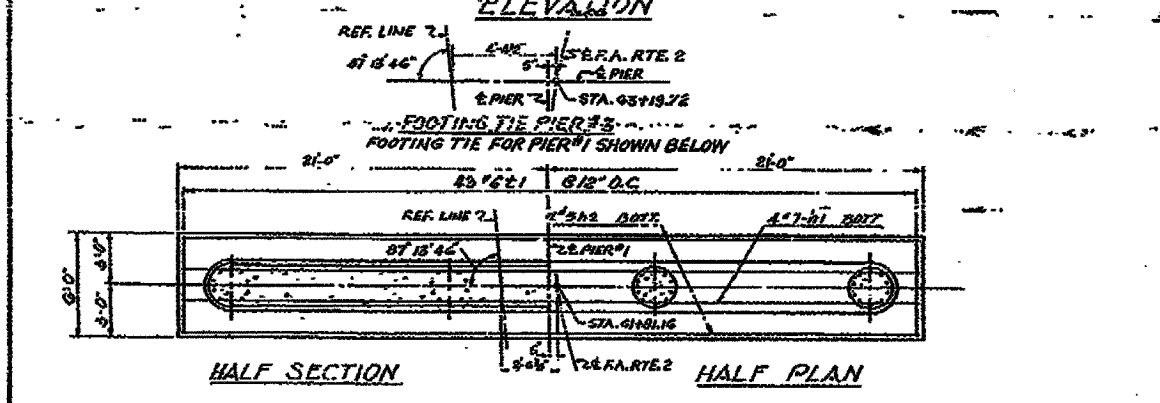
BLOCK ELEVATION OF PIER #3
SCALE: 1/4"=1'-0"



SECTION B-B
SCALE: 3/4"=1'-0"



SECTION C-C
SCALE: 1/2"=1'-0"



FOOTING PLAN
SCALE: 1/4"=1'-0"

NOTE:
PIEDestal STEPS TO BE POURED MONOLITHICALLY WITH TOP BEAM. SHALL BE IN ACCORDANCE WITH INTERFERING WITH DRILLING OF HOLES FOR ANCHOR BOLTS.

SILL OF MATERIAL

ITEM	UNIT	PIER #1	PIER #3
CLASS 2 CONCRETE	CUBIC YDS.	74.7	76.5
REINFORCEMENT BARS	POUNDS	2750	2500
CLASS 1 EXCAVATION	CUBIC YDS.	85	92

PIERS #1 & 3
GRADE SEPARATE ON
R.A. 20'-0" ELEVATION
OVER RAIL ROUTE 80
PROJECT
RACINE RD SEC 24 TOWNSHIP 4
LA SALLE COUNTY
STAT. ON 688+27.58

ALFRED BENSCH & ASSOCIATES CONSULTING ENGINEERS
10 SOUTH WABASH AVENUE CHICAGO, ILLINOIS

DATE-TIME
DGN-SPEC

FOR INFORMATION ONLY

EXISTING BRIDGE PLANS