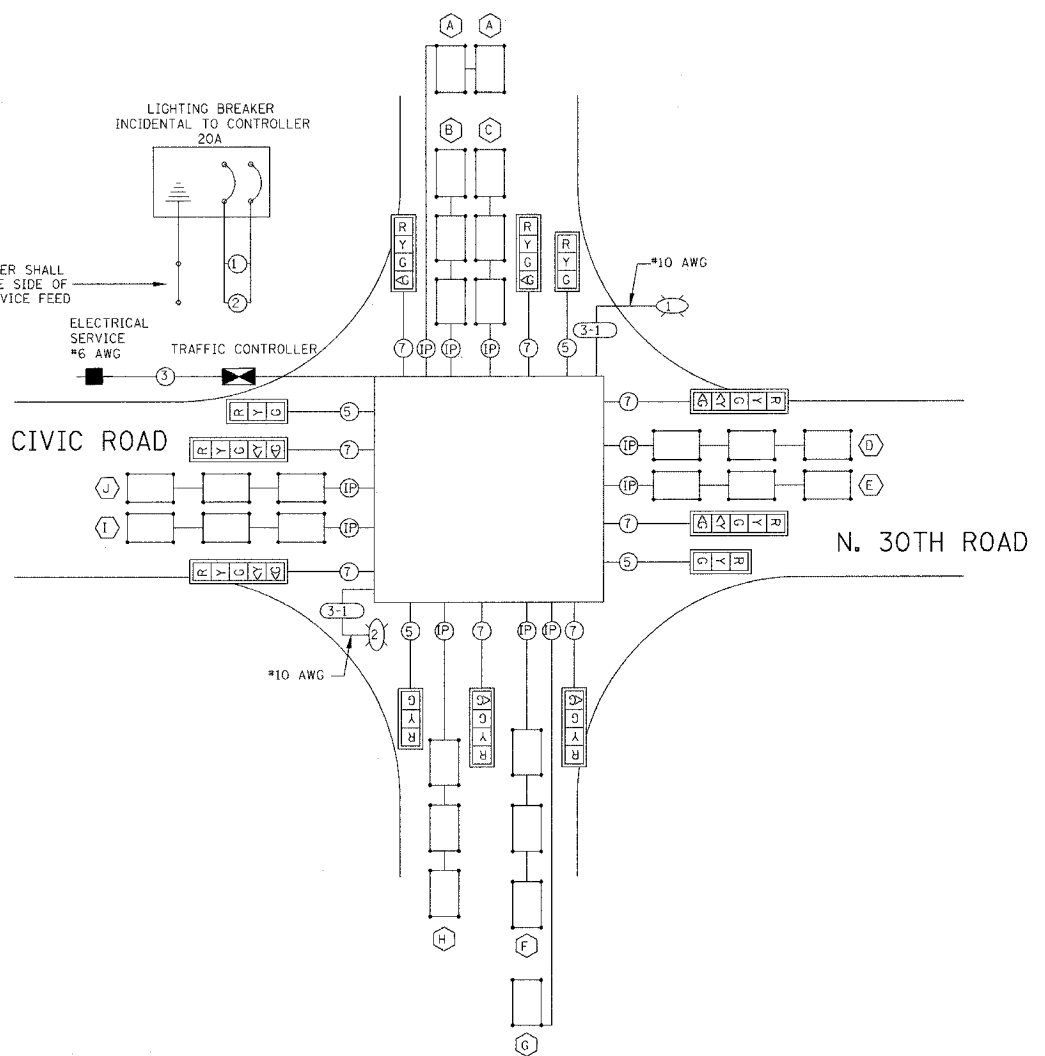
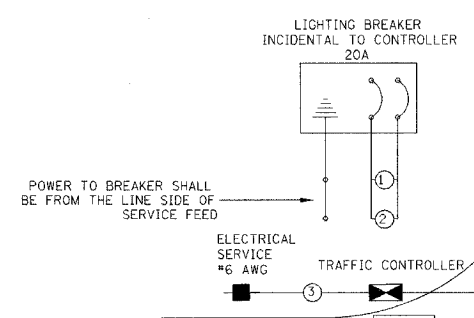


PHASE DESIGNATION DIAGRAM



CABLE PLAN



POWER TO BREAKER SHALL BE FROM THE LINE SIDE OF SERVICE FEED

ELECTRICAL LOAD CHART

| N.B. ILLINOIS ROUTE 351 | | | |
|-------------------------|--------|--------------|---------------|
| SIGNAL SECTION | NUMBER | WATTAGE EACH | BURN TIME (%) |
| RED | 3 | 10 | 81 |
| YELLOW | 3 | 19 | 5 |
| GREEN | 3 | 14 | 14 |
| GREEN ARROW | 2 | 7 | 14 |
| LUMINAIRE | 2 | 250 | 50 |

| S.B. ILLINOIS ROUTE 351 | | | |
|-------------------------|--------|--------------|---------------|
| SIGNAL SECTION | NUMBER | WATTAGE EACH | BURN TIME (%) |
| RED | 3 | 10 | 65 |
| YELLOW | 3 | 19 | 5 |
| GREEN | 3 | 14 | 30 |
| GREEN ARROW | 2 | 7 | 30 |

| CIVIC RD./N. 30TH ROAD | | | |
|------------------------|--------|--------------|---------------|
| SIGNAL SECTION | NUMBER | WATTAGE EACH | BURN TIME (%) |
| RED | 6 | 10 | 70 |
| YELLOW | 6 | 19 | 5 |
| GREEN | 6 | 14 | 25 |
| YELLOW ARROW | 4 | 9 | 5 |
| GREEN ARROW | 4 | 7 | 11 |

| TRAFFIC SIGNAL CABINET | | | |
|------------------------|--------|--------------|---------------|
| ITEM | NUMBER | WATTAGE EACH | BURN TIME (%) |
| CONTROLLER | 1 | 6 | 100 |
| LOOP DETECTORS | 10 | 4 | 100 |

| FOUNDATION DEPTH TABLE | | |
|------------------------|---------------|------------------|
| TYPE | LOCATION | FOUNDATION DEPTH |
| MAST ARM | N.E. QUADRANT | 13' |
| MAST ARM | S.E. QUADRANT | 13' |
| MAST ARM | N.W. QUADRANT | 13' |
| MAST ARM | S.W. QUADRANT | 13' |
| TRAFFIC SIGNAL POST | ALL (4 EACH) | 3' |
| CONTROLLER CABINET | N.W. QUADRANT | 3.5' |

NOTE: THE CONTROLLER FOUNDATION EXTENDS 6" ABOVE GRADE.

DETECTOR LOOP INDUCTANCE CHART

| LOOP SYSTEM | LABEL | NUMBER OF TURNS | INDUCTANCE (mH) | FREQUENCY (HERTZ) | J PIN STATUS |
|-------------|-----------------|-----------------|-----------------|-------------------|--------------|
| A | dia. 1 SB FAR | 5 | 513 | 26,947 | ON |
| B | dia. 1 SB STBRT | 3 | 575 | 25,467 | ON |
| C | dia. 1 SB STBRT | 3 | 578 | 25,386 | ON |
| D | dia. 8 WB | 3 | 595 | 25,021 | ON |
| E | dia. 3 WBL | 3 | 602 | 24,772 | ON |
| F | dia. 2 NB STBR | 3 | 656 | 23,829 | ON |
| G | dia. 2 NB FAR | 5 | 436 | 29,229 | ON |
| H | dia. 2 NBL | 3 | 607 | 24,772 | ON |
| I | dia. 4 EB | 3 | 590 | 25,127 | ON |
| J | dia. 7 EBLT | 3 | 597 | 24,979 | ON |

J PIN STATUS:
 "ON" MEANS STANDARD DETECTOR SETUP.
 "OFF" MEANS THE J WIRE HAS BEEN DISCONNECTED, BUT INTACT AT THE HARNESS PANEL WITH THE NECESSARY SPADE CONNECTION ATTACHED, MARKED AND INSULATED.

CABLE PLAN LEGEND

- SIGNAL SECTION 12"
- CONTROLLER CABINET
- VEHICLE DETECTOR, INDUCTION LOOP
- SERVICE INSTALLATION
- ELECTRIC CABLE IN CONDUIT
ALL CABLE NO. 14 EXCEPT AS INDICATED
• DENOTES NUMBER OF CONDUCTORS
• P DENOTES NUMBER OF PAIRS IN TWISTED SHIELDED CABLE
- SIGNAL FACE WITH BACKPLATE
- 250 WATT HPS LUMINAIRE
- DETECTOR LOOP IDENTIFICATION

AGENCY RESPONSIBLE FOR ENERGY CHARGES:
CITY OF LASALLE

| REVISIONS | |
|-----------|---------|
| NAME | DATE |
| W.C.D. | 6/26/03 |
| W.C.D. | 9/25/03 |
| W.C.D. | 3/2/04 |

ILLINOIS DEPARTMENT OF TRANSPORTATION
TRAFFIC SIGNAL DETAILS
 FAU 6108 (IL. RTE. 351)
 SECTION (70XN & TS-1)
 LASALLE COUNTY

SCALE: VERT. _____
 HORIZ. _____
 DATE: 6/4/03

DRAWN BY: C.S.
 DESIGNED BY: W.C.D.
 CHECKED BY: W.C.D.

COMPUTER FILE NO. TSDET4
 PROJECT 01194_B.N
 4/16/04 - MDS

CBB Crawford, Bunte, Brummeler
 Traffic and Transportation Engineers
 St. Louis, Missouri / Glen Carbon, Illinois
 314-918-6644 618-656-2662
 Fax 314-878-5876 E-Mail cbb@cbbrt.com