

F.A.U. RTE.	SECTION	COUNTY	TOTAL SHEETS	SHEET NO.
6108	(70XN & TS-1)	LA SALLE	460	341
STA.	TO STA.			
FED. ROAD DIST. NO.	ILLINOIS	FED. AID PROJECT		

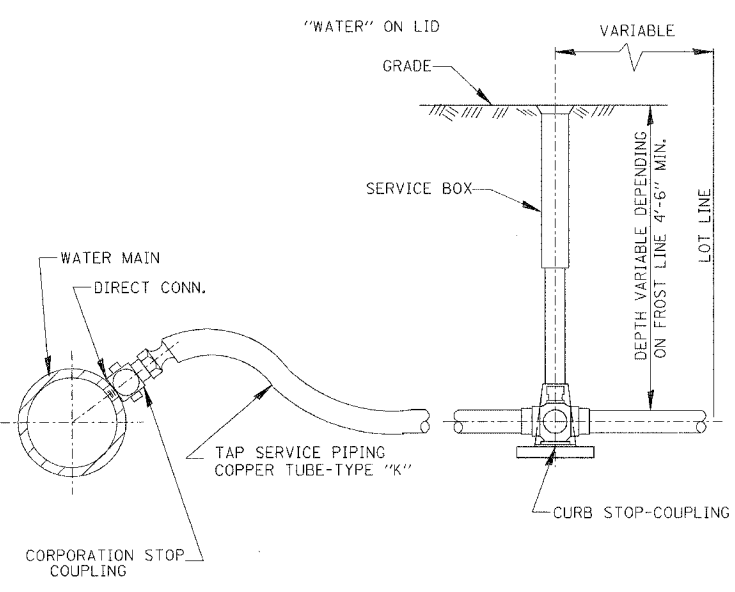
CONTRACT NO. 86603

DESIGN		
INT.	DATE	REASON

PLOTS & CHECKS		
INT.	DATE	REASON

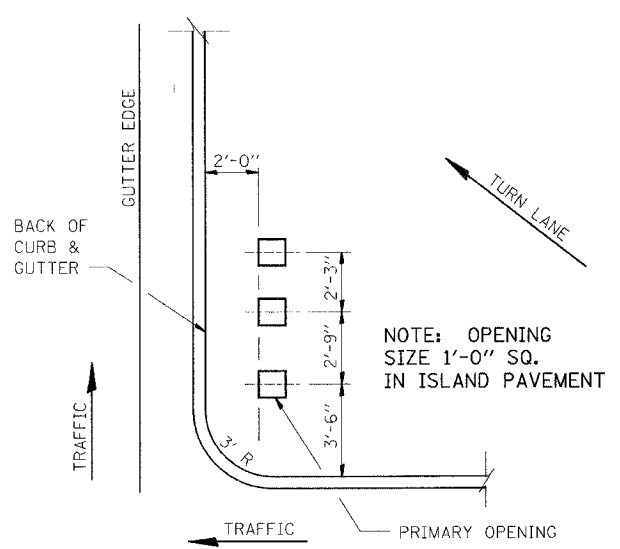
FILE NAME = \$PLOT\$  
 PLOT SCALE = \$SCALE\$  
 PLOT DATE = \$DATE\$  
 PLOT TIME = \$TIME\$  
 OPERATOR = \$USER\$

CHECKS		
INT.	DATE	REASON



**562-1**

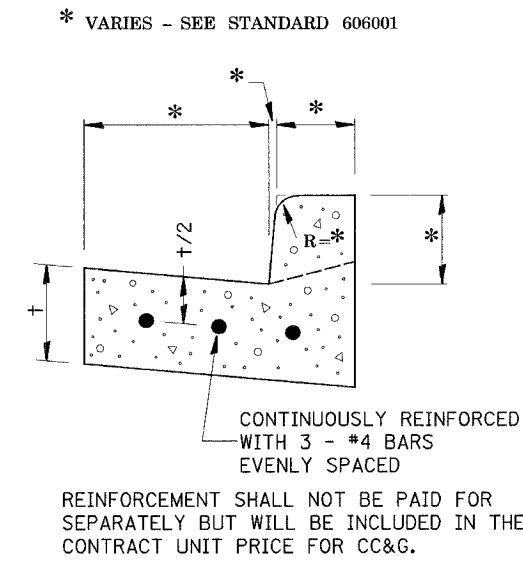
TYPICAL  
TAP SERVICE  
PIPING (COPPER)



**ISLAND SIGN POST SPACING DETAIL**

NOTE: THE ENGINEER SHALL DETERMINE THE NUMBER OF OPENINGS REQUIRED.

606-2



**REINFORCEMENT DETAIL  
FOR  
COMBINATION CONCRETE  
CURB AND GUTTER**

606-4

REVISIONS	
NAME	DATE

ILLINOIS DEPARTMENT OF TRANSPORTATION

**DETAILS**

FAU 6108 (IL. RTE. 351)  
SECTION (70XN & TS-1)  
LASALLE COUNTY

SCALE: VERT.  
HORIZ.  
DATE: 06/06/03

DRAWN BY: MABUS  
DESIGNED BY: BOTT  
CHECKED BY: COLBROOK

GREENE & BRADFORD, INC.  
OF SPRINGFIELD  
CONSULTING ENGINEERS  
CORPORATION  
PROFESSIONAL ENGINEERING FIRM  
REGISTERED IN ILLINOIS  
100 N. 4th St., Springfield, IL 62782-7001

COMPUTER FILE NO.  
STANDARDS-09  
PROJECT: 01194.B.N  
03/03/04-RPB