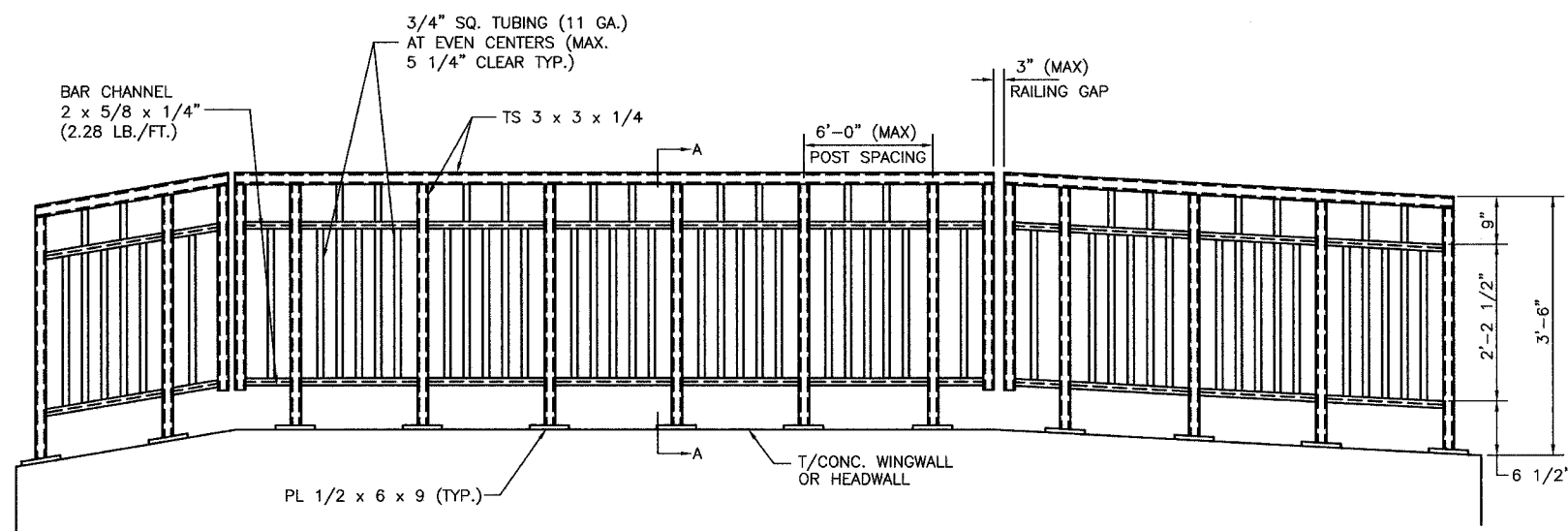


STATE NO.	SECTION	COUNTY	DATE	SHEET
**		LASALLE	13	9
FED. ROAD DIST. NO. 7	PLAN	FED. AID PROJECT	***	

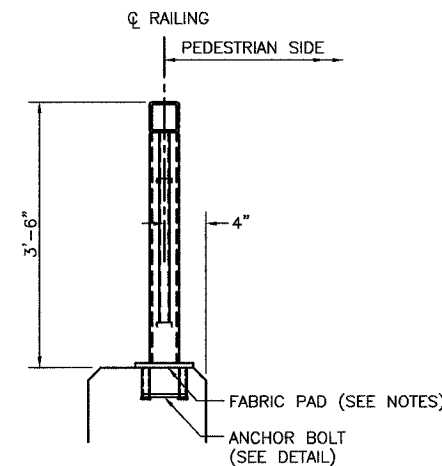
Sheet 4  
of 6 Sheets

\*\* 03-00609-00-BR  
\*\*\* BRM-5044 (9)  
CONTRACT NO. 87294

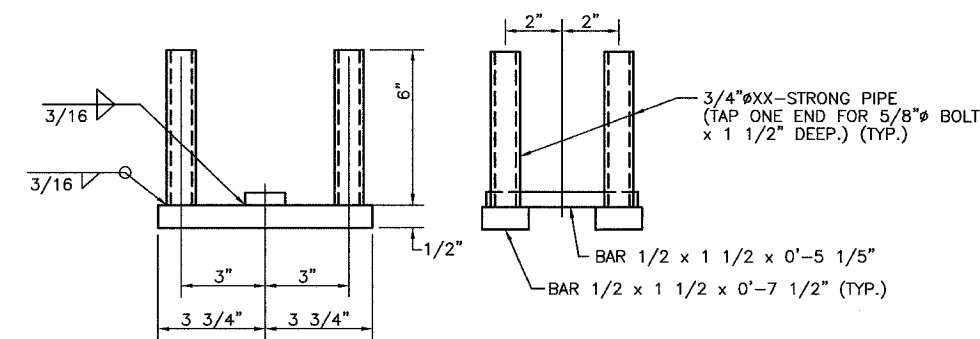


**ELEVATION VIEW ALONG ROADWAY FACE OF RAILING**

NOT TO SCALE



**SECTION A-A**



**ANCHOR BOLT DETAIL**

**NOTES**

ALL STRUCTURAL STEEL SHAPES AND PLATES SHALL CONFORM TO THE REQUIREMENTS OF AASHTO M 270 GRADE 36 EXCEPT POSTS AND ANGLES WHICH SHALL CONFORM TO AASHTO M 270, GRADE 50.

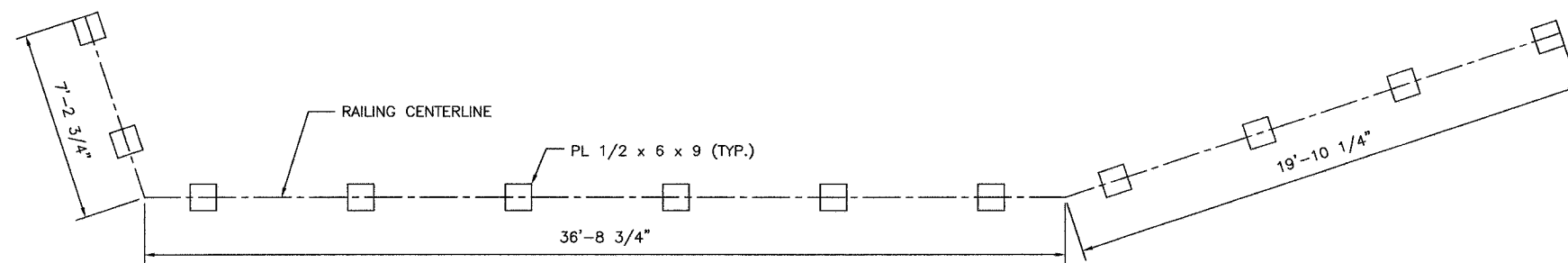
BOLTS, CAP SCREWS, NUTS, AND WASHERS SHALL CONFORM TO THE REQUIREMENTS OF ASTM DESIGNATION A 307 EXCEPT FOR HIGH STRENGTH BOLTS, NUTS AND WASHERS NOTED WHICH SHALL CONFORM TO AASHTO M 164.

ALL BOLTS, NUTS, CAP SCREWS, WASHERS AND LOCK WASHERS SHALL BE GALVANIZED ACCORDING TO AASHTO M 232.

ALL POSTS, PLATES, ANCHOR DEVICES AND ANGLES SHALL BE CLEANED AND PAINTED WITH ONE SHOP COAT OF PAINT AFTER BEING FABRICATED AND TWO FIELD COATS OF PAINT AFTER ERECTION. THE KIND AND COLOR OF PAINT SHALL BE DETERMINED BY THE ENGINEER. CLEANING AND PAINTING SHALL CONFORM TO THE REQUIREMENTS OF SECTION 506.

THE LOWER PORTION OF THE POST FLANGE IN CONTACT WITH CONCRETE SHALL RECEIVE TWO COATS OF ASPHALT PAINT CONFORMING TO SECTION 1060.07 TYPE II OR PLACE 1/8\"/>

42\"/>



**DIMENSIONAL PLAN VIEW OF RAILING**

NOT TO SCALE

PEDESTRIAN RAILING DETAILS  
3RD STREET  
OVER MENDOTA CREEK  
SECTION 03-00609-00-BR  
LASALLE COUNTY  
STA. 3+97.85  
SN 050-7015