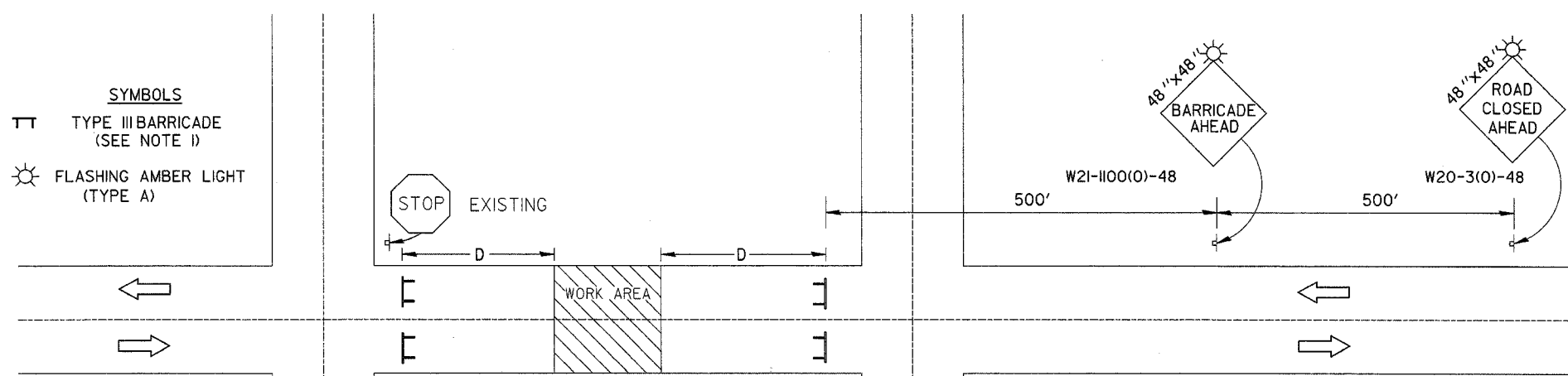


## TYPICAL APPLICATION OF TRAFFIC CONTROL DEVICES FOR ROAD CLOSURE



- SYMBOLS**
- TT TYPE III BARRICADE (SEE NOTE 1)
  - ☀ FLASHING AMBER LIGHT (TYPE A)
- EXISTING STOP

- GENERAL NOTES**
1. TYPE III BARRICADES SHALL BE AS SHOWN ON STD. 702001 "TYPICAL APPLICATIONS OF TYPE III BARRICADES CLOSING A ROAD." SIGN STD. R-II-2, 3 OR 4 SHALL BE MOUNTED ON THE BARRICADE. EACH TYPE III BARRICADE SHALL HAVE TWO FLASHING AMBER LIGHTS MOUNTED ABOVE IT.
  2. IF THE ROAD IS OPEN TO LOCAL TRAFFIC OR "D" EXCEEDS 1000', ANOTHER SET OF TYPE III BARRICADES, EQUIPPED AS IN NOTE 1 ABOVE, SHALL BE PLACED AT EACH END OF THE WORK AREA.
  3. WHEN A STOP CONDITION EXISTS, AS SHOWN ABOVE, NO SIGNS ARE REQUIRED IN ADVANCE OF THE "STOP" SIGN WHEN THE ROAD IS CLOSED WITHIN 100' OF THE INTERSECTION.

- GENERAL NOTES (CON'T)**
4. STANDARD 702001 SHALL APPLY FOR THE PLACEMENT & DESIGN OF TYPE III BARRICADES.
  5. ALL SIGNS SHALL BE POST MOUNTED IF THE CLOSURE TIME EXCEEDS FOUR DAYS.
  6. A MINIMUM OF TWO FLASHING LIGHTS SHALL BE USED AT NIGHT ON EACH APPROACH IN ADVANCE OF THE WORK AREA. FLASHING LIGHTS SHALL BE INSTALLED ABOVE THE FIRST TWO SIGNS IN THE SERIES.
  7. LONGITUDINAL DIMENSIONS MAY BE ADJUSTED SLIGHTLY TO FIT FIELD CONDITIONS.
  8. FORMS BT. 725 AND BT. 726 ARE REQUIRED.
  9. WHEN A SIDEROAD INTERSECTS THE HIGHWAY ON WHICH WORK IS BEING PERFORMED, ADDITIONAL TRAFFIC DEVICES SHALL BE ERECTED AND PROVIDED AS DIRECTED BY THE ENGINEER.

	NAME	DATE
DESIGNED	J.H.M.	8-11-87
CHECKED	P.E.K.	8-25-87
CADD NO.	F-5.03	

REVISIONS	
NAME	DATE
D.L.P.	1-17-95
D.L.P.	10-96

REVISIONS	
NAME	DATE
R.M.H.	12-97

**TYPICAL APPLICATION OF TRAFFIC CONTROL DEVICES FOR ROAD CLOSURE**  
 FAI ROUTE 72  
 SECTION 74-70HBR  
 ILLINOIS DEPT. OF TRANSPORTATION  
 DISTRICT 5  
 PIATT COUNTY  
 CUMMINS ENGINEERING CORPORATION  
 JOB #: 088  
 FILE: 088F-5.03  
 DATE: 5/14/04