

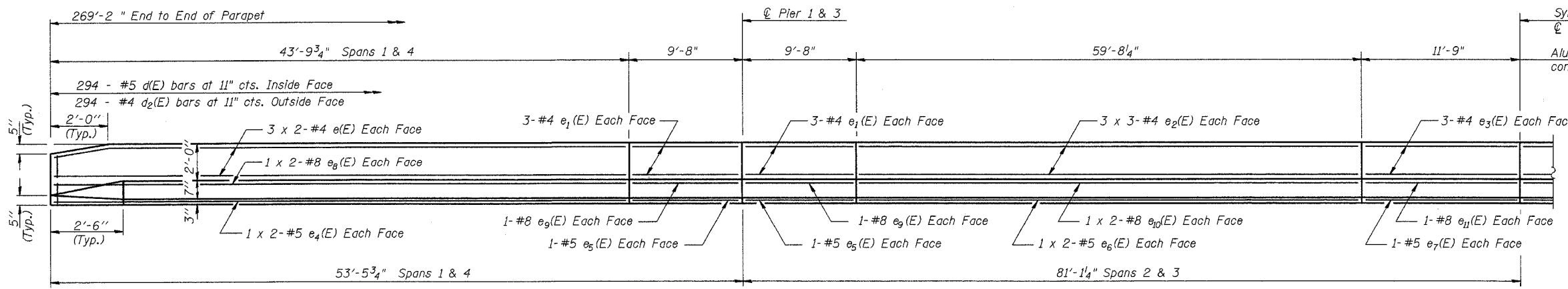
ROUTE NO.	SECTION	COUNTY	TOTAL SHEETS	SHEET NO.
F.A.I. 72	74-70HBR	PIATT	41	23
FED. ROAD DIST. NO. 5		ILLINOIS PROJECT	Sheet 7 of 20 CONTRACT #90957	

**MIN. BAR LAPS**  
 #4 Bar = 1'-8"  
 #5 Bar = 2'-2"  
 #8 Bar = 4'-6"

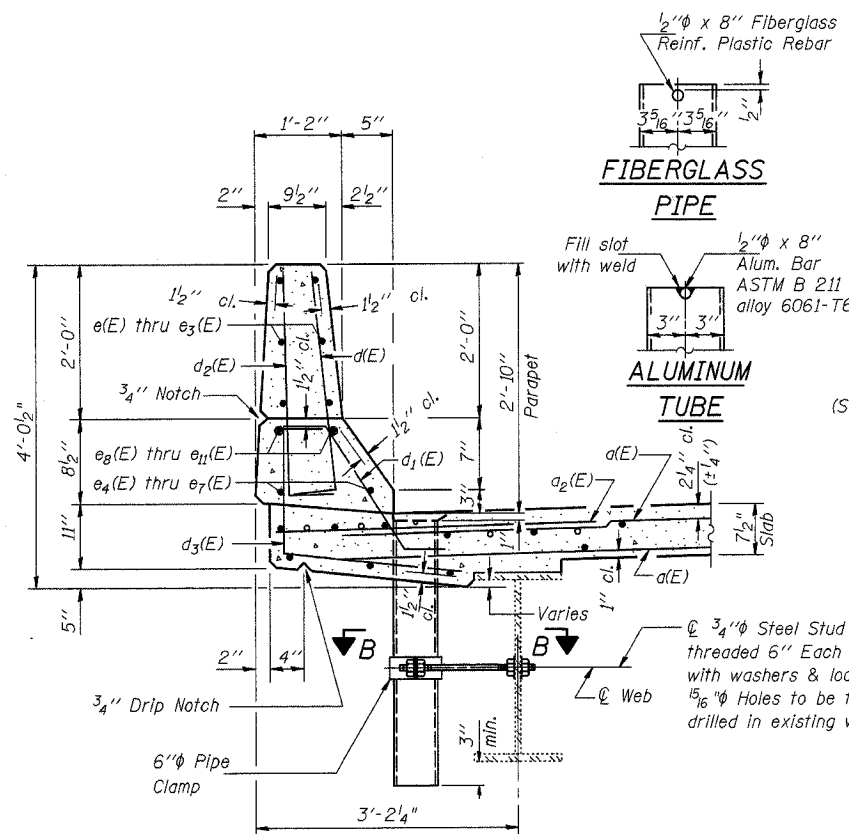
**SUPERSTRUCTURE BILL OF MATERIAL**

Bar	No.	Size	Length	Shape
a(E)	743	#5	34'-2"	—
a <sub>1</sub> (E)	4	#5	41'-2"	—
a <sub>2</sub> (E)	424	#6	4'-6"	—
a <sub>3</sub> (E)	16	#5	2'-0"	—
b(E)	312	#5	35'-4"	—
b <sub>1</sub> (E)	279	#5	31'-8"	—
b <sub>2</sub> (E)	72	#6	39'-3"	—
b <sub>3</sub> (E)	36	#6	47'-2"	—
d(E)	588	#5	3'-0"	—
d <sub>1</sub> (E)	576	#5	2'-5"	—
d <sub>2</sub> (E)	588	#4	3'-0"	—
d <sub>3</sub> (E)	588	#4	3'-11"	—
d <sub>4</sub> (E)	12	#5	2'-5"	—
e(E)	48	#4	22'-7"	—
e <sub>1</sub> (E)	48	#4	9'-4"	—
e <sub>2</sub> (E)	72	#4	20'-11"	—
e <sub>3</sub> (E)	24	#4	11'-5"	—
e <sub>4</sub> (E)	16	#5	22'-10"	—
e <sub>5</sub> (E)	16	#5	9'-4"	—
e <sub>6</sub> (E)	16	#5	30'-9"	—
e <sub>7</sub> (E)	8	#5	11'-5"	—
e <sub>8</sub> (E)	16	#8	24'-0"	—
e <sub>9</sub> (E)	16	#8	9'-4"	—
e <sub>10</sub> (E)	16	#8	32'-0"	—
e <sub>11</sub> (E)	8	#8	11'-5"	—
m(E)	20	#6	42'-6"	—
m <sub>1</sub> (E)	24	#6	9'-5"	—
m <sub>2</sub> (E)	20	#6	6'-8"	—
m <sub>3</sub> (E)	8	#6	3'-2"	—
s(E)	144	#5	8'-3"	—
s <sub>1</sub> (E)	72	#5	8'-1"	—
u(E)	86	#5	3'-9"	—
v(E)	68	#5	3'-6"	—
z(E)	696	#4	4'-8"	—
Reinforcement Bars, Epoxy Coated	Pound		75940	
Concrete Superstructure	Cu. Yd.		354.7	
Bar Splicers	Each		66	
Floor Drains	Each		4	
Drainage Scupper, DS-12	Each		2	

Reinforcement bars designated (E) shall be epoxy coated.  
 Bars indicated thus 1 x 2-#5 etc. indicates 1 line of bars with 2 lengths per line.

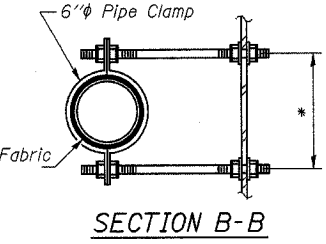


**INSIDE ELEVATION OF PARAPET**

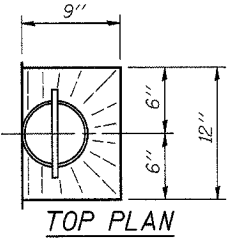


**SECTION THRU PARAPET**

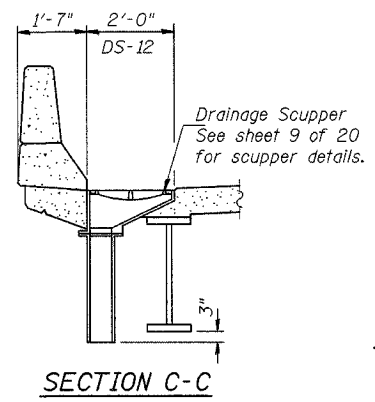
\* Dimension as required by Pipe Clamp



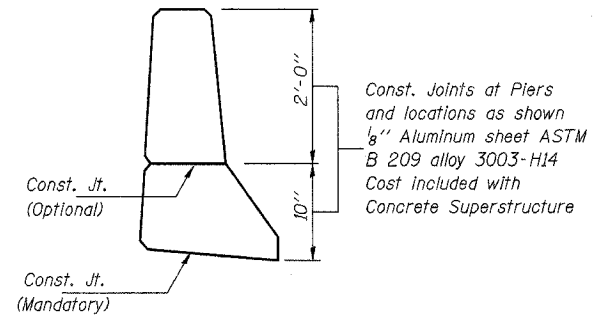
**SECTION B-B**



**TOP PLAN**

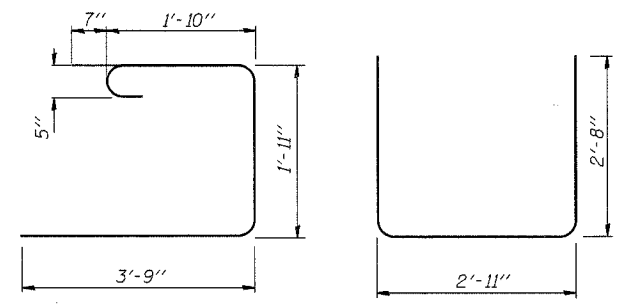


**SECTION C-C**



**PARAPET JOINT DETAILS**

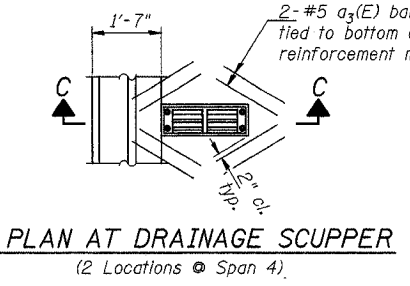
Notes:  
 The exterior surfaces of the floor drains shall be painted with the finish coat as specified in the special provisions for Cleaning and Painting New Metal Structures. The exterior surfaces of the drains shall be cleaned according to Steel Structures Painting Council's Spec. SSPC-SP1 prior to painting.  
 Fiberglass pipe shall conform to ASTM D 2996, with short-time rupture strength hoop tensile stress of 30,000 p.s.i. minimum.



**BAR s<sub>1</sub>(E)**

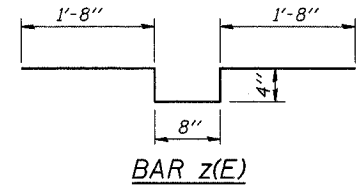
**BAR s(E)**

**BAR u(E)**



**PLAN AT DRAINAGE SCUPPER**

(2 Locations @ Span 4)



**BAR z(E)**

DESIGNED	A.J.E. & T.S.H.
CHECKED	M.D.C.
DRAWN	A.J.E. & T.S.H.
CHECKED	M.D.C.

S-1-D 9-01-03

**SUPERSTRUCTURE DETAILS**

IL ROUTE 10 OVER I-72  
 F.A.I. ROUTE 72 SECTION 74-70HBR  
 PIATT COUNTY  
 STA. 1421+61.77  
 S.N. 074-0007

CUMMINS ENGINEERING CORPORATION	
JOB #: 2088	FILE: 088SUPDET
DATE: 6/30/04	