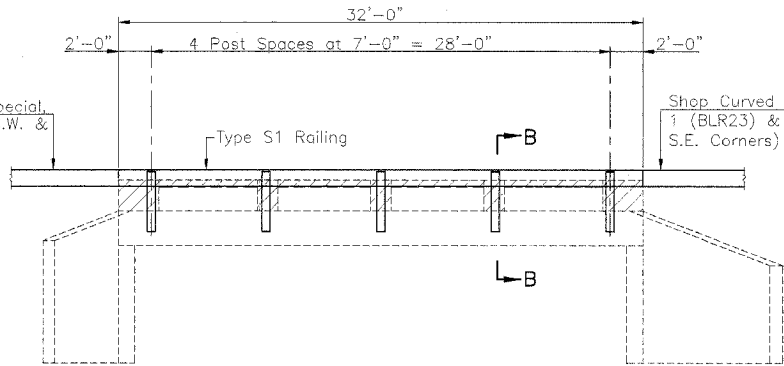


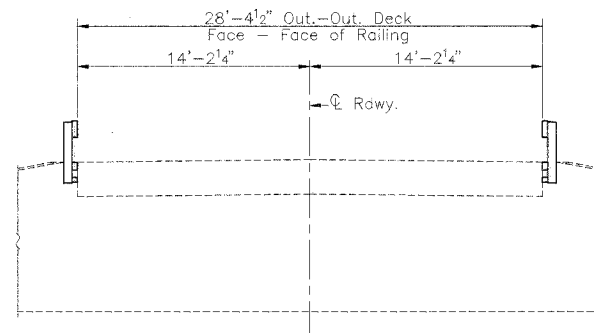
RTE.	SECTION	COUNTY	TOTAL SHEETS	SHEET NO.
C.H. 11	*	MENARD	44	6
PROJECT SR-565(110)				
* 98-00047-00-RS				

NOTES

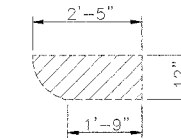
The cost of excavation necessary to place new guardrail and of the anchor bolts, expansion shells and the labor to install them shall be considered incidental to the contract unit price for "Steel Railing, Type S1." Work this sheet with Highway Standard 630101.



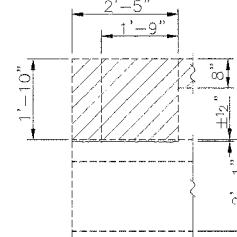
ELEVATION



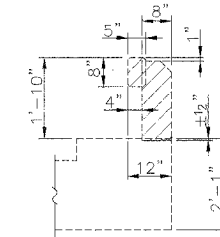
SECTION A-A



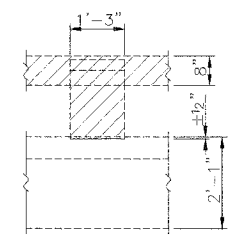
PLAN
(Existing End Post)



ELEVATION
(Existing End Post)

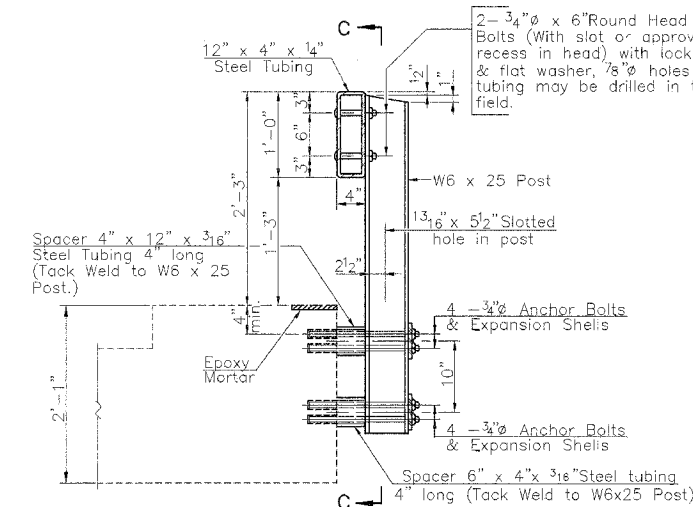


CROSS SECTION
(Existing)

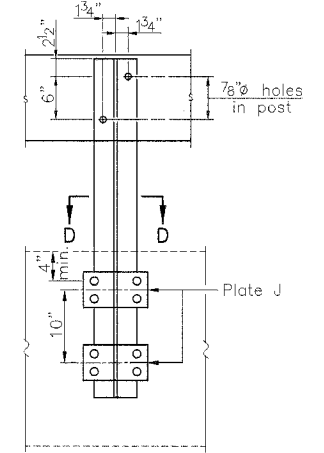


ELEVATION
(Existing Post)

Indicates Concrete Removal Area and area where Epoxy Bonding Compound shall be placed. The cost of the Epoxy Mortar shall be incidental to Concrete Removal and shall meet the requirements of Article 1025.02 of the Standard Specifications.



SECTION B-B



SECTION C-C

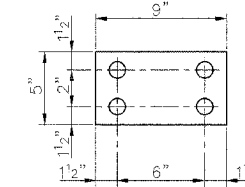
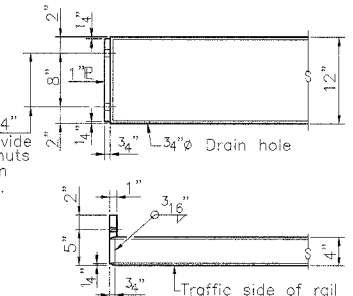
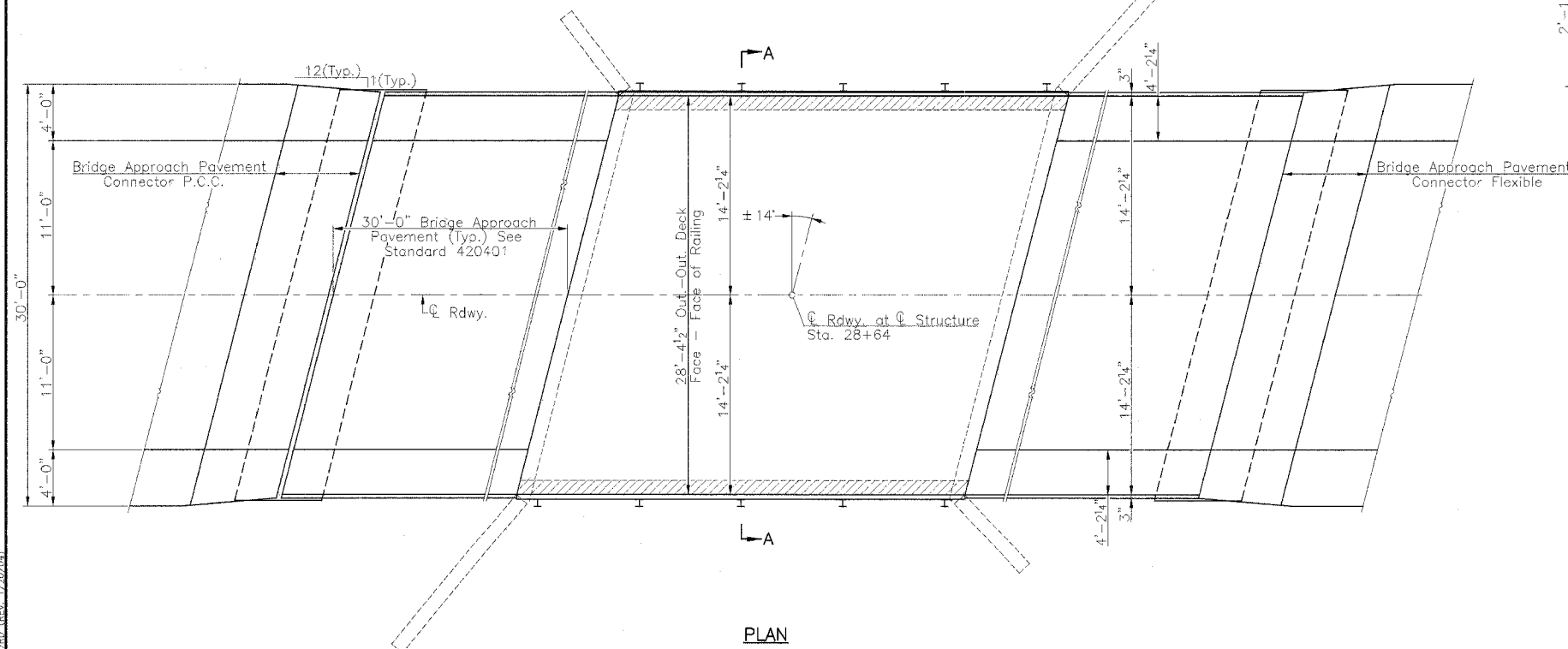


PLATE J

1 1/8" holes for 1 1/2" x 4" Round Head Bolts. Provide 2 flat washers & locknuts for guardrail connection shown on Std. 631026.



END OF RAIL DETAILS



PLAN

BILL OF MATERIAL

Item	Quantity
Steel Railing, Type S1	Foot 64
Concrete Removal	Cu. Yd. 1.4
Bridge Approach Pavement	Sq. Yd. 193
Bridge Approach Pavement Connector (P.C.C.)	Sq. Yd. 21
Bridge Approach Pavement Connector (Flexible)	Sq. Yd. 21

BRIDGE REHABILITATION DETAILS
QUARRY ROAD (C.H. 11)
SECTION 98-00047-00-RS
MENARD COUNTY