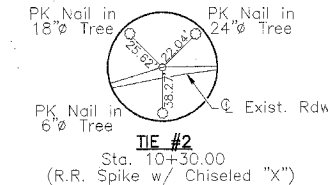
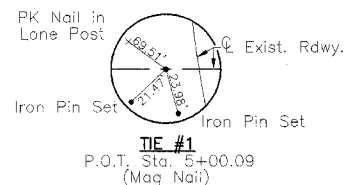


RTE.	SECTION	COUNTY	TOTAL SHEETS	SHEET NO.
C.H. 11	*	MENARD	44	14A

PROJECT SR-565(110)

* 98-00047-00-RS



PK Nail in Lone Post
Iron Pin Set

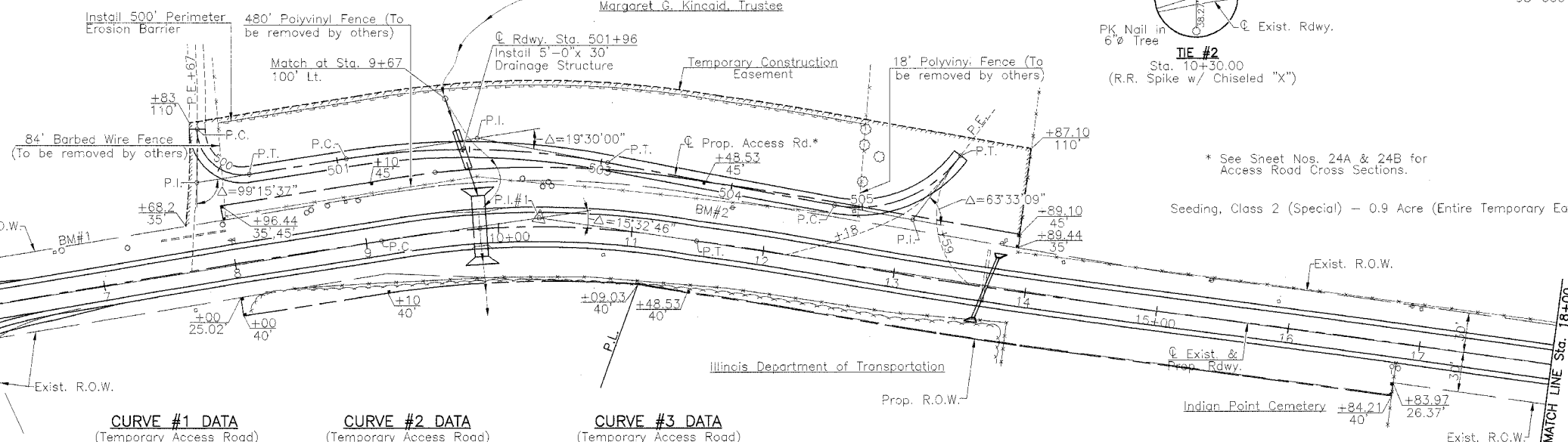
TIE #1
P.O.T. Sta. 5+00.09
(Mag Nail)

PK Nail in 18" Tree
PK Nail in 24" Tree
PK Nail in 6" Tree
TIE #2
Sta. 10+30.00
(R.R. Spike w/ Chiseled "X")

PROJECT BEGINS
Sta. 5+35.60

* See Sheet Nos. 24A & 24B for
Access Road Cross Sections.

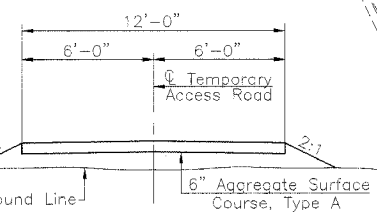
Seeding, Class 2 (Special) - 0.9 Acre (Entire Temporary Easement Area)



CURVE #1 DATA
(Temporary Access Road)
P.I. Sta. 499+94
(65Δ Lt., Sta. 7+81.5)
Δ = 99°15'37"
D = 168'29'07"
T = 40.00'
R = 34.01'
L = 58.91'
E = 18.50'
P.C. Sta. 499+74.00
P.T. Sta. 500+32.91

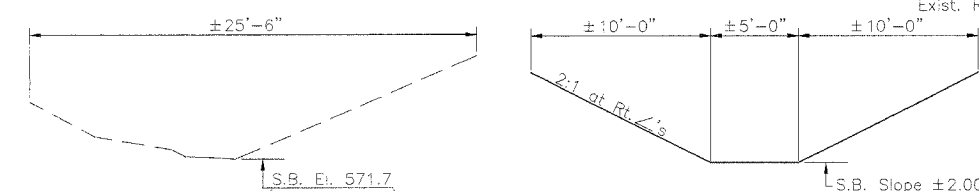
CURVE #2 DATA
(Temporary Access Road)
P.I. Sta. 502+06.91
(68.0' Lt., Sta. 9+88.3)
Δ = 19°30'00"
D = 9°50'43"
T = 100.00'
R = 581.97'
L = 198.07'
E = 8.53'
P.C. Sta. 501+06.91
P.T. Sta. 503+04.98

CURVE #3 DATA
(Temporary Access Road)
P.I. Sta. 505+38.98
(42.1' Lt., Sta. 13+07.2)
Δ = 63°33'09"
D = 59°09'12"
T = 60.00'
R = 96.86'
L = 107.44'
E = 17.08'
P.C. Sta. 504+78.98
P.T. Sta. 505+86.42



CROSS SECTION

(Proposed Temporary Access Road)



EXISTING CHANNEL SECTION

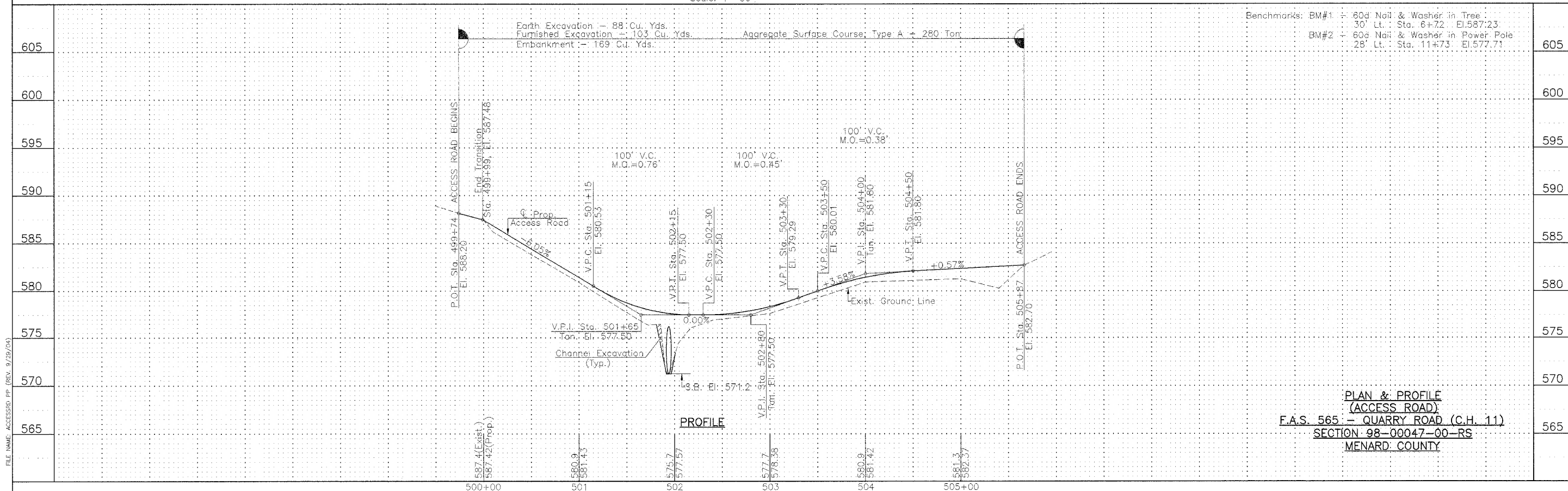
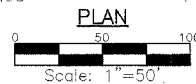
(Looking Upstream)
Match at Sta. 9+67 100' Lt.

PROPOSED CHANNEL SECTION

(Looking Upstream)

UTILITIES

Ameritech
555 E. Cook Street
Springfield, Illinois 62703
217-753-2973
Ameren CIPS
700 Jersey Street
Quincy, Illinois 62306
217-221-0806



PLAN & PROFILE
(ACCESS ROAD)
F.A.S. 565 - QUARRY ROAD (C.H. 11)
SECTION 98-00047-00-RS
MENARD COUNTY