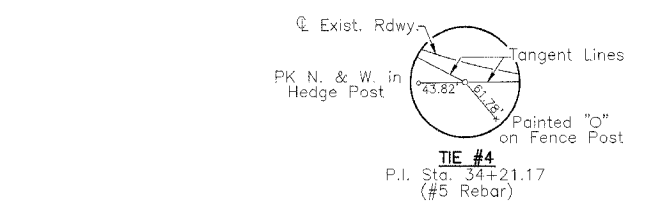


RTE.	SECTION	COUNTY	TOTAL SHEETS	SHEET NO.
C.H. 11	*	MENARD	44	16
PROJECT SR-565(110)				
* 98-00047-00-RS				

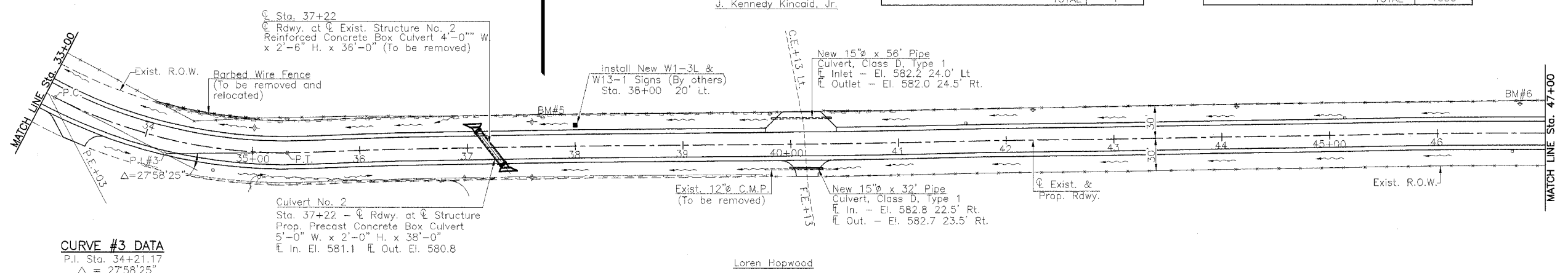


SCHEDULE TEMPORARY DITCH CHECKS

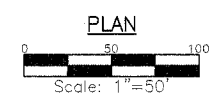
LOCATION	QUANTITY EACH
Sta. 35+00 Lt.	1
Sta. 37+00 Rt.	1
Sta. 37+60 Lt. & Rt.	2
TOTAL	4

SCHEDULE PERIMETER EROSION BARRIER

LOCATION	QUANTITY EACH
Sta. 34+00 to Sta. 39+80 Lt. & Rt.	1080
TOTAL	1080



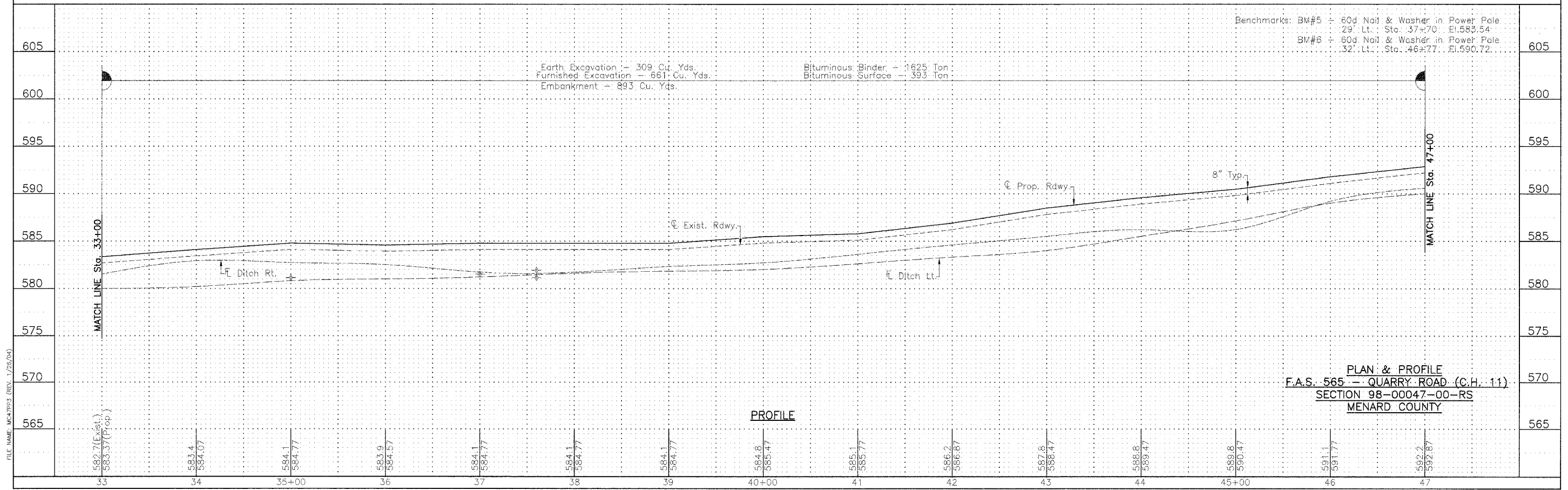
CURVE #3 DATA
 P.I. Sta. 34+21.17
 $\Delta = 27^\circ 58' 25''$
 $D = 12' 31.07''$
 $T = 114.00'$
 $R = 457.68'$
 $L = 223.45'$
 $E = 13.98'$
 P.C. Sta. 33+07.17
 P.T. Sta. 35+30.62
 $S.E. = 0.08'$
 S.E. Attained: Sta. 32+83.67(Flat) to Sta. 33+69.67
 Sta. 34+88.95 to Sta. 36+13.95



Tree Removal - Sta. 35+00 22' Rt. to Sta. 36+50 30' Rt. - 0.015 Acre

UTILITIES
 Ameritech
 555 E. Cook Street
 Springfield, Illinois 62703
 217-753-2973
 Ameren CIPS
 700 Jersey Street
 Quincy, Illinois 62306
 217-221-0806

--- Indicates Perimeter Erosion Barrier
 -o- Denotes Temporary Ditch Check



FILE NAME: MCA11P33 (REV. 1/25/04)