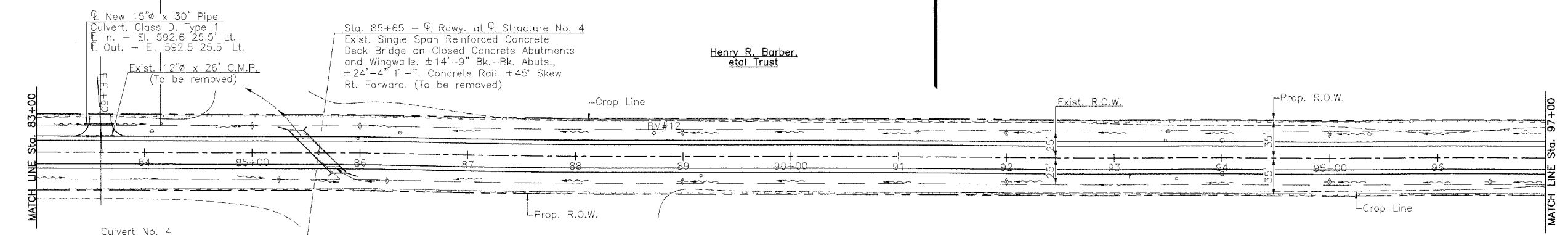


RTE.	SECTION	COUNTY	TOTAL SHEETS	SHEET NO.
C.H. 11	*	MENARD	44	20
PROJECT SR-565(110)				
* 98-00047-00-RS				

SCHEDULE PERIMETER EROSION BARRIER

LOCATION	QUANTITY EACH
Sta. 83+00 to Sta. 97+00 Lt. & Rt.	2780
TOTAL	2780

Everett A. & Susie A. Moss



☉ New 15" x 30' Pipe Culvert, Class D, Type 1
 In. - El. 592.6 25.5' Lt.
 Out. - El. 592.5 25.5' Lt.
 Exist. 12" x 26' C.M.P. (To be removed)

Sta. 85+65 - ☉ Rdwy. at ☉ Structure No. 4
 Exist. Single Span Reinforced Concrete Deck Bridge on Closed Concrete Abutments and Wingwalls. ±14'-9" Bk.-Bk. Abuts., ±24'-4" F.-F. Concrete Rail. ±45' Skew Rt. Forward. (To be removed)

Henry R. Barber et al Trust

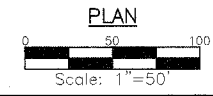
Culvert No. 4
 Sta. 85+65 - ☉ Rdwy. at ☉ Structure
 Prop. Precast Concrete Box Culvert
 10'-0" W. x 4'-0" H. x 56'-0"
 In. El. 588.3 Out. El. 588.0

SCHEDULE TEMPORARY DITCH CHECKS

LOCATION	QUANTITY EACH
Sta. 85+00 Lt.	1
Sta. 85+25 Rt.	1
Sta. 86+00 Lt.	1
Sta. 86+25 Rt.	1
Sta. 89+00 Lt. & Rt.	2
Sta. 92+00 Lt. & Rt.	2
Sta. 95+00 Lt. & Rt.	2
Sta. 96+50 Rt.	1
TOTAL	11

Wilbur Meter

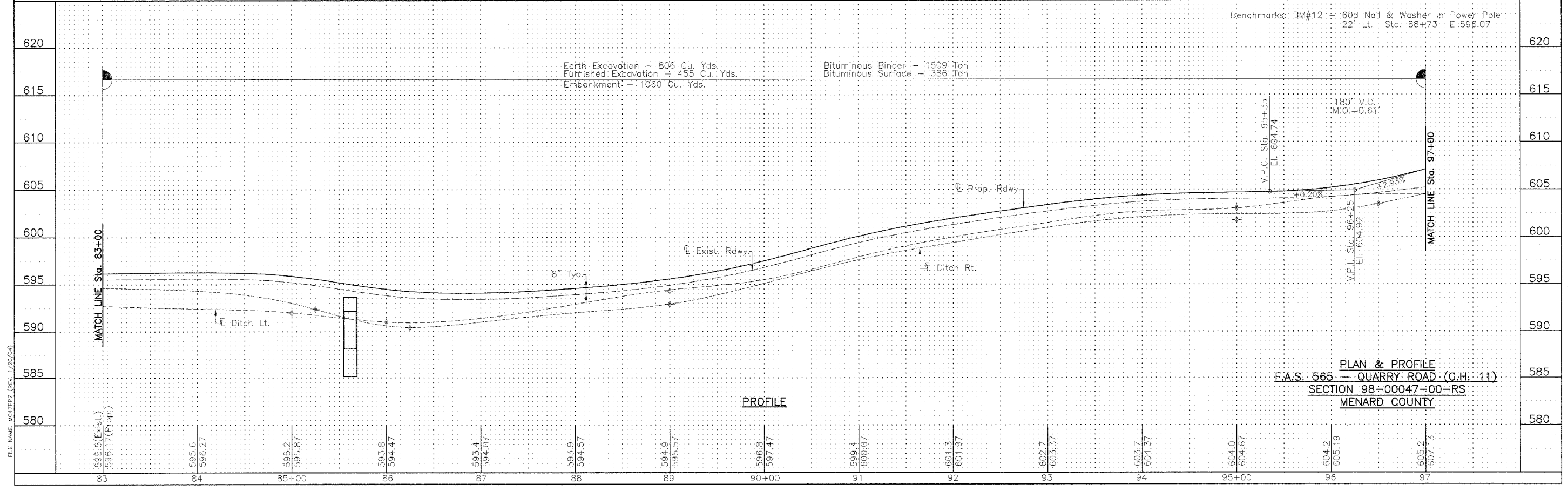
Bit. Conc. Base Cse. Widening - 10" - 1'-0" to 2'-6" Sta. 96+00 to Sta. 97+00 Rt.



--- Indicates Perimeter Erosion Barrier
 ⊕ Denotes Temporary Ditch Check

UTILITIES
 Ameritech
 555 E. Cook Street
 Springfield, Illinois 62703
 217-753-2973
 Ameren CIPS
 700 Jersey Street
 Quincy, Illinois 62306
 217-221-0806

Benchmarks: BM#12 - 60d Nail & Washer in Power Pole
 22' Lt. Sta: 88+73 El. 596.07



FILE NAME: MCA77P7 (REV. 1/20/04)