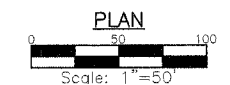
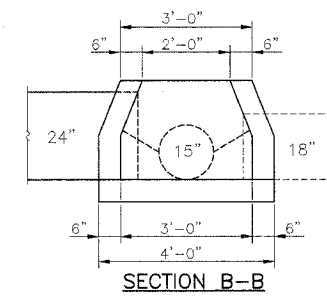
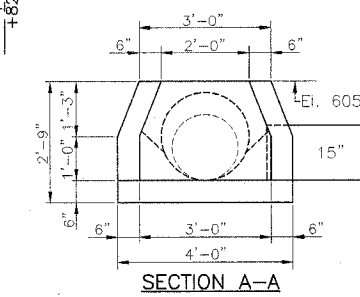
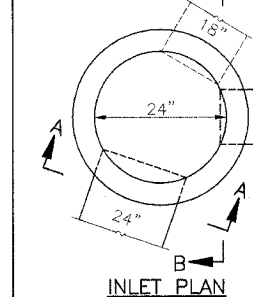
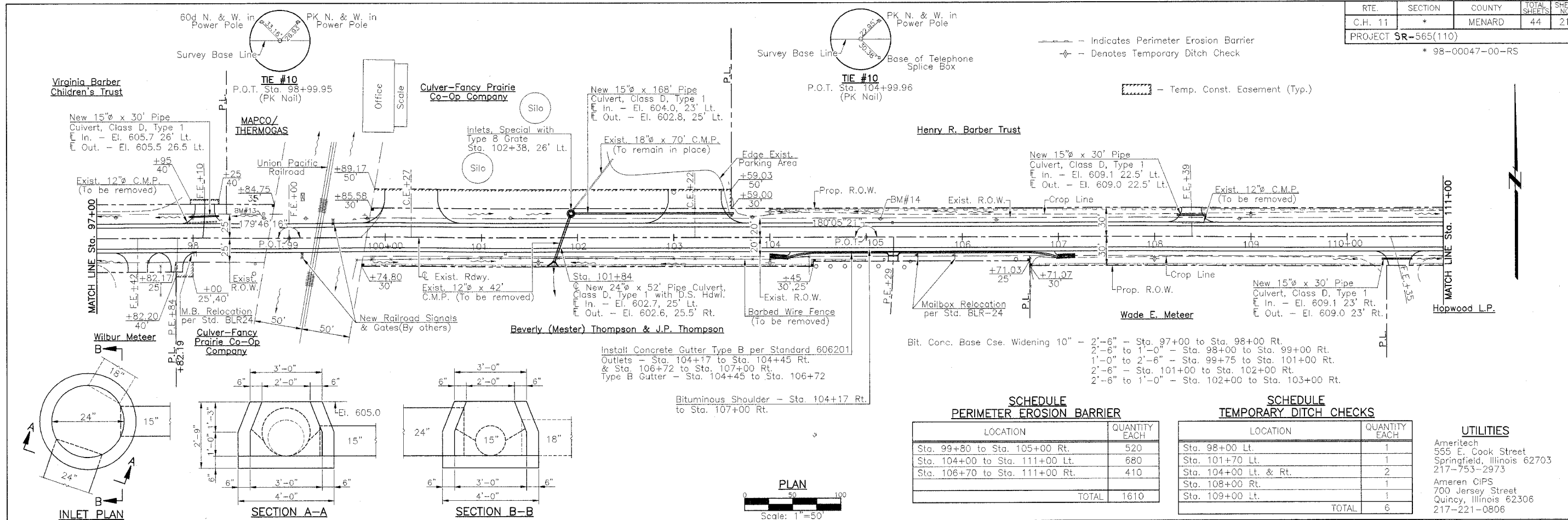


RTE.	SECTION	COUNTY	TOTAL SHEETS	SHEET NO.
C.H. 11	*	MENARD	44	21

PROJECT SR-565(110)  
\* 98-00047-00-RS



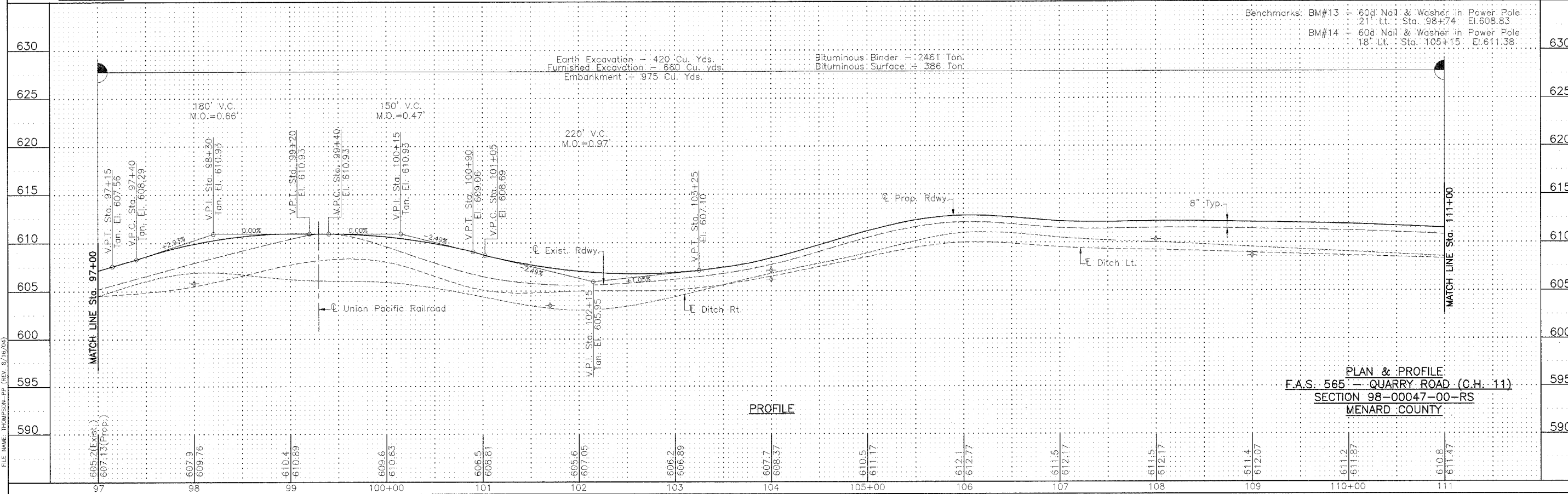
**SCHEDULE PERIMETER EROSION BARRIER**

LOCATION	QUANTITY EACH
Sta. 99+80 to Sta. 105+00 Rt.	520
Sta. 104+00 to Sta. 111+00 Lt.	680
Sta. 106+70 to Sta. 111+00 Rt.	410
<b>TOTAL</b>	<b>1610</b>

**SCHEDULE TEMPORARY DITCH CHECKS**

LOCATION	QUANTITY EACH
Sta. 98+00 Lt.	1
Sta. 101+70 Lt.	1
Sta. 104+00 Lt. & Rt.	2
Sta. 108+00 Rt.	1
Sta. 109+00 Lt.	1
<b>TOTAL</b>	<b>6</b>

**UTILITIES**  
Ameritech  
555 E. Cook Street  
Springfield, Illinois 62703  
217-753-2973  
Ameren CIPS  
700 Jersey Street  
Quincy, Illinois 62306  
217-221-0806



**PLAN & PROFILE**  
F.A.S. 565 - QUARRY ROAD (C.H. 11)  
SECTION 98-00047-00-RS  
MENARD COUNTY

FILE NAME: THOMPSON-PP (REV. 8/15/04)