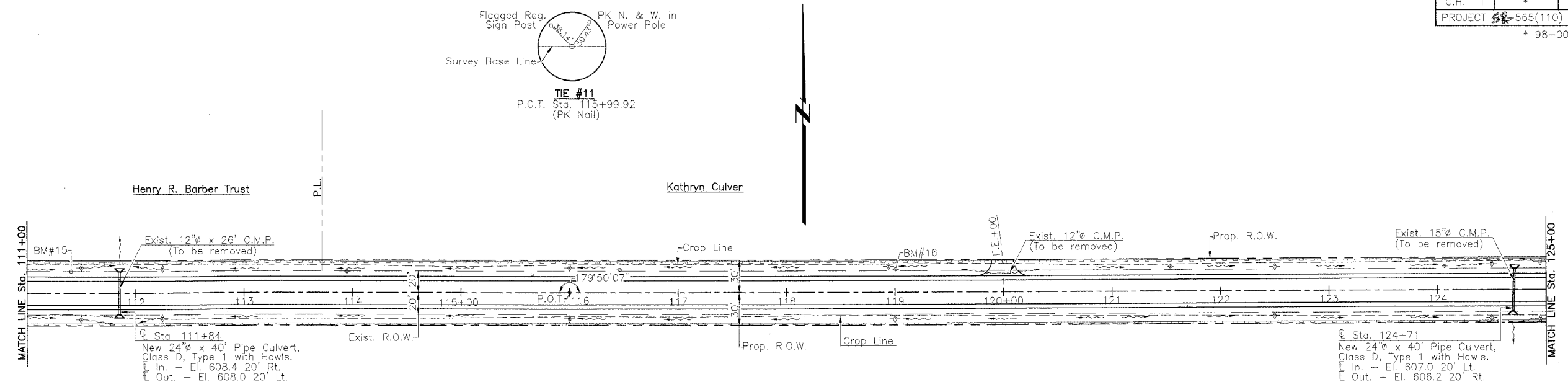


RTE.	SECTION	COUNTY	TOTAL SHEETS	SHEET NO.
C.H. 11	*	MENARD	44	22
PROJECT 565-565(110)				
* 98-00047-00-RS				



SCHEDULE PERIMETER EROSION BARRIER

LOCATION	QUANTITY FOOT
Sta. 111+00 to Sta. 125+00 Lt. & Rt.	2780
TOTAL	2780

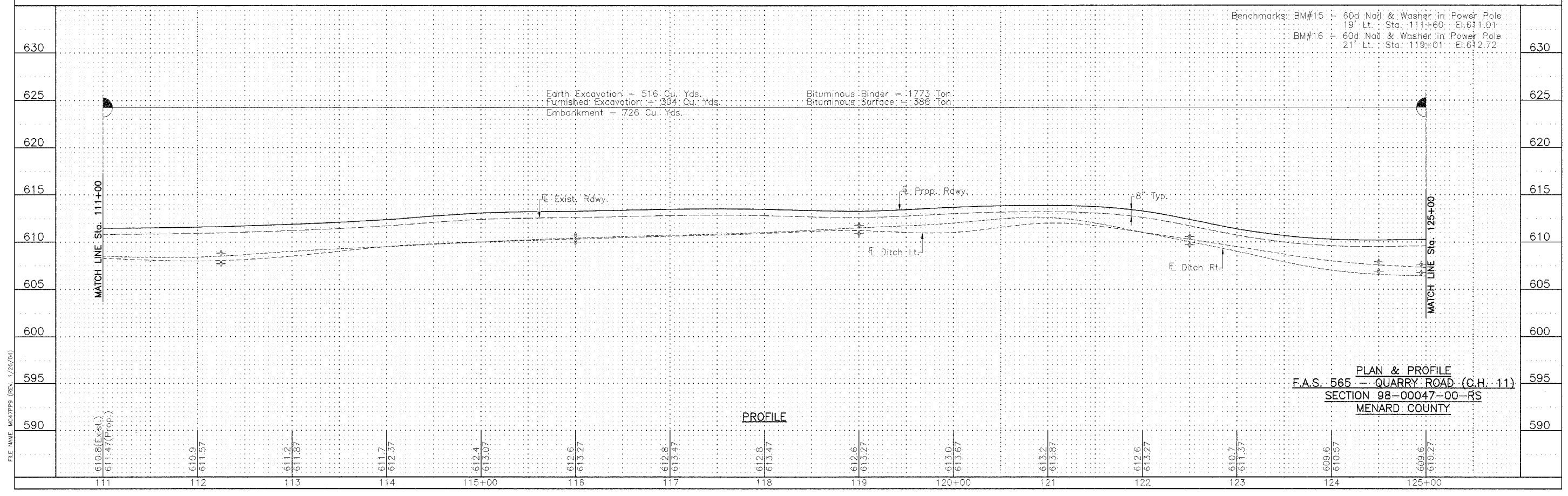
SCHEDULE TEMPORARY DITCH CHECKS

LOCATION	QUANTITY EACH
Sta. 111+50 Lt. & Rt.	2
Sta. 112+25 Lt. & Rt.	2
Sta. 116+00 Lt. & Rt.	2
Sta. 119+00 Lt. & Rt.	2
Sta. 122+50 Lt. & Rt.	2
Sta. 124+50 Lt. & Rt.	2
Sta. 125+00 Lt. & Rt.	2
TOTAL	14

UTILITIES
 Ameritech
 555 E. Cook Street
 Springfield, Illinois 62703
 217-753-2973
 Ameren CIPS
 700 Jersey Street
 Quincy, Illinois 62306
 217-221-0806



--- Indicates Perimeter Erosion Barrier
 * Denotes Temporary Ditch Check



FILE NAME: M47798 (REV. 1/26/04)

PLAN & PROFILE
F.A.S. 565 - QUARRY ROAD (C.H. 11)
SECTION 98-00047-00-RS
MENARD COUNTY