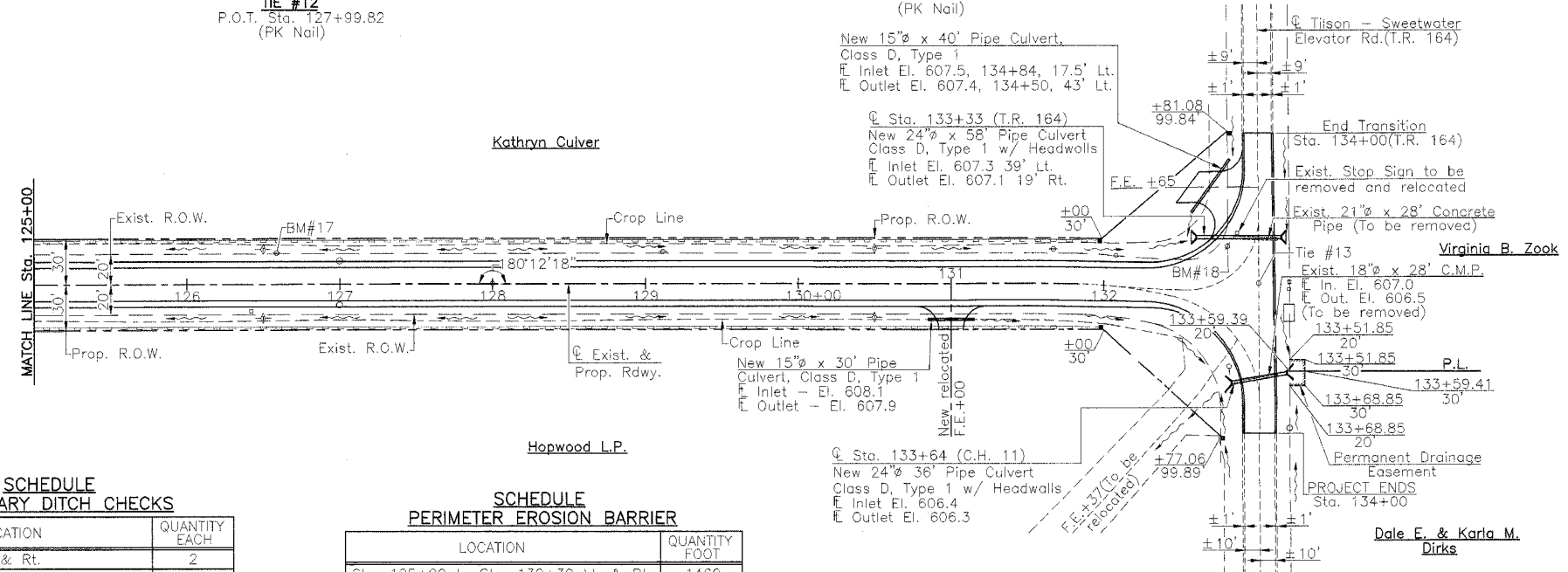
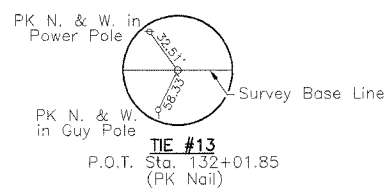
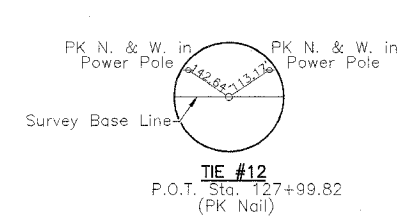


RTE.	SECTION	COUNTY	TOTAL SHEETS	SHEET NO.
C.H. 11	*	MENARD	44	23
PROJECT 98-00047-00-RS				
* 98-00047-00-RS				

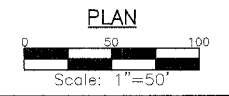


SCHEDULE TEMPORARY DITCH CHECKS

LOCATION	QUANTITY EACH
Sta. 126+50 Lt. & Rt.	2
Sta. 130+50 Lt. & Rt.	2
TOTAL	4

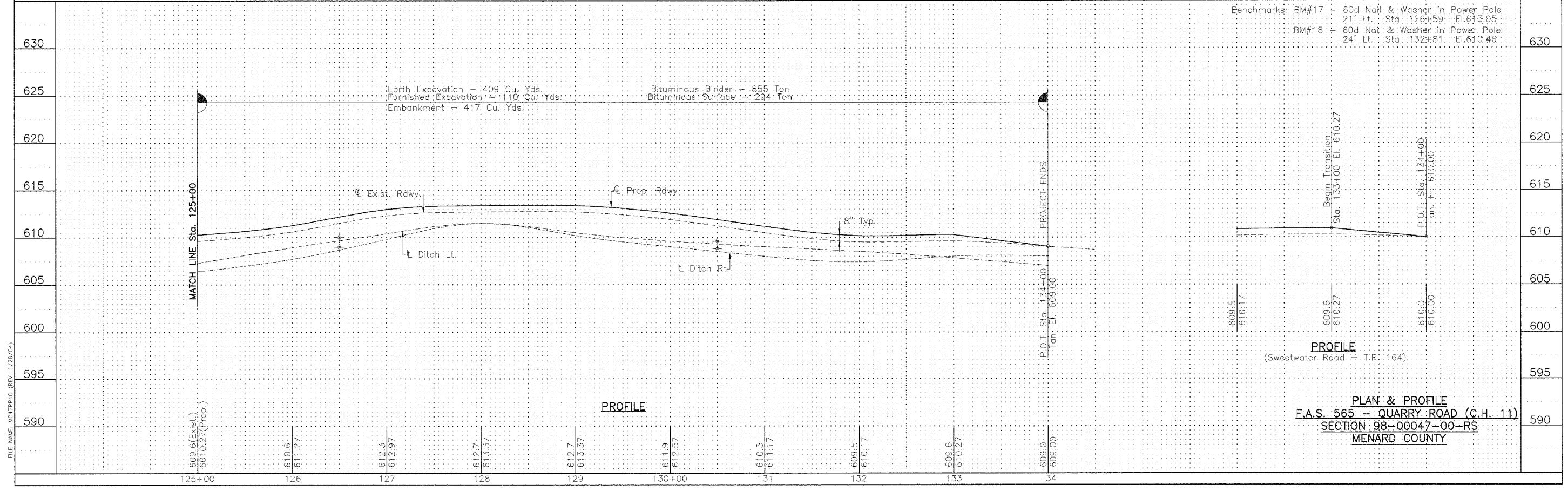
SCHEDULE PERIMETER EROSION BARRIER

LOCATION	QUANTITY FOOT
Sta. 125+00 to Sta. 132+30 Lt. & Rt.	1460
TOTAL	1460



--- Indicates Perimeter Erosion Barrier
 + Denotes Temporary Ditch Check

UTILITIES
 Ameritech
 555 E. Cook Street
 Springfield, Illinois 62703
 217-753-2973
 Ameren CIPS
 700 Jersey Street
 Quincy, Illinois 62306
 217-221-0806



Benchmarks: BM#17 : 60d Nail & Washer in Power Pole
 21' Lt. Sta. 126+59 El. 613.05
 BM#18 : 60d Nail & Washer in Power Pole
 24' Lt. Sta. 132+81 El. 610.46

PROFILE
 (Sweetwater Road - T.R. 164)

PLAN & PROFILE
F.A.S. 565 - QUARRY ROAD (C.H. 11)
SECTION 98-00047-00-RS
MENARD COUNTY

FILE NAME: M477P10 (REV. 1/28/04)