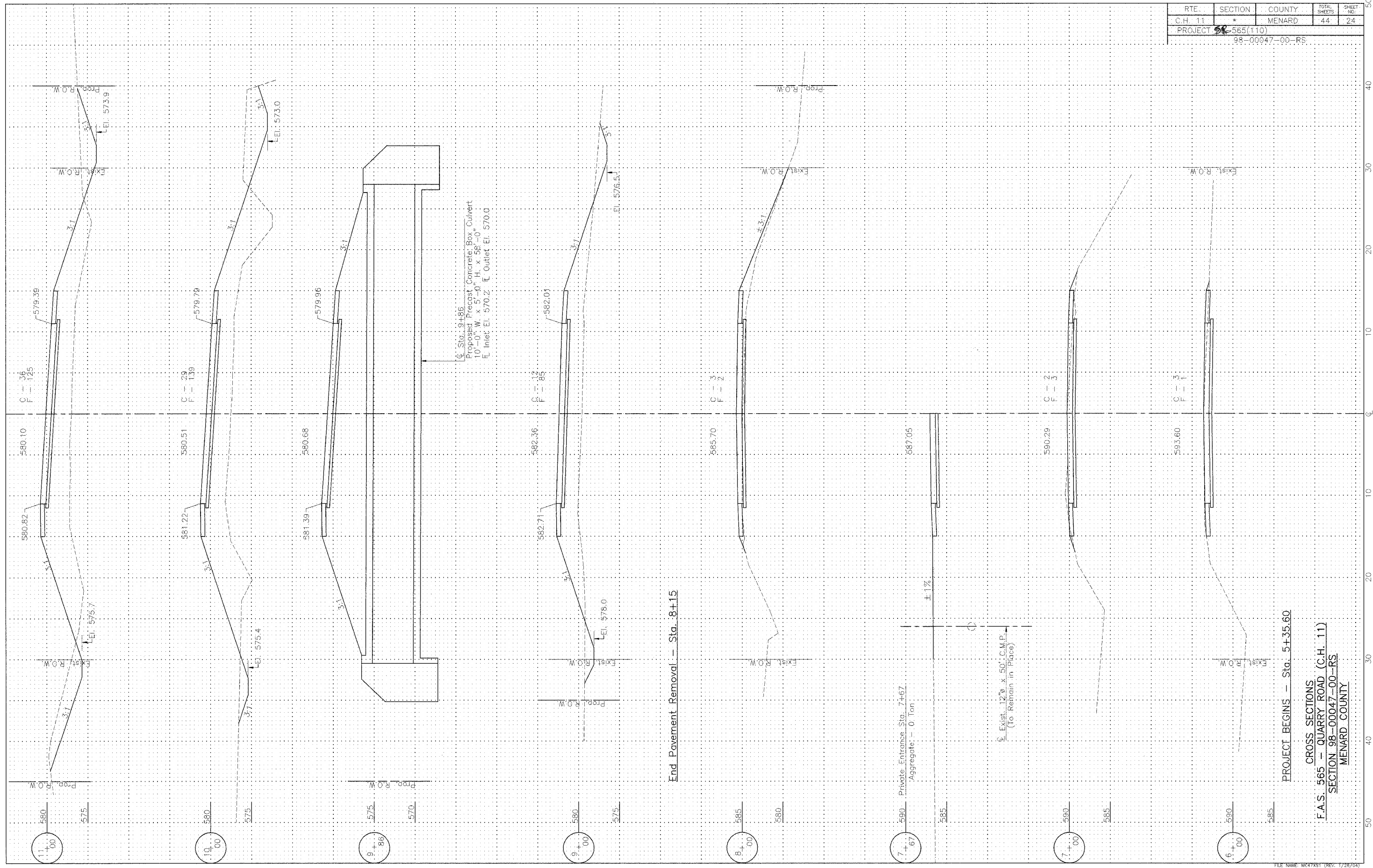


RTE.	SECTION	COUNTY	TOTAL SHEETS	SHEET NO.
C.H. 11	*	MENARD	44	24
PROJECT 54-565(110)				
98-00047-00-RS				



End Pavement Removal - Sta. 8+15

PROJECT BEGINS - Sta. 5+35.60

CROSS SECTIONS
 F.A.S. 565 - QUARRY ROAD (C.H. 11)
 SECTION 98-00047-00-RS
 MENARD COUNTY