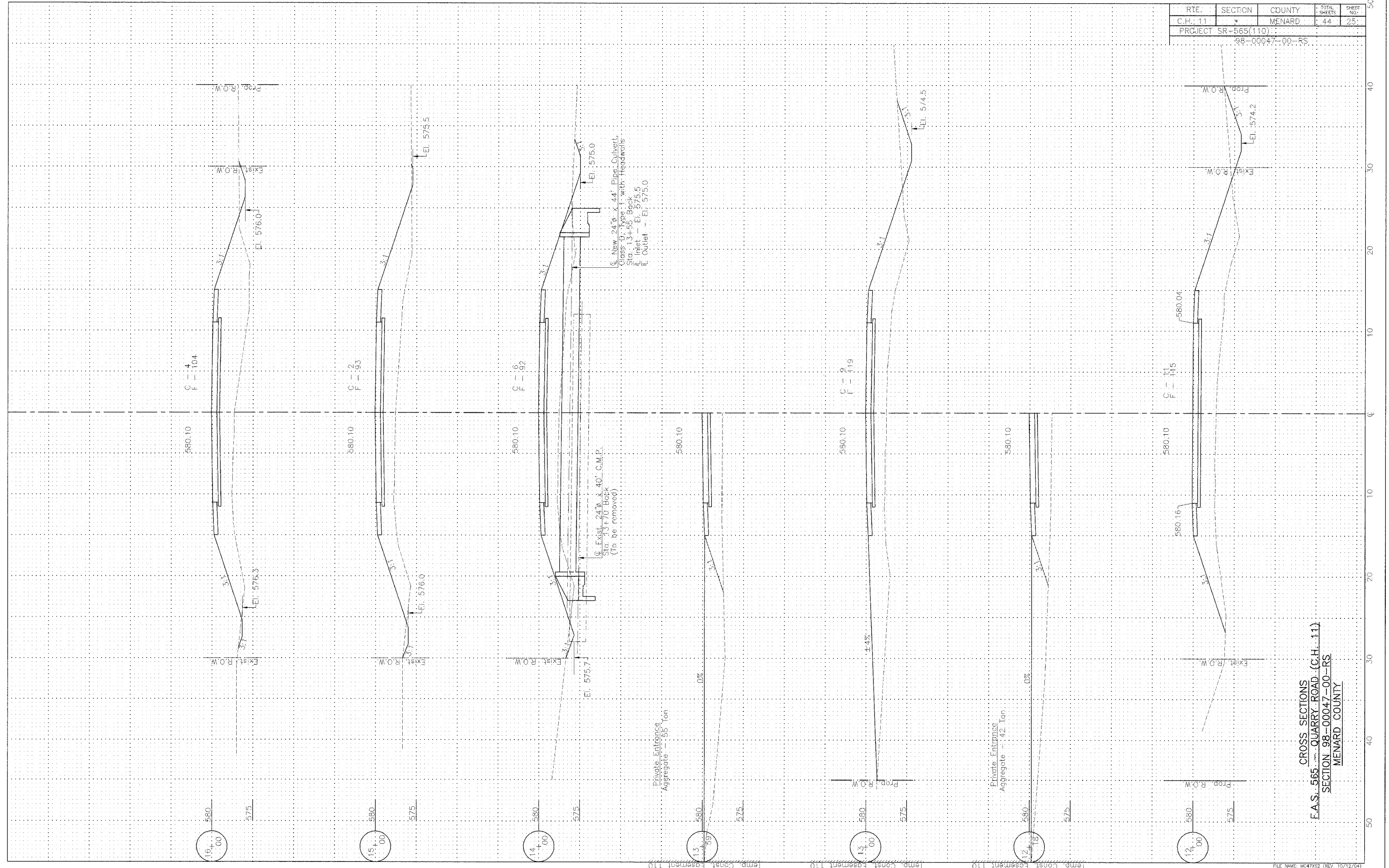


RTE.	SECTION	COUNTY	TOTAL SHEETS	SHEET NO.
C.H. 11	*	MENARD	44	25
PROJECT SR-565(110)				
98-00047-00-RS				



C New 24" x 44' Pipe Culvert,  
 Class D, Type 1, with Headwalls,  
 Sta. 13+55 Back  
 E Inlet - El. 575.5  
 E Outlet - El. 575.0

C Exist. 24" x 40' C.M.P.  
 Sta. 13+70 Back  
 (To be removed)

Private Entrance  
 Aggregate - .55 ton

Private Entrance  
 Aggregate - .42 ton

CROSS SECTIONS  
 F.A.S. 565 - QUARRY ROAD (C.H. 11)  
 SECTION 98-00047-00-RS  
 MENARD COUNTY