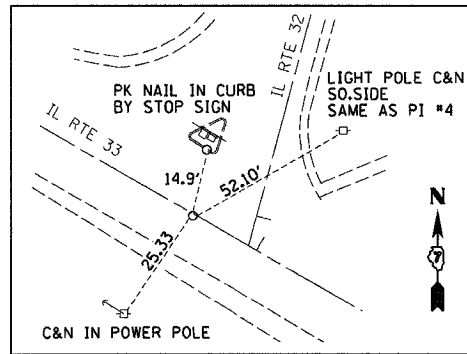
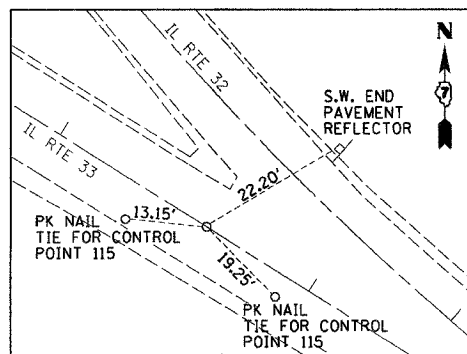


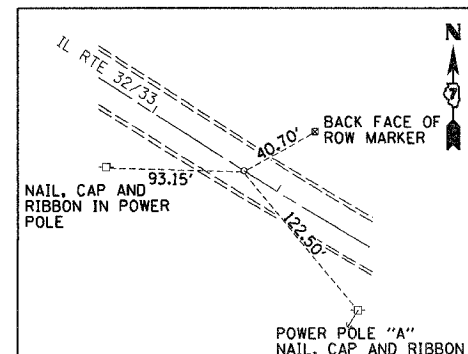
PC OF PROP. C-1 STA. 546+91.90  
(MAG NAIL)



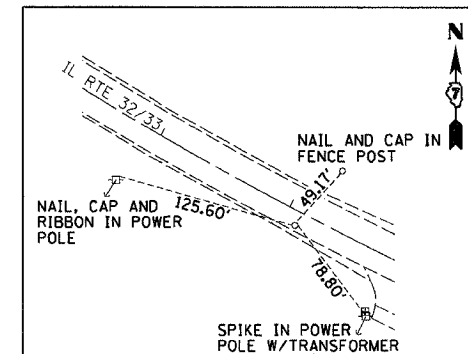
PI OF PROP. C-1 STA. 551+75.52  
(MAG NAIL)



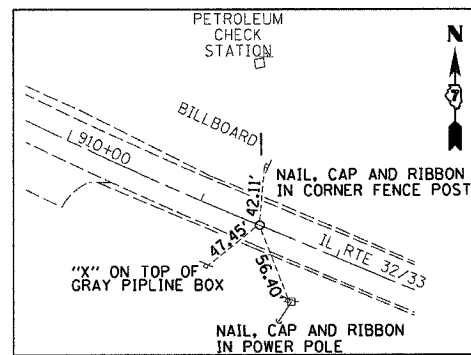
PT OF PROP. C-1 STA. 556+58.77  
(MAG NAIL)



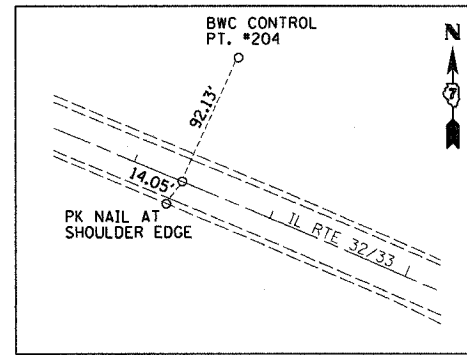
PC OF PROP. C-2 STA. 906+73.50  
(MAG NAIL)



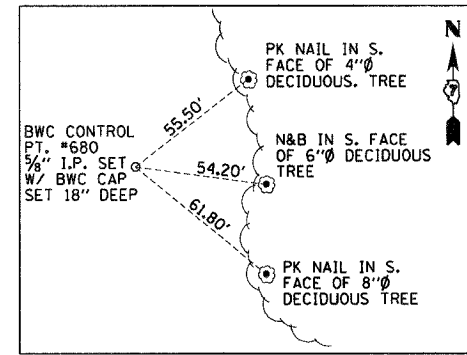
PI OF PROP. C-2 STA. 909+09.01  
(MAG NAIL)



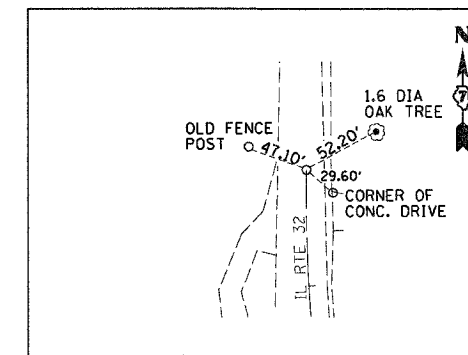
PT OF PROP. C-2 STA. 911+43.50  
(MAG NAIL)



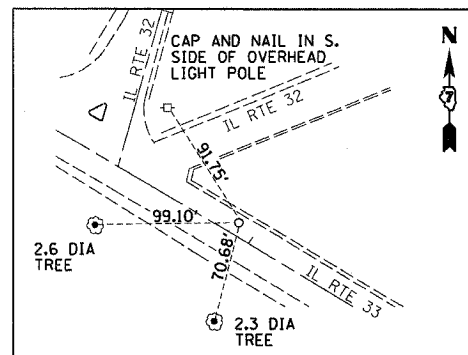
PC OF PROP. 5 STA. 988+35.24  
(MAG NAIL)



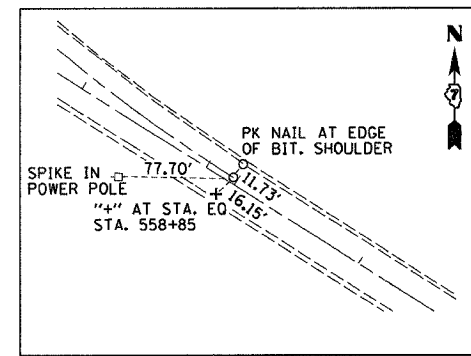
P.O.T. PROP. 5 STA. 1017+37.29 OFFSET 377.64' LT  
(MAG NAIL)



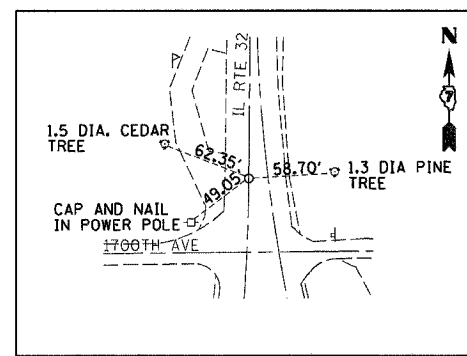
PC OF EXIST. C-4 STA. 872+20.78  
(MAG NAIL)



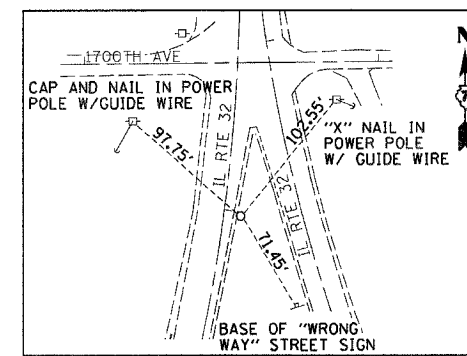
PI OF EXIST. C-4 STA. 878+53.19  
(MAG NAIL)



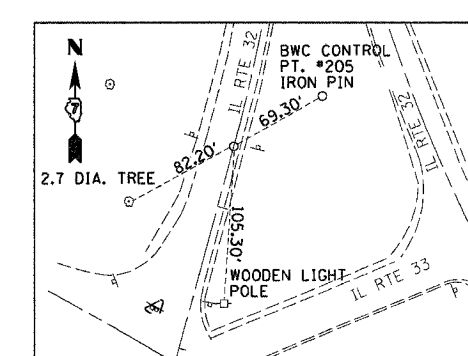
PT OF EXIST. C-4 STA. 883+73.55  
(MAG NAIL)



PC OF EXIST. C-5 STA. 51+49.94  
(MAG NAIL)



PI OF EXIST. C-5 STA. 53+04.92  
(MAG NAIL)



PT OF EXIST. C-5 STA. 54+58.16  
(MAG NAIL)

BM #P-83  
55' LT, STA. 545+22, ELEV. 611.78  
PERMANENT SURVEY MARKER

BM #5  
38' RT, STA. 933+96, ELEV. 610.82  
RR SPIKE IN POWER POLE

BM #8  
78' RT, STA. 981+01, ELEV. 600.57  
RR SPIKE IN POWER POLE

BM #12  
18' RT, STA. 1030+71, ELEV. 570.76  
CHISELED "□" BACK OF GUTTER AT  
SOUTHWEST CORNER OF DROP INLET

BM #50  
37' RT, STA. 558+53, ELEV. 615.45  
RR SPIKE IN POWER POLE

BM #53  
25' RT, STA. 940+57, ELEV. 608.01  
CHISELED "□" SOUTHEAST CORNER  
CONCRETE HEADWALL

BM #9  
121' RT, STA. 991+87, ELEV. 558.84  
CHISELED "X" IN NORTH BOLT OF FIRE  
HYDRANT AT WABASH RIVERHILLS AND  
IL RTE 32/33

BM #59  
56' LT, STA. 47+13, ELEV. 598.48  
CHISELED "□" SOUTH EDGE OF CONCRETE  
PARKING LOT OF EFFINGHAM PLAZA  
10.5' SOUTH OF PLAZA SIGN

BM #51  
98' RT, STA. 896+20, ELEV. 604.03  
CHISELED "□" AT CORNER OF CONCRETE  
PARKING LOT NEAR AMOCO GAS STATION SIGN

BM #6  
30' RT, STA. 951+33, ELEV. 606.30  
CHISELED "□" SOUTH END CONCRETE BOX CULVERT

BM #250078  
22' RT, STA. 1010+31, ELEV. 543.53  
CHISELED "□" ABOVE BRIDGE NAME PLATE

BM #4  
39' RT, STA. 914+26, ELEV. 611.19  
RR SPIKE IN POWER POLE

BM #7  
36' RT, STA. 971+17, ELEV. 606.61  
RR SPIKE IN POWER POLE

BM 250077  
22' RT, STA. 1017+17, ELEV. 543.66  
CHISELED "□" ABOVE BRIDGE NAME PLATE

BM #52  
39' RT, STA. 924+19, ELEV. 611.84  
RR SPIKE IN POWER POLE

BM #55  
45' RT, STA. 974+88, ELEV. 605.86  
PAINT MARK ON NORTH CAP BOLT OF  
FIRE HYDRANT AT LYNN ACRES ROAD AND  
IL RTE 32/33

BM #60  
79' RT, STA. 1024+86, ELEV. 548.63  
CHISELED "X" ON NORTH FLANGE BOLT  
OF FIRE HYDRANT

REVISIONS	
NAME	DATE

ILLINOIS DEPARTMENT OF TRANSPORTATION

CONTROL TIES  
AND BENCHMARKS  
SHEET 1 OF 2

DATE 5/2/02

DRAWN BY NJV  
CHECKED BY TLS