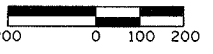
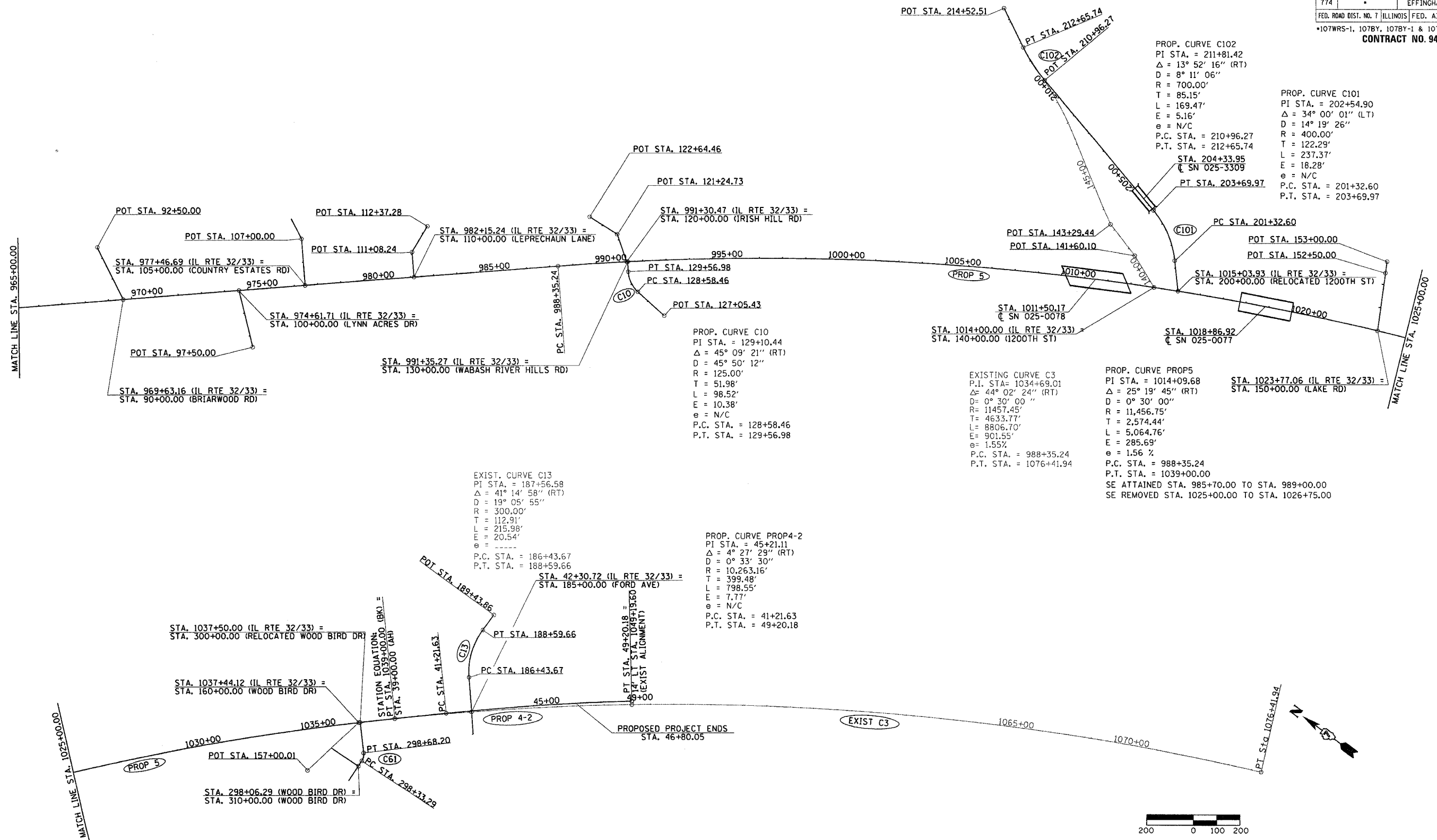


F.A.P. RTE.	SECTION	COUNTY	TOTAL SHEETS	SHEET NO.
774	*	EFFINGHAM	344	31
FED. ROAD DIST. NO. 7		ILLINOIS	FED. AID PROJECT	
*107WRS-1, 107BY, 107BY-1 & 107B-2		CONTRACT NO. 94827		



REVISIONS	
NAME	DATE

ILLINOIS DEPARTMENT OF TRANSPORTATION

HORIZONTAL ALIGNMENT PLAN  
SHEET 2 OF 2

SCALE: 1"=200'  
DATE 4/22/02

DRAWN BY NJV  
CHECKED BY BKB

PROP. CURVE C61  
PI STA. = 298+51.49  
 $\Delta = 40^\circ 00' 00''$  (LT)  
D = 114' 35' 30"  
R = 50.00'  
T = 18.20'  
L = 34.91'  
E = 3.21'  
e = N/C  
P.C. STA. = 298+33.29  
P.T. STA. = 298+68.20

EXIST. CURVE C13  
PI STA. = 187+56.58  
 $\Delta = 41^\circ 14' 58''$  (RT)  
D = 19' 05' 55"  
R = 300.00'  
T = 112.91'  
L = 215.98'  
E = 20.54'  
e = N/C  
P.C. STA. = 186+43.67  
P.T. STA. = 188+59.66

PROP. CURVE PROP4-2  
PI STA. = 45+21.11  
 $\Delta = 4^\circ 27' 29''$  (RT)  
D = 0' 33' 30"  
R = 10,263.16'  
T = 399.48'  
L = 798.55'  
E = 7.77'  
e = N/C  
P.C. STA. = 41+21.63  
P.T. STA. = 49+20.18

PROP. CURVE C10  
PI STA. = 129+10.44  
 $\Delta = 45^\circ 09' 21''$  (RT)  
D = 45' 50' 12"  
R = 125.00'  
T = 51.98'  
L = 98.52'  
E = 10.38'  
e = N/C  
P.C. STA. = 128+58.46  
P.T. STA. = 129+56.98

EXISTING CURVE C3  
P.I. STA = 1034+69.01  
 $\Delta = 44^\circ 02' 24''$  (RT)  
D = 0' 30' 00"  
R = 11457.45'  
T = 4633.77'  
L = 8806.70'  
E = 901.55'  
e = 1.55%  
P.C. STA. = 988+35.24  
P.T. STA. = 1076+41.94

PROP. CURVE C102  
PI STA. = 211+81.42  
 $\Delta = 13^\circ 52' 16''$  (RT)  
D = 8' 11' 06"  
R = 700.00'  
T = 85.15'  
L = 169.47'  
E = 5.16'  
e = N/C  
P.C. STA. = 210+96.27  
P.T. STA. = 212+65.74

PROP. CURVE C101  
PI STA. = 202+54.90  
 $\Delta = 34^\circ 00' 01''$  (LT)  
D = 14' 19' 26"  
R = 400.00'  
T = 122.29'  
L = 237.37'  
E = 18.28'  
e = N/C  
P.C. STA. = 201+32.60  
P.T. STA. = 203+69.97

PROP. CURVE PROP5  
PI STA. = 1014+09.68  
 $\Delta = 25^\circ 19' 45''$  (RT)  
D = 0' 30' 00"  
R = 11,456.75'  
T = 2,574.44'  
L = 5,064.76'  
E = 285.69'  
e = 1.56 %  
P.C. STA. = 988+35.24  
P.T. STA. = 1039+00.00  
SE ATTAINED STA. 985+70.00 TO STA. 989+00.00  
SE REMOVED STA. 1025+00.00 TO STA. 1026+75.00