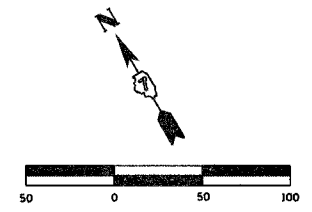


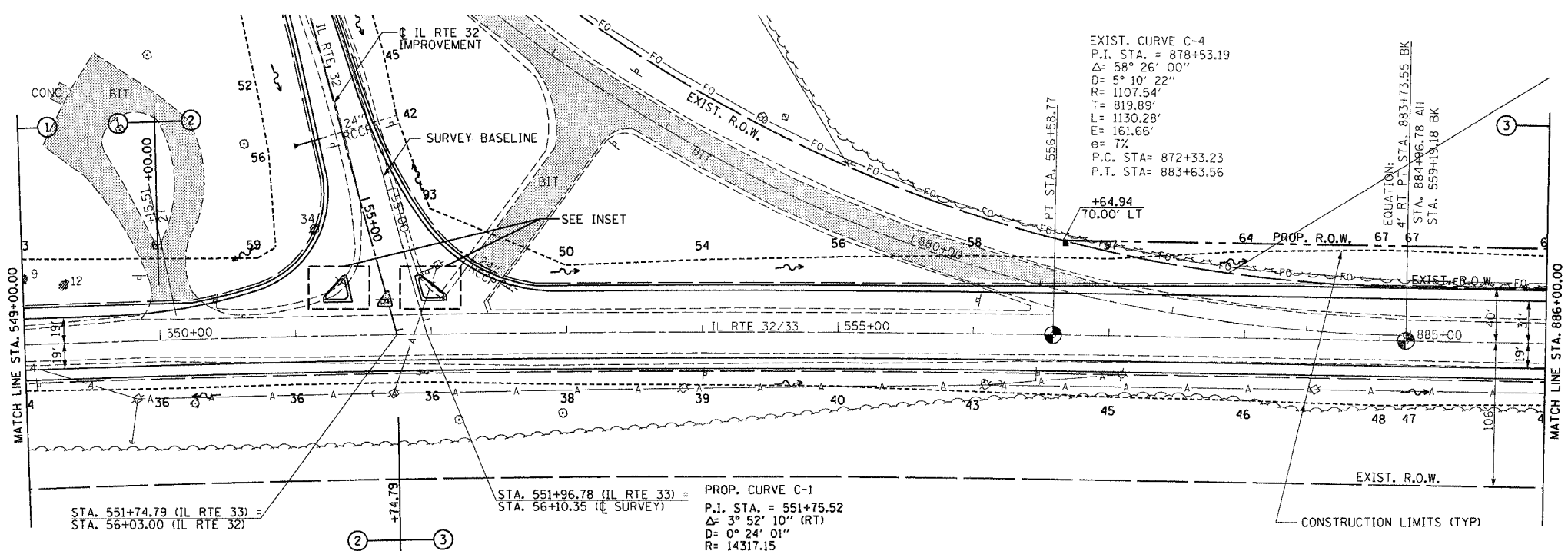
F.A.P. RTE.	SECTION	COUNTY	TOTAL SHEETS	SHEET NO.
774	*	EFFINGHAM	344	65
STA. 549+00.00 TO STA. 886+00.00				
FED. ROAD DIST. NO. 7 ILLINOIS FED. AID PROJECT				
* 107WRS-1, 107BY, 107BY-1 & 107B-2				
CONTRACT NO. 94827				

PERMANENT SURVEY MARKERS, TYPE J
 PT STA. 556+58.77 1 EACH
 STA. 884+96.78 1 EACH
 TOTAL 2 EACH



DATE	BY
DATE	BY
DATE	BY

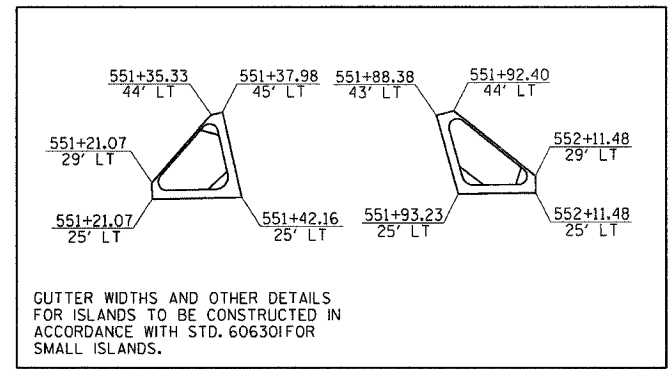
DATE	BY
DATE	BY
DATE	BY



ISLAND REMOVAL
 LT STA. 551+60.76 - STA. 551+70.27 86 SQ FT

CONCRETE MEDIAN, TYPE SM-6.24
 LT STA. 551+21.07 - STA. 551+42.16 261 SQ FT
 LT STA. 551+93.23 - STA. 552+11.48 256 SQ FT
 TOTAL 517 SQ FT

PROP. CURVE C-1
 P.I. STA. = 551+75.52
 $\Delta = 3^\circ 52' 10''$ (RT)
 $D = 0^\circ 24' 01''$
 $R = 14317.15$
 $T = 483.62'$
 $L = 966.87'$
 $E = 8.17'$
 $e = 1.56\%$
 P.C. STA = 546+91.90
 P.T. STA = 556+58.77
 SE ATTAINED STA. 547+00.00 TO STA. 549+50.00
 SE REMOVED STA. 549+50.00 TO STA. 550+00.00



GUTTER WIDTHS AND OTHER DETAILS FOR ISLANDS TO BE CONSTRUCTED IN ACCORDANCE WITH STD. 60630IFOR SMALL ISLANDS.

