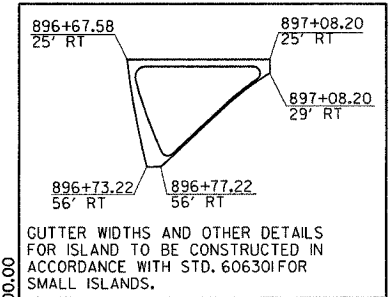
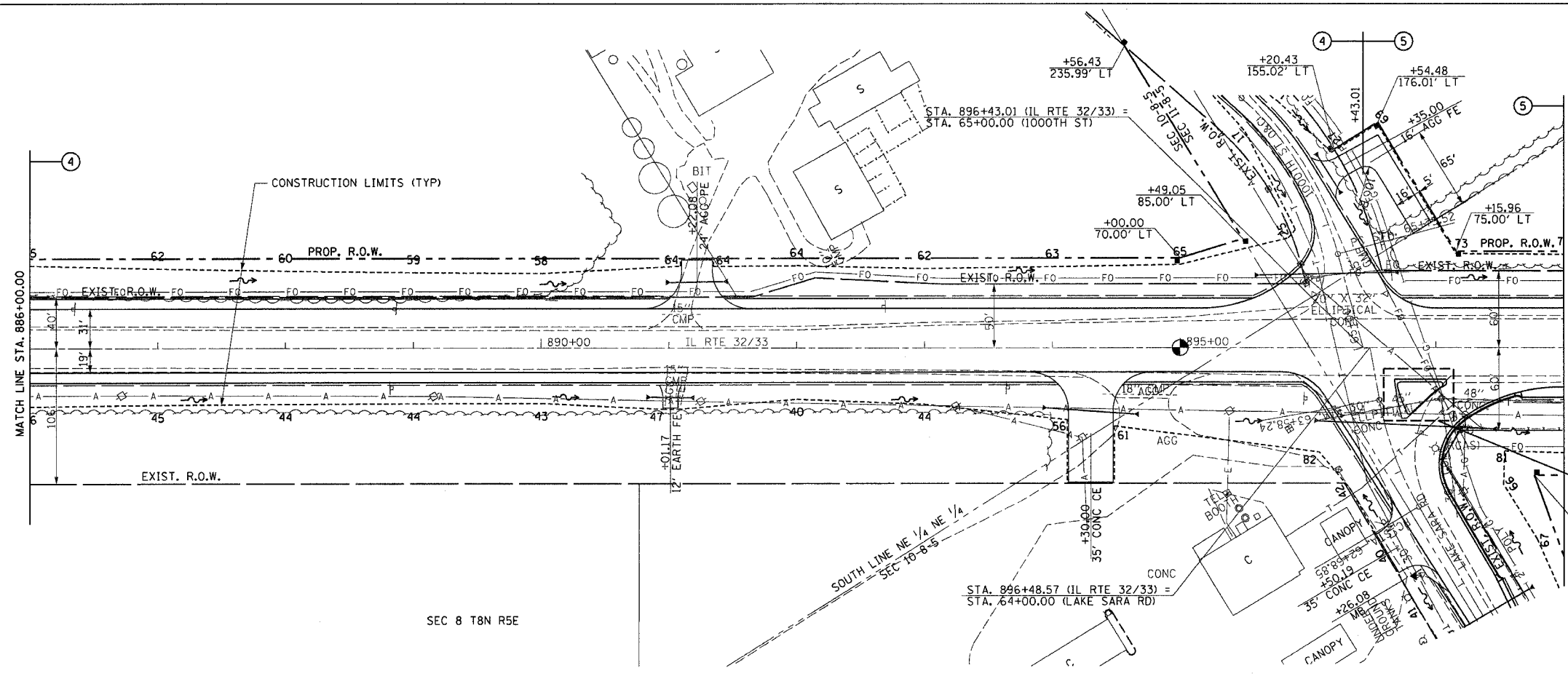


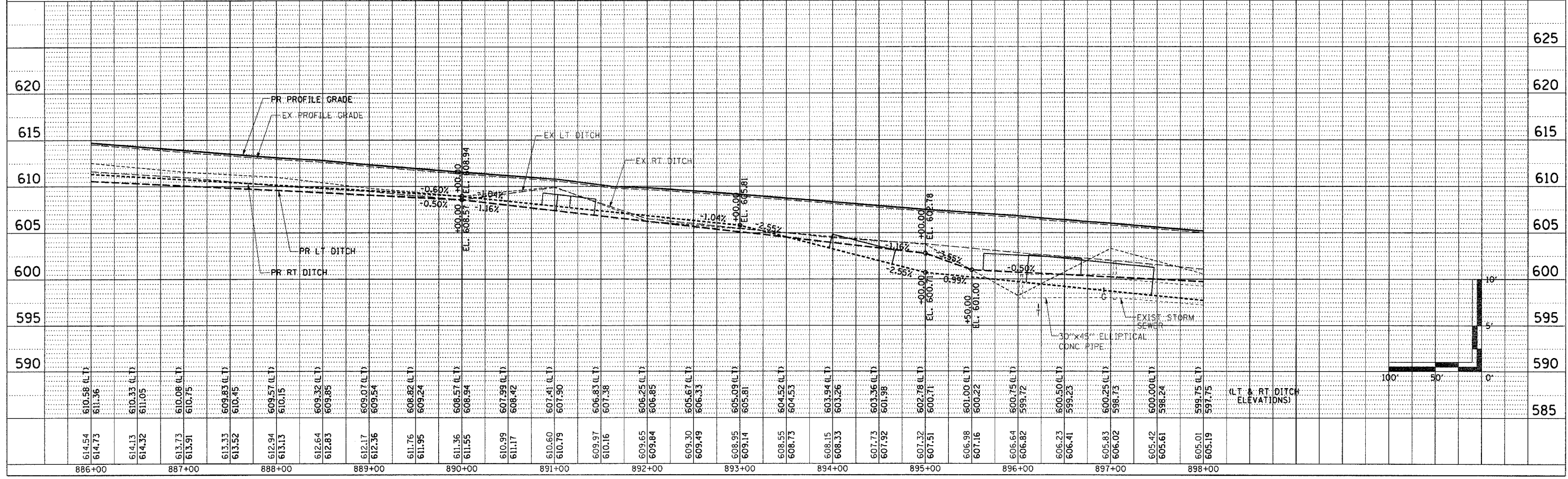
F.A.P. RTE.	SECTION	COUNTY	TOTAL SHEETS	SHEET NO.
774		EFFINGHAM	344	66
STA. 886+00.00 TO STA. 898+00.00				
FED. ROAD DIST. NO. 7 ILLINOIS FED. AID PROJECT				
• 107WRS-1, 107BY, 107BY-1 & 107B-2				
CONTRACT NO. 94827				

PLAN	DESIGNED	DATE
BY	CHECKED	
NO.	DATE	

PROFILE	DESIGNED	DATE
BY	CHECKED	
NO.	DATE	



- INSET**
- COMBINATION CONCRETE CURB AND GUTTER, TYPE B-6.24
RT STA 61+87.00 - STA. 63+35.00 192'
 - CONCRETE MEDIAN, TYPE SM-6.24
RT STA 896+67.58 - STA. 897+08.20 729 SQ FT
 - STORM SEWER REMOVAL, 36"
RT STA. 896+04.90 - STA. 897+04.22 101'
RT STA. 896+16.55 - STA. 897+04.22 94'
TOTAL 195'
 - STORM SEWER REMOVAL, 48"
RT STA. 897+04.22 - STA. 898+00.00 96'
 - REMOVING MANHOLES
RT STA. 897+04.22 1 EACH
 - PERMANENT SURVEY MARKER, TYPE 1
STA 895+00.00 1 EACH



MAIN LINE SHEET 3 OF 18