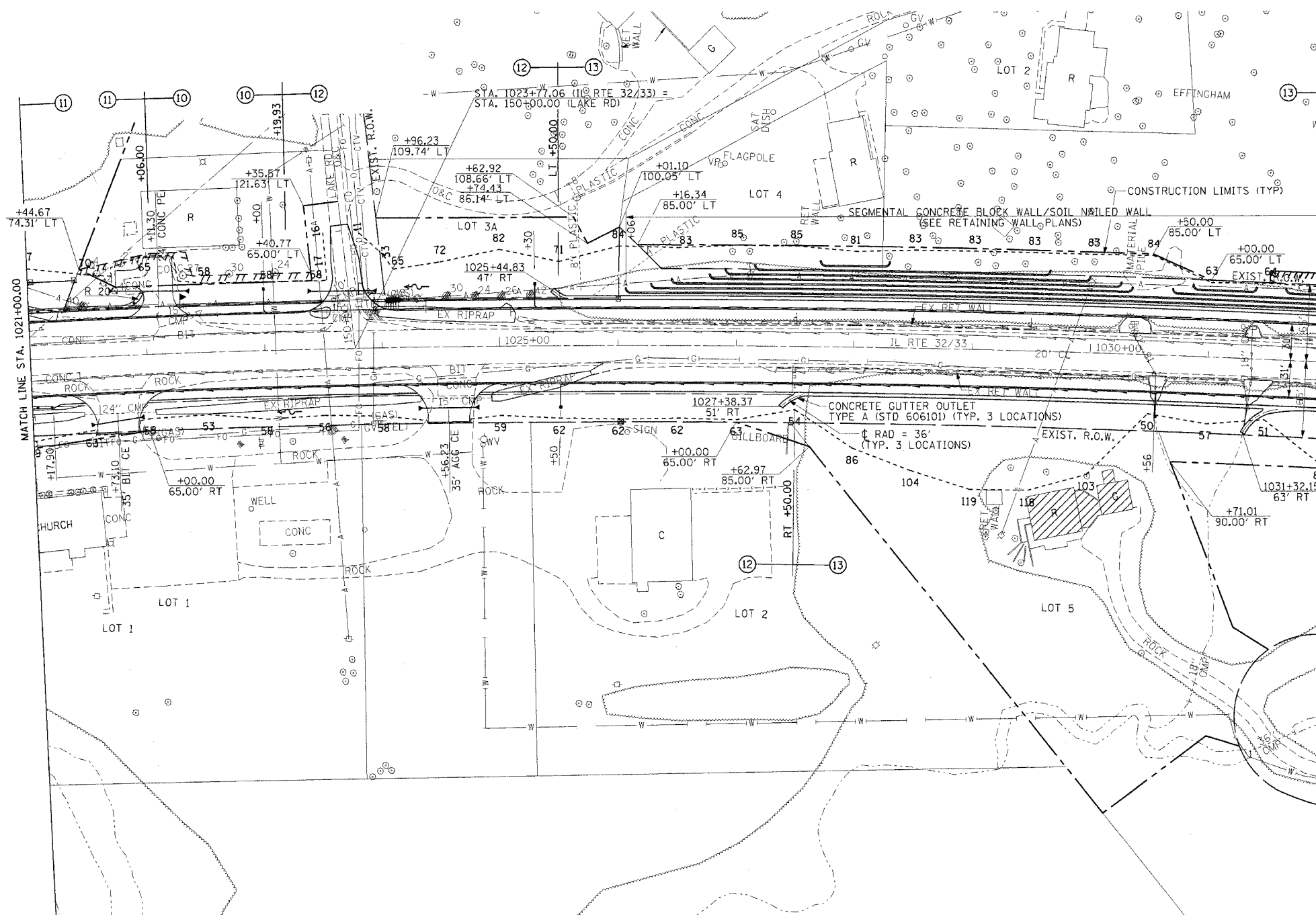


F.A.P. RTE.	SECTION	COUNTY	TOTAL SHEETS	SHEET NO.
774		EFFINGHAM	344	77
STA. 1021+00.00		TO STA. 1032+00.00		
FED. ROAD DIST. NO. 7 ILLINOIS FED. AID PROJECT				
• 107WRS-1, 107BY, 107BY-1 & 107B-2				

CONTRACT NO. 94827

SHEET NOTE
 THE CONTRACTOR SHALL INSTALL 18"Ø PIPE CULVERT RT STA. 1030+56.00 AND 1031+38.00 TO EXTEND DRAINS BEYOND EMBANKMENT LINE. THE CONTRACTOR SHALL MAINTAIN THE EXISTING STORM SEWER CROSSING AT STA. 1030+46 AND STA. 1031+37 UNTIL DRAINAGE IN STAGE II IS COMPLETE ENOUGH TO DRAIN THE NORTH SIDE OF IL ROUTE 32/33 TO THE WEST.



DATE	BY	DESCRIPTION

DATE	BY	DESCRIPTION

PROP. CURVE PROPS
 P.I. STA. = 1014+09.68
 $\Delta = 25^\circ 19' 45''$ (RT)
 D = 0° 30' 00"
 R = 11,456.75'
 T = 2,574.44'
 L = 5,064.76'
 E = 285.69'
 $e = 1.56\%$
 P.C. STA. = 988+35.24
 P.T. STA. = 1039+00.00
 SE ATTAINED STA. 985+70.00 TO STA. 989+00.00
 SE REMOVED STA. 1025+00.00 TO STA. 1026+75.00

EXIST. CURVE C-3
 P.I. STA. = 1034+75.4
 $\Delta = 44^\circ 02' 00''$
 D = 0° 30' 00"
 R = 11,459.2
 T = 4633.6
 L = 8806.7
 E = 901.4
 $e = 1.55\%$
 P.C. STA. = 988+41.2
 P.T. STA. = 1076+42.9

PIPE CULVERT, CLASS A, TYPE 1, 18"
 RT STA. 1030+56.00 18'
 RT STA. 1031+38.00 18'
 TOTAL 36'

TERMINAL MARKER - DIRECT APPLIED
 RT STA. 1021+17.90 1 EACH

BUILDING REMOVAL NO. 2
 RT STA. 1029+75.00 1 L SUM

FLARED END SECTION REMOVAL
 RT STA. 1030+56.00 1 EACH
 RT STA. 1031+38.00 1 EACH
 TOTAL 2 EACH

STEEL PLATE BEAM GUARDRAIL, TYPE A (SPECIAL)
 LT STA. 1021+80.40 - STA. 1022+00.40 31'

PAVED DITCH REMOVAL
 RT STA. 1021+00.00 - STA. 1021+44.49 45'
 LT STA. 1021+00.00 - STA. 1021+25.45 28'
 TOTAL 73'

GUTTER OUTLET REMOVAL
 LT STA. 1025+16.18 - STA. 1025+61.30 1 EACH
 RT STA. 1025+77.57 - STA. 1026+49.74 1 EACH
 TOTAL 2 EACH

CONCRETE GUTTER, TYPE A
 LT STA. 1025+55.00 - STA. 1032+00.00 645'
 RT STA. 1027+55.00 - STA. 1031+50.00 395'
 RT STA. 1031+75.00 - STA. 1032+00.00 25'
 TOTAL 1065'

CLASS SI CONCRETE (OUTLET)
 LT STA. 1025+50.00 4.0 CU YD
 RT STA. 1027+50.00 4.5 CU YD
 RT STA. 1031+75.00 5.5 CU YD
 TOTAL 14.0 CU YD

RETAINING WALL REMOVAL
 LT STA. 1025+69.00 - STA. 1030+24.00 1520 SQ FT
 RT STA. 1027+33.00 - STA. 1030+51.00 1062 SQ FT
 LT STA. 1030+50.00 - STA. 1031+31.00 271 SQ FT
 RT STA. 1030+64.00 - STA. 1031+32.00 227 SQ FT
 LT STA. 1031+43.00 - STA. 1032+00.00 190 SQ FT
 RT STA. 1031+55.00 - STA. 1032+00.00 150 SQ FT
 TOTAL 3420 SQ FT

PILLAR REMOVAL
 LT STA. 1023+59.76 1 EACH
 LT STA. 1023+85.31 1 EACH
 TOTAL 2 EACH

PIPE UNDERDRAINS FABRIC LINED TRENCH, 6"
 LT STA. 1021+00.00 - STA. 1032+00.00 1100'
 RT STA. 1021+00.00 - STA. 1032+00.00 1100'
 TOTAL 2200'

PIPE UNDERDRAINS 6" (SPECIAL)
 LT STA. 1023+00.00 17'
 LT STA. 1025+30.00 17'
 RT STA. 1025+50.00 17'
 RT STA. 1030+56.00 17'
 TOTAL 68'

PIPE UNDERDRAIN REMOVAL
 LT STA. 1021+00.00 - STA. 1023+50.00 250'
 RT STA. 1021+00.00 - STA. 1024+40.00 340'
 RT STA. 1025+22.00 - STA. 1032+00.00 678'
 TOTAL 1268'

CONCRETE HEADWALL FOR PIPE DRAINS
 LT STA. 1023+00.00 1 EACH
 LT STA. 1025+30.00 1 EACH
 RT STA. 1025+50.00 1 EACH
 RT STA. 1030+56.00 1 EACH
 TOTAL 4 EACH

REMOVING INLETS
 LT STA. 1030+35.79 2 EACH
 RT STA. 1030+55.79 1 EACH
 LT STA. 1031+36.56 2 EACH
 RT STA. 1031+37.75 1 EACH
 TOTAL 6 EACH

STORM SEWER TO BE FILLED
 LT STA. 1030+36.00 0.7 CU YDS
 LT & RT STA. 1030+36.00 - STA. 1030+56.00 2.5 CU YDS
 RT STA. 1030+56.00 2.6 CU YDS
 LT STA. 1031+37.00 0.6 CU YDS
 LT & RT STA. 1031+37.00 - STA. 1031+38.00 2.2 CU YDS
 RT STA. 1031+38.00 2.6 CU YDS
 TOTAL 11.2 CU YDS