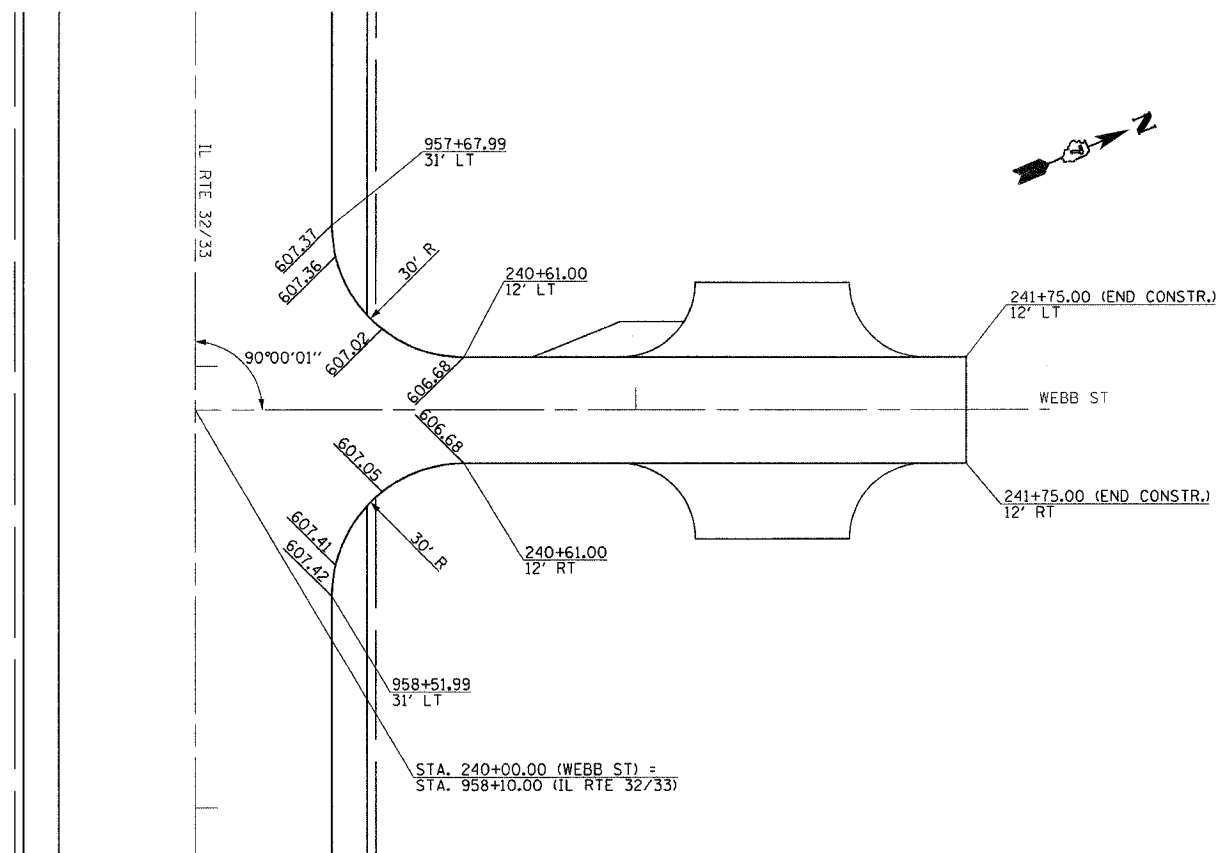
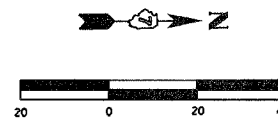
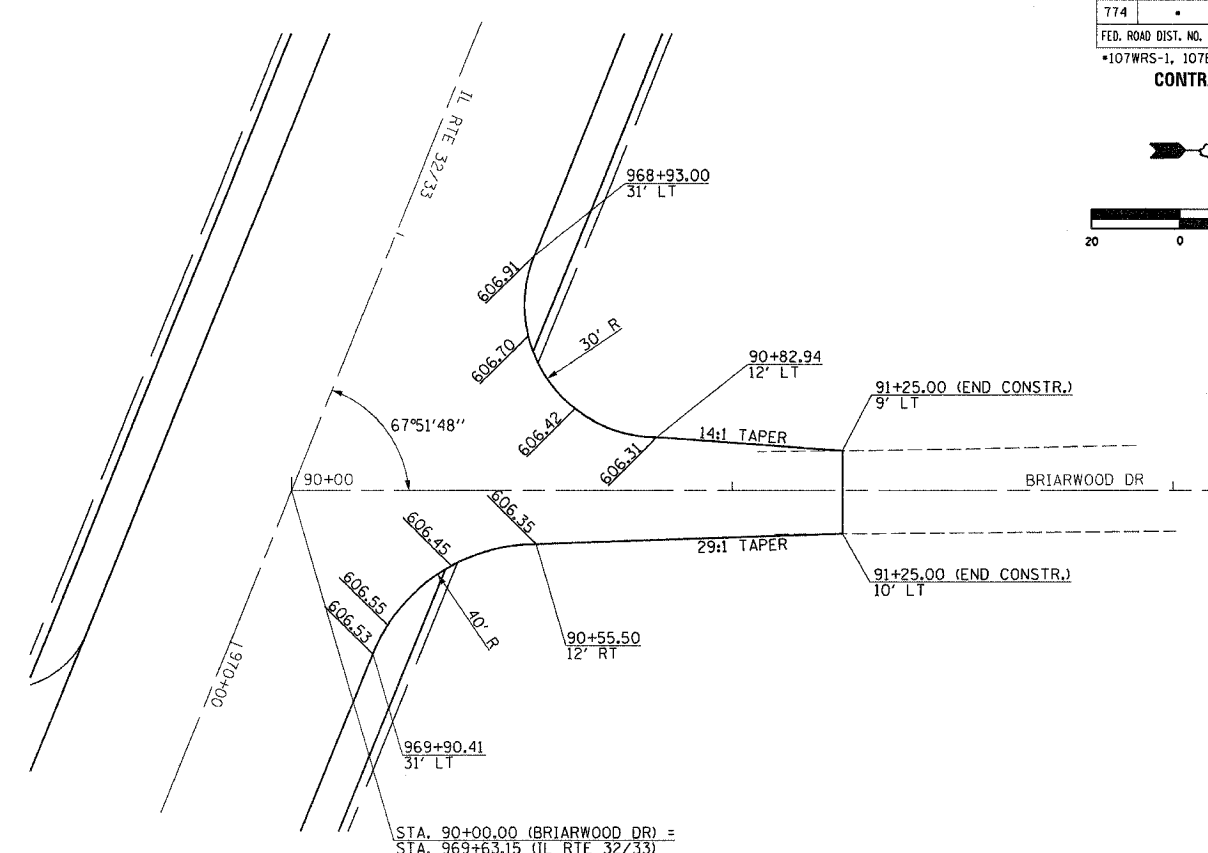


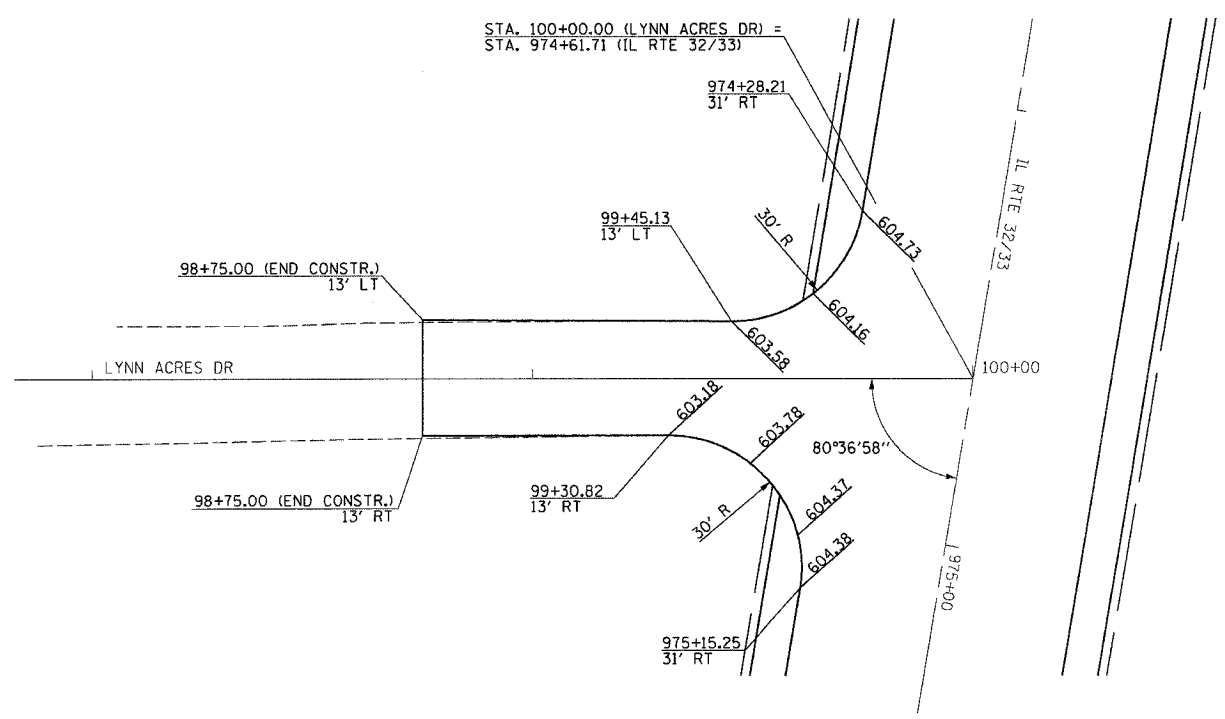
F.A.P. RTE.	SECTION	COUNTY	TOTAL SHEETS	SHEET NO.
774	.	EFFINGHAM	344	98
FED. ROAD DIST. NO. 7 ILLINOIS FED. AID PROJECT				
*107WRS-1, 107BY, 107BY-1 & 107B-2				
CONTRACT NO. 94827				



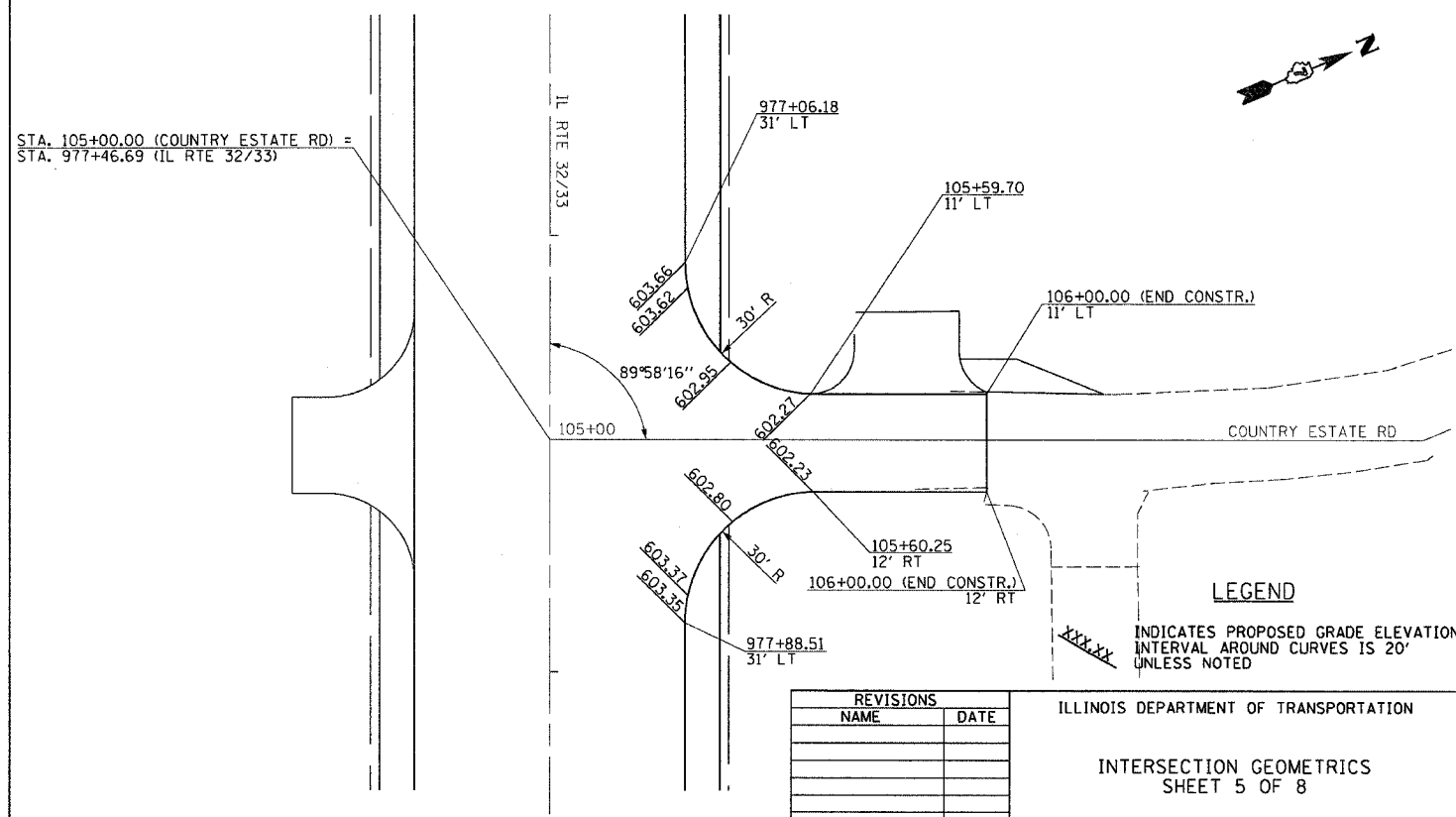
WEBB ST



BRIARWOOD DR



LYNN ACRES DR



COUNTRY ESTATE RD

LEGEND
 XXX,XX INDICATES PROPOSED GRADE ELEVATION INTERVAL AROUND CURVES IS 20' UNLESS NOTED

REVISIONS	
NAME	DATE

ILLINOIS DEPARTMENT OF TRANSPORTATION

INTERSECTION GEOMETRICS
SHEET 5 OF 8

DATE 8/02
 DRAWN BY MLO
 CHECKED BY SJK