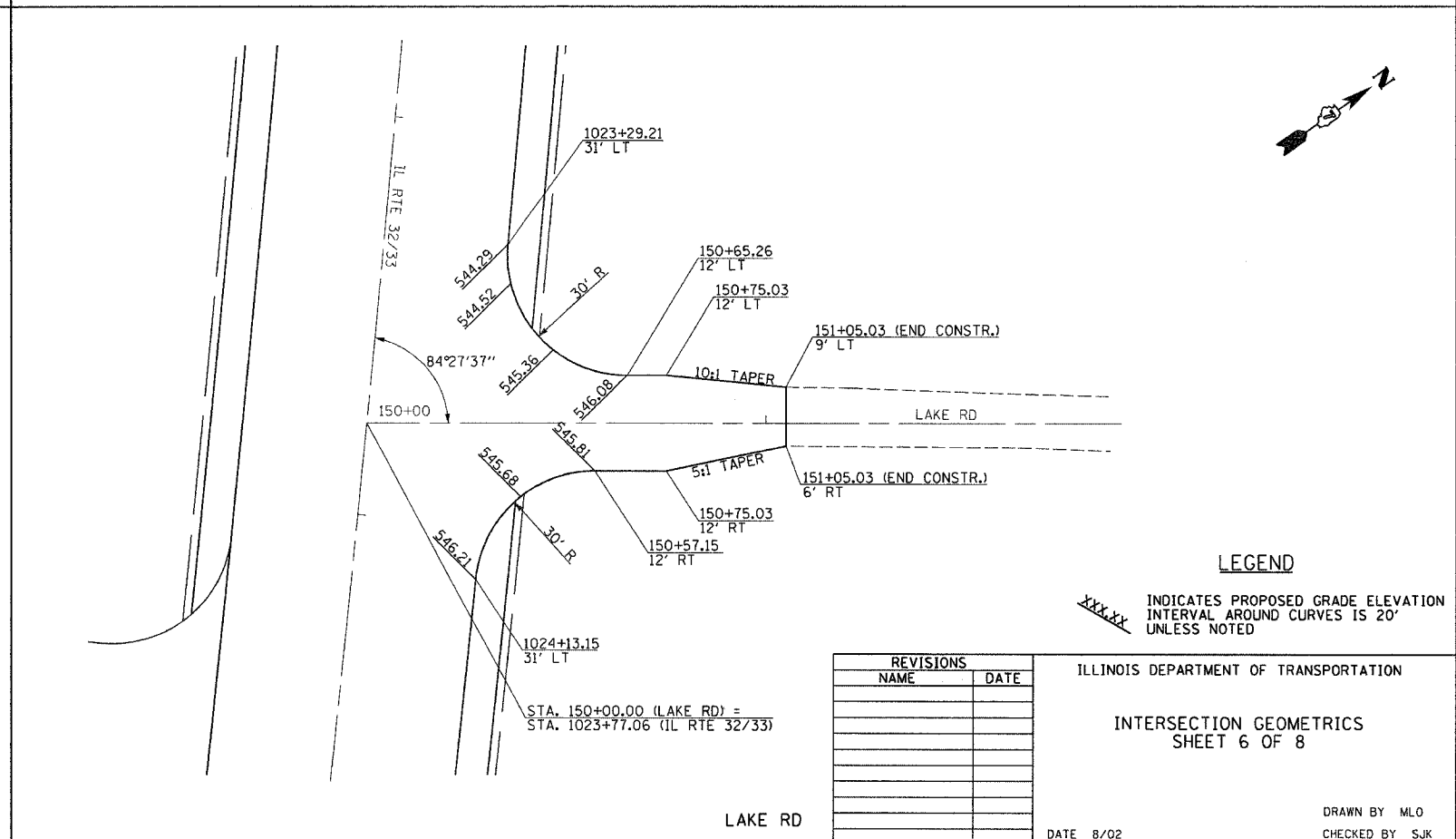
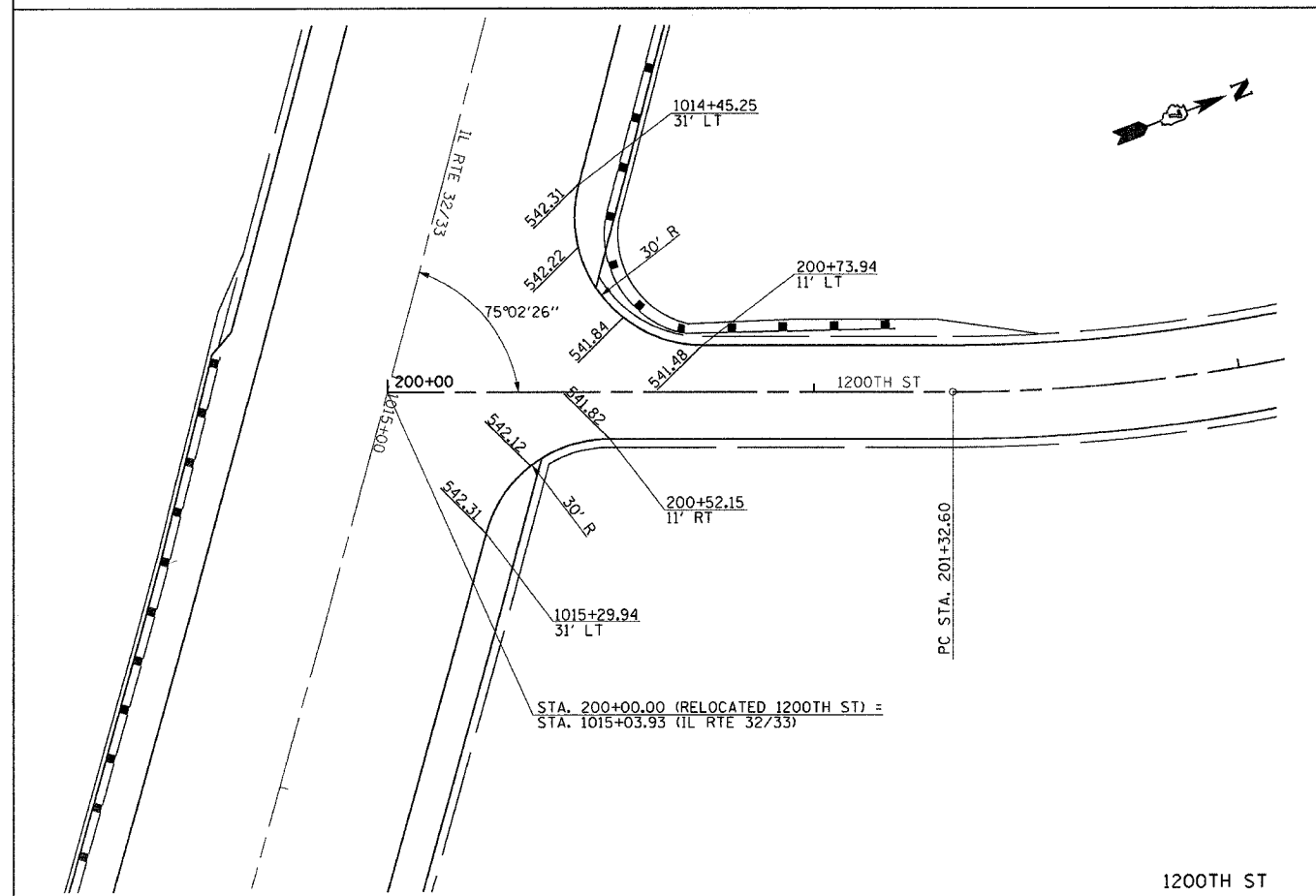
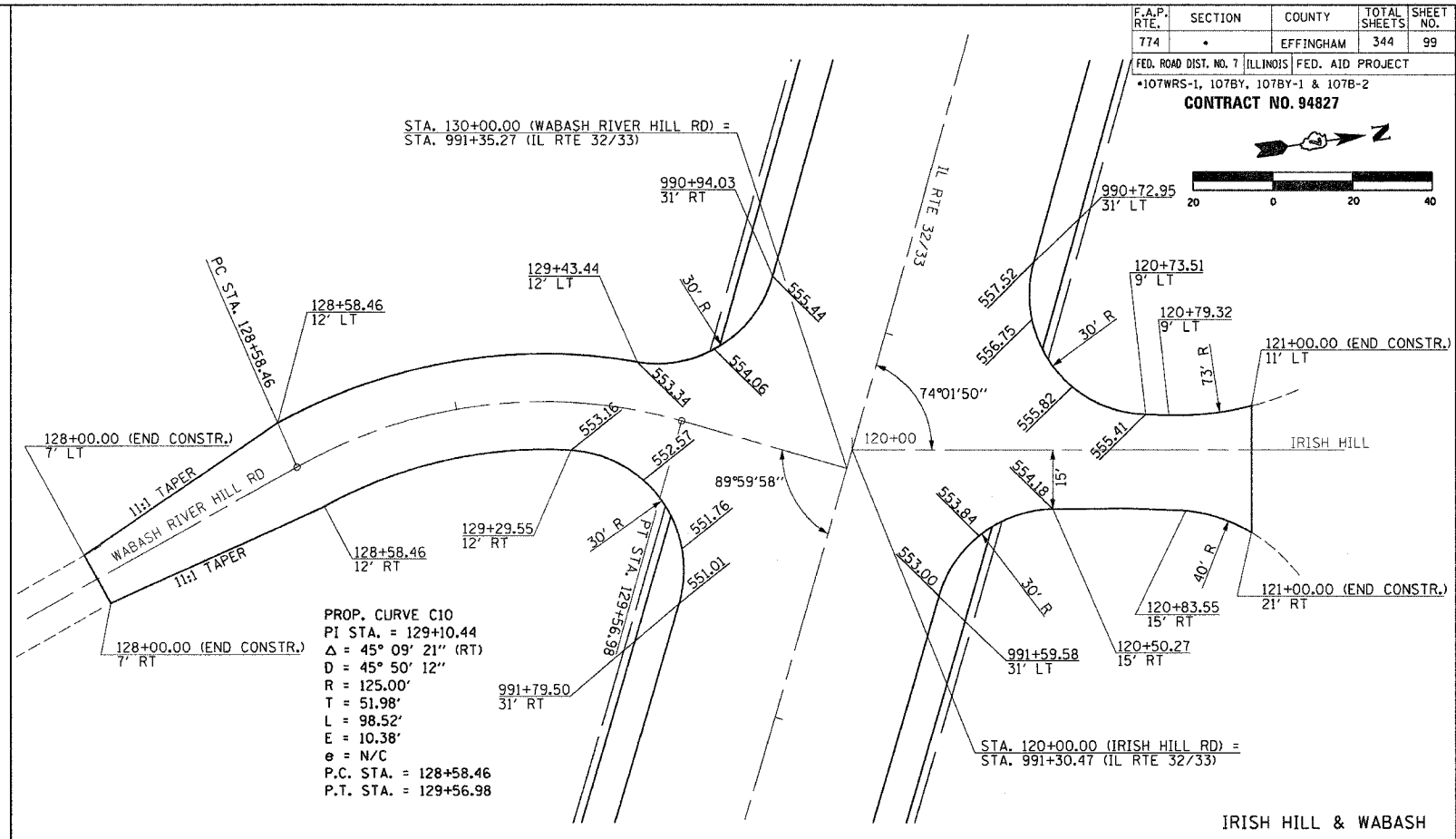
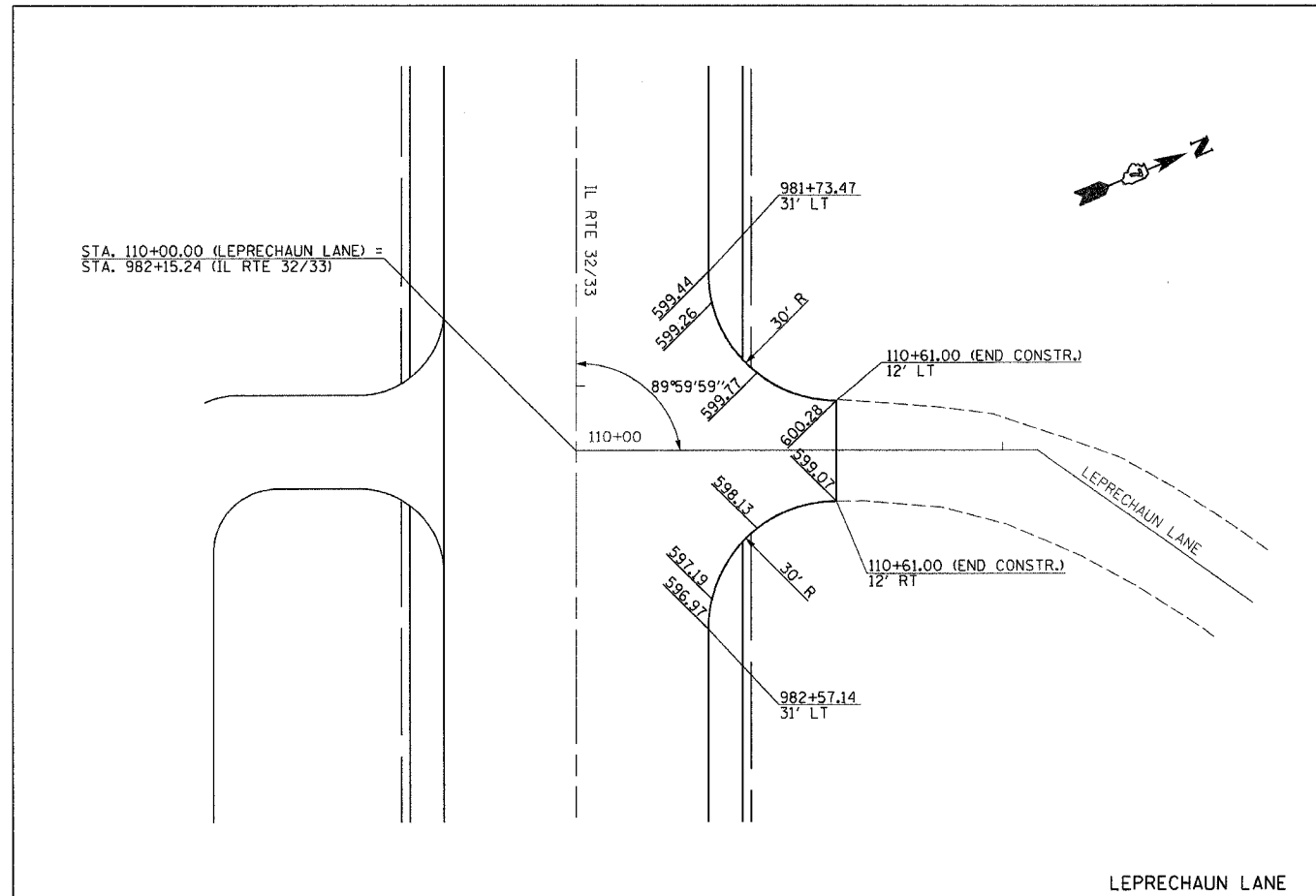
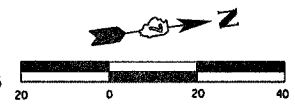


F.A.P. RTE.	SECTION	COUNTY	TOTAL SHEETS	SHEET NO.
774		EFFINGHAM	344	99

FED. ROAD DIST. NO. 7 (ILLINOIS) FED. AID PROJECT
 107WRS-1, 107BY, 107BY-1 & 107B-2
CONTRACT NO. 94827



LEGEND
 XXXXX INDICATES PROPOSED GRADE ELEVATION
 INTERVAL AROUND CURVES IS 20'
 UNLESS NOTED

REVISIONS	
NAME	DATE

ILLINOIS DEPARTMENT OF TRANSPORTATION
 INTERSECTION GEOMETRICS
 SHEET 6 OF 8

DATE 8/02

DRAWN BY MLO
 CHECKED BY SJK