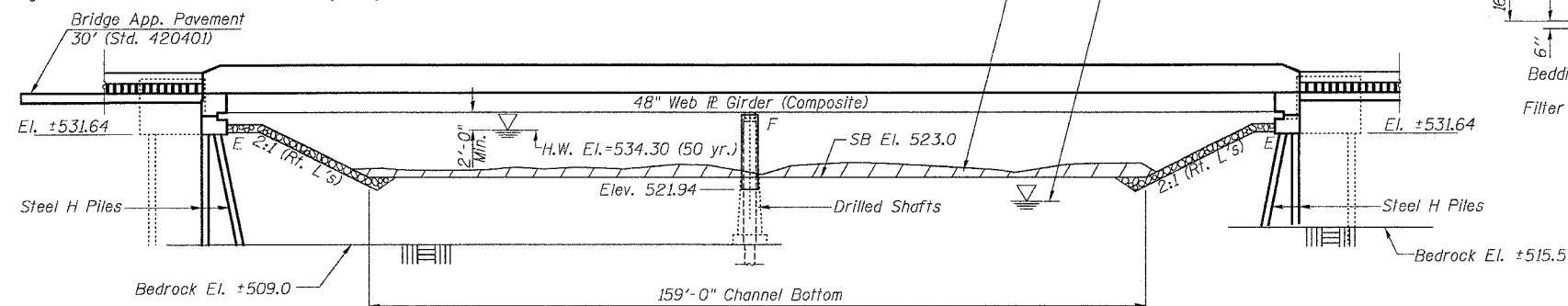
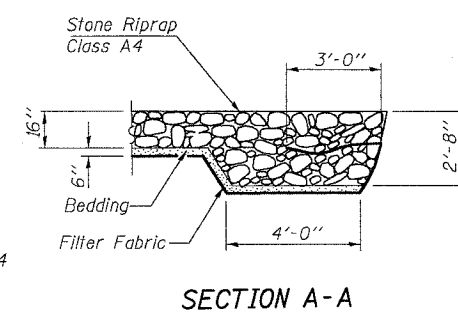


Bench Mark: Chiseled "□" above bridge name plate Elev. = 543.66

Existing Structure: SN 025-0077 built in 1971 as Ill Rte. 32/33 (FAP 774) Sec. 107(BR, BR-1)
The superstructure consists of RC deck 225'-8" long by 46'-0" wide out to out supported on a two span R girder.
Traffic shall be maintained during the rehabilitation of the structure by Staged Construction.



ELEVATION



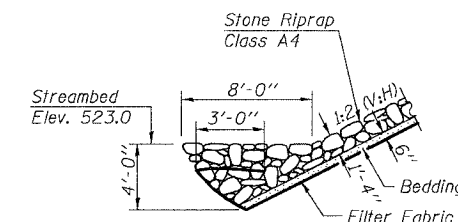
SECTION A-A

ROUTE NO.	SECTION	COUNTY	TOTAL SHEETS	SHEET NO.	SHEET NO. 1 26 SHEETS
F.A.P. RTE. 774	107BY-1	EFFINGHAM	344	267	
FED. ROAD DIST. NO. 7 ILLINOIS FED. AID PROJECT-					

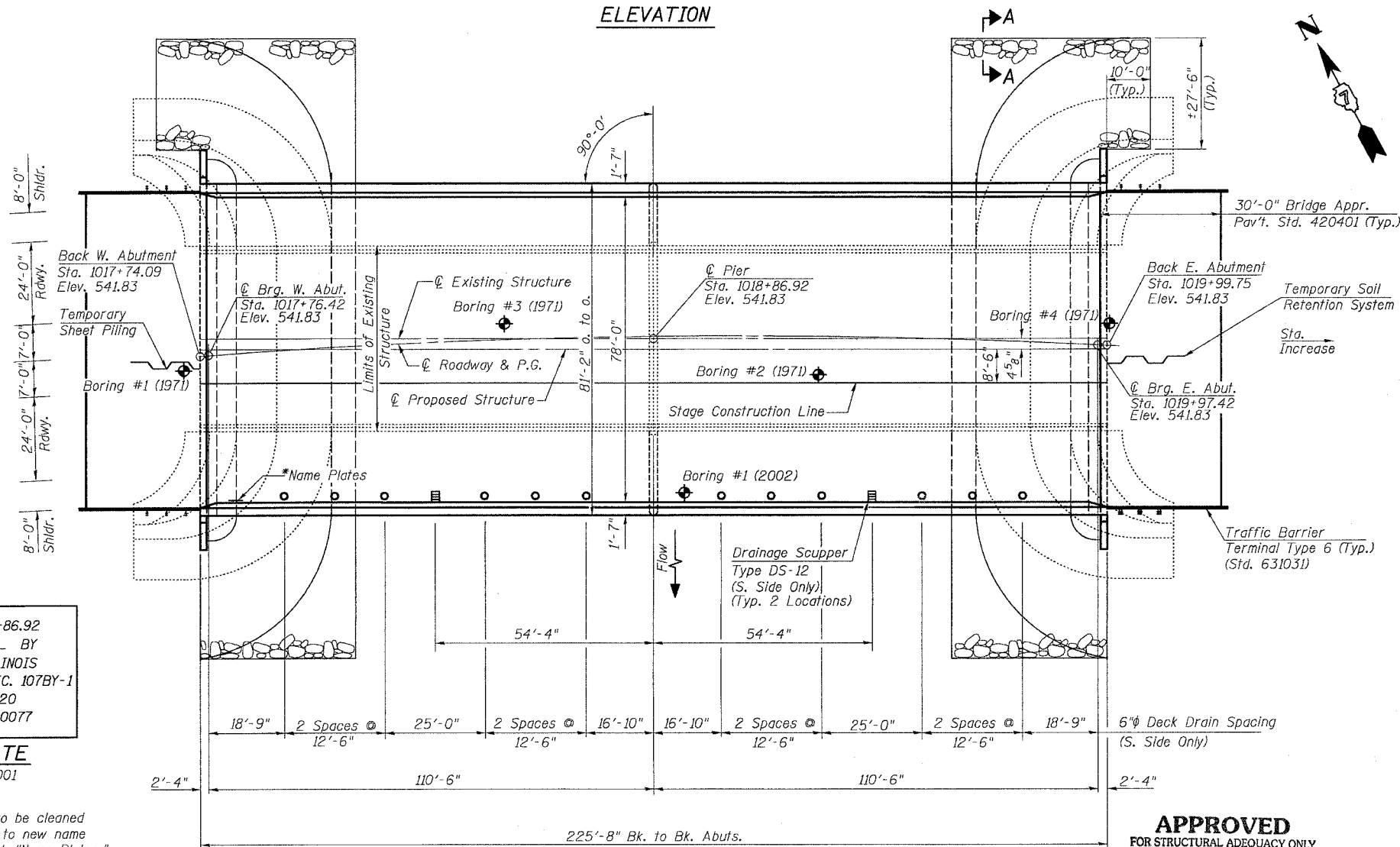
CONTRACT NO. 94827

Curve Data

P.I. = Sta. 1014+09.68
 $\Delta = 25^{\circ}19'45''$ (RT)
 $D = 0^{\circ}30'00''$
 $R = 11,456.75'$
 $L = 5,064.76'$
 $T = 2,574.44'$
 $E = 285.69'$
 $S.E. = 1.56\%$
P.C. = Sta. 988+35.24
P.T. = Sta. 1039+00.00
SE Attained Sta. 985+68.57 to Sta. 989+68.57
SE Removed Sta. 1037+66.67 to Sta. 1041+66.67



STONE RIPRAP ANCHOR DETAIL



PLAN

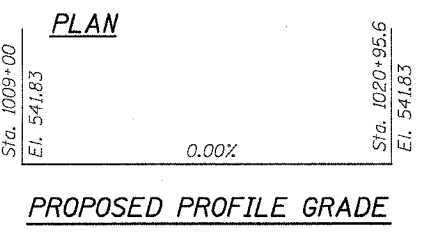
STATION 1018+86.92
REBUILT 20__ BY
STATE OF ILLINOIS
F.A.P. RTE. 774 SEC. 107BY-1
LOADING HS20
STR. NO. 025-0077

NAME PLATE
See Std. 515001

*Exist. name plate is to be cleaned and relocated adjacent to new name plate. Cost included with "Name Plates."

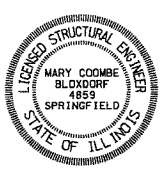
WATERWAY INFORMATION

Drainage Area=220 Sq. Miles		Low Grade Elev.=541.3 @ Sta. 1010+00		Max. Rec. H.W.E.=Unk.	
Flood	Freq. Yr.	Q _{total} C.F.S.	Q _{bridge} C.F.S.	Opening Sq. Ft.	Nat. H.W.E.
Design	50	19,000	7728	1559	534.3
Base	100	21,700	9010	1724	535.0
Max. Calc.	500	28,000	11829	2087	536.7
				1997	537.3

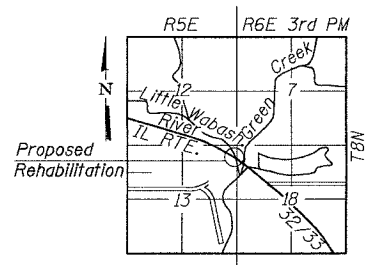


PROPOSED PROFILE GRADE

APPROVED
FOR STRUCTURAL ADEQUACY ONLY



Illinois Structural No. 4859
Expires 11-30-2004
Date: 12/23/03



LOCATION SKETCH

LOADING HS20-44

Allow 50#/sq. ft. for future wearing surface.

DESIGN SPECIFICATIONS

AASHTO 1996 and Interims 1997 Thru 2002 and 1995 Seismic Retrofitting Manual for Highway Bridges FHWA-RD-94-052.

DESIGN STRESSES

NEW CONSTRUCTION	EXISTING CONSTRUCTION
$f'_c = 3,500$ psi	$f_y = 36,000$ psi St. Steel
$f_y = 60,000$ psi (reinf.)	
$f_y = 36,000$ psi (M270 Grade 36)	

SEISMIC DATA

Seismic Performance Category (SPC) = A
Bedrock Acceleration Coefficient (A) = 0.07g
Site Coefficient (S) = 1.0

SHEET TITLE GENERAL PLAN AND ELEVATION	
PROJECT IL RTE. 32/33 OVER LITTLE WABASH RIVER OVERFLOW F.A.P. RTE. 774 SECTION 107BY-1 EFFINGHAM COUNTY STATION 1018+86.92 STRUCTURE NO. 025-0077	PROJECT NO. 02017 SCALE DATE DRAWN BY TFG CHECKED BY KPS/CME/MCB DRAWING NO.
COOMBE-BLOXDORF P.C. Engineers / Land Surveyors Springfield, Illinois Design Firm License No. 184-002703	
	1 OF 26 SHTS