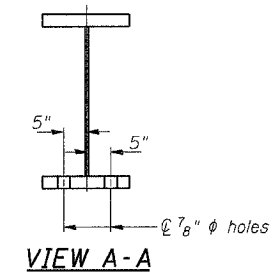
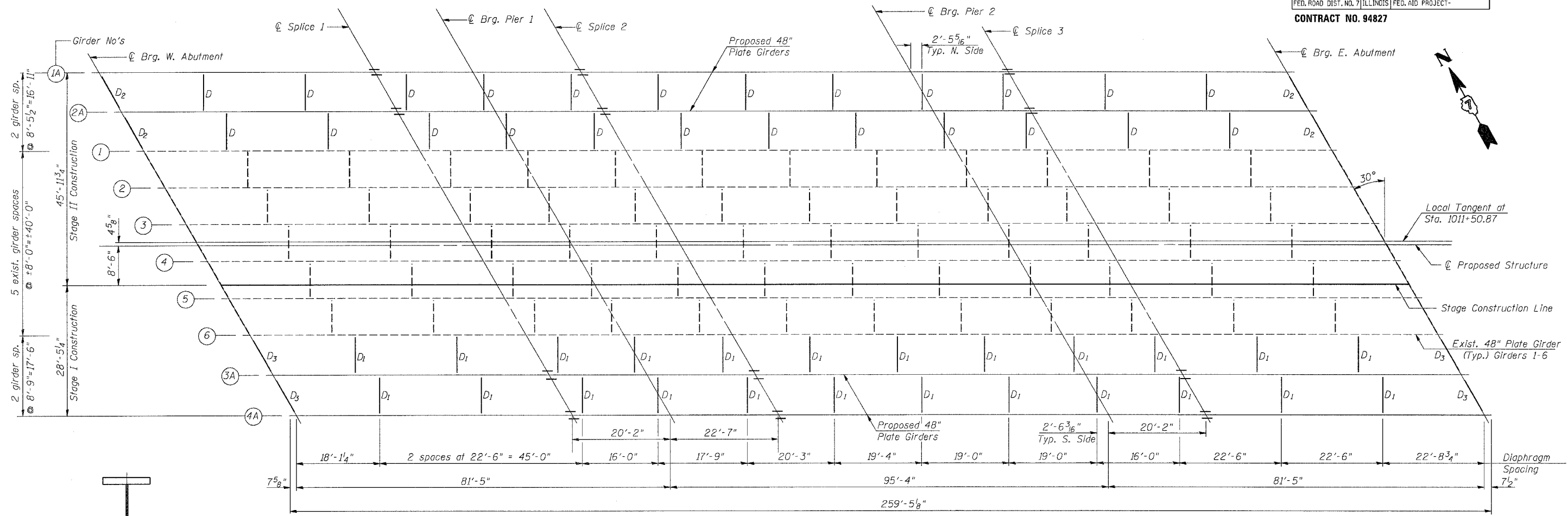


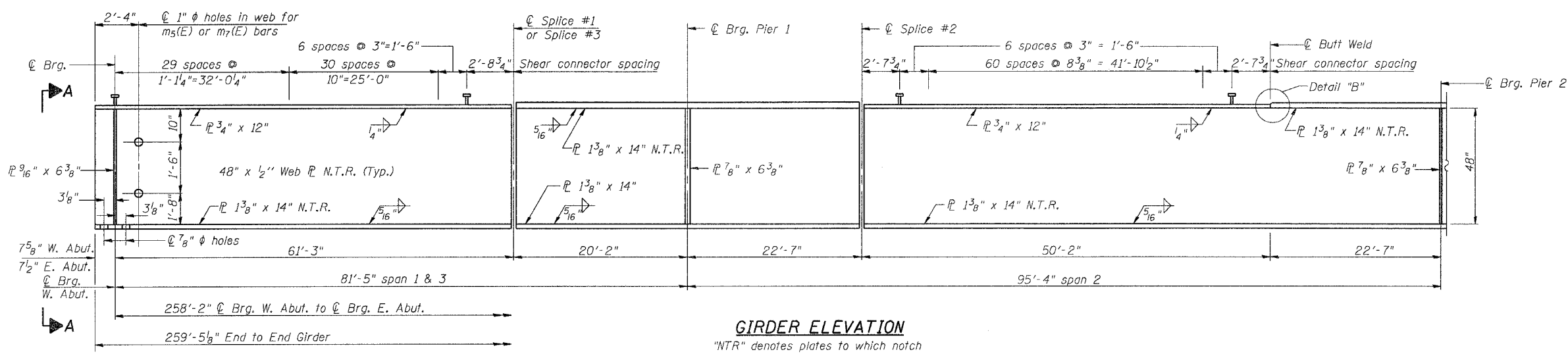
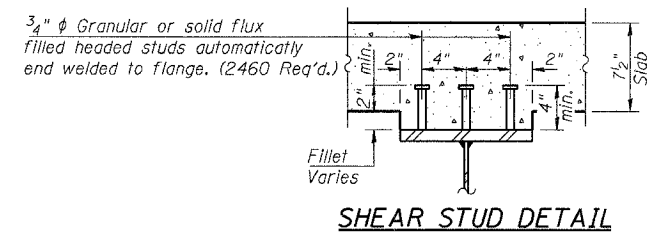
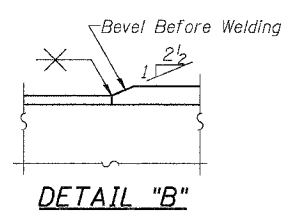
ROUTE NO.	SECTION	COUNTY	TOTAL SHEETS	SHEET NO.	SHEET NO. 12 29 SHEETS
F.A.P. RTE.	107BY	EFFINGHAM	344	304	
FED. ROAD DIST. NO. 7 ILLINOIS FED. AID PROJECT-					

CONTRACT NO. 94827



FRAMING PLAN

The existing steel diaphragms at the abutments shall be cleaned and left in place.
Cost of cleaning is included with Concrete Superstructure.



GIRDER ELEVATION

"NTR" denotes plates to which notch toughness requirements are applicable.

STRUCTURAL STEEL		
PROJECT	SCALE	PROJECT NO.
IL RTE. 32/33 OVER LITTLE WABASH RIVER	AS SHOWN	02017
F.A.P. RTE. 774 SECTION 107BY	DATE	
EFFINGHAM COUNTY	DRAWN BY	TFG
STATION 1011+50.17	CHECKED BY	GJB/MCB
STRUCTURE NO. 025-0078	DRAWING NO.	
COOMBE-BLOXDORF P.C.		12
Engineers / Land Surveyors Springfield, Illinois		OF 29 SHTS
Design Firm License No. 184-002703		

structural-steel