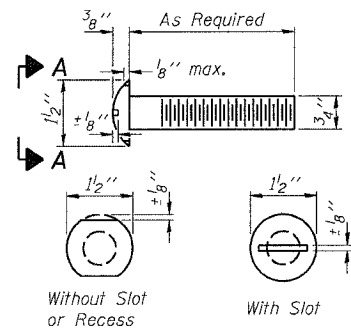


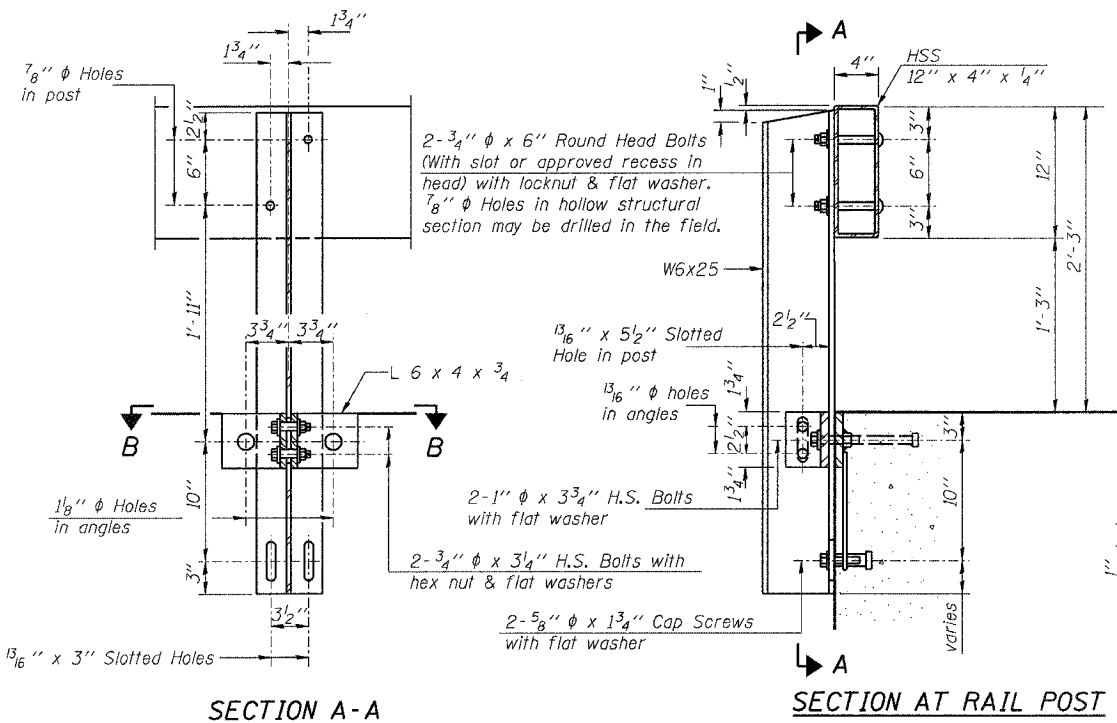
STATE OF ILLINOIS
DEPARTMENT OF TRANSPORTATION

ROUTE NO.	SECTION	COUNTY	DATE	SHEET	SHEET NO.
FAP 774	107B-2	EFFINGHAM	344	328	8 SHEETS
FED. ROAD DIST. NO. 7	ILLINOIS	FED. AID PROJECT-			

CONTRACT NO. 94827

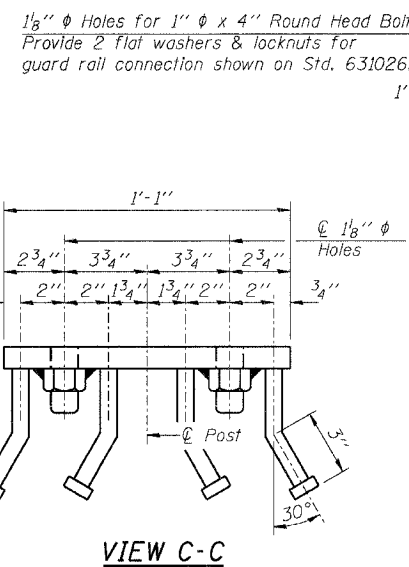


VIEW A-A
ROUND HEAD BOLT

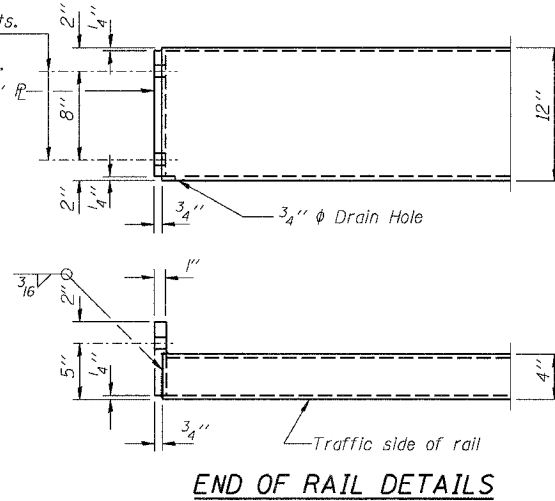


SECTION A-A

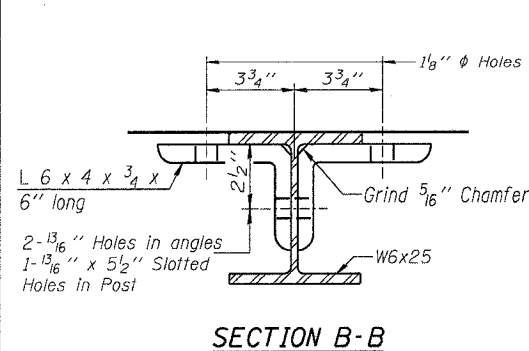
SECTION AT RAIL POST



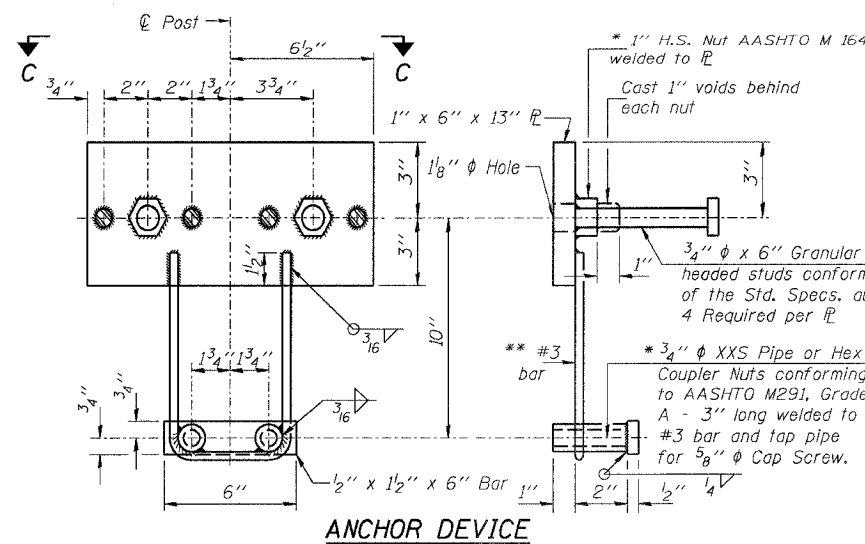
VIEW C-C



END OF RAIL DETAILS

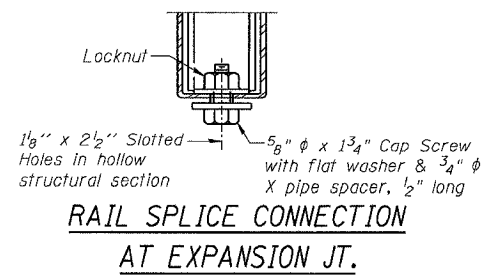


SECTION B-B

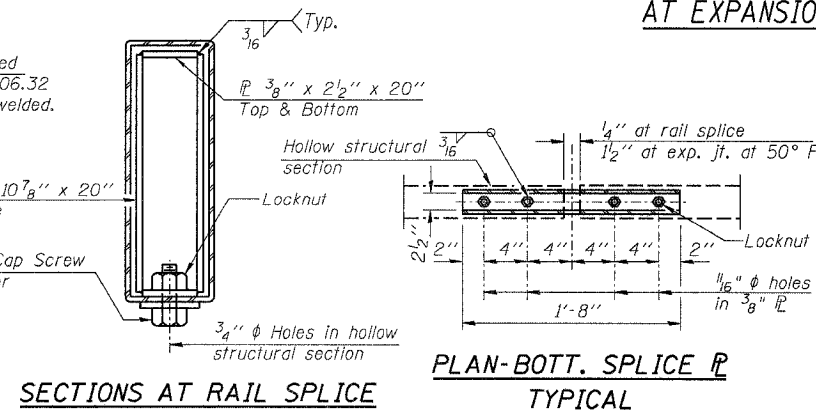


ANCHOR DEVICE

Whenever the lower insert assemblies interfere with strand locations, the #3 bars shall be cut and adjusted in order to allow raising or lowering of the lower inserts. Maximum adjustment not to exceed 1/2 inch.



RAIL SPLICE CONNECTION
AT EXPANSION JT.



SECTIONS AT RAIL SPLICE

PLAN-BOTT. SPLICE TYPICAL

BILL OF MATERIAL

Item	Unit	Quantity
Steel Railing Type S-1	Foot	222

TYPE S-1 STEEL RAILING
1200th STREET OVER GREEN CREEK
FAP RTE. 774, SECTION 107B-2
EFFINGHAM COUNTY
STATION 204+33.91
S.N. 025-3309

DESIGNED	TMM
CHECKED	KCM
DRAWN	CAR
CHECKED	TMM

R-23A 10-31-02 (10'-9" Maximum Post Spacing)