

# T 8 N-R 5 E 3rd P.M. SUMMIT TWP

F.A.P. RTE.	SECTION	COUNTY	TOTAL SHEETS	SHEET NO.
774		EFFINGHAM	344	338

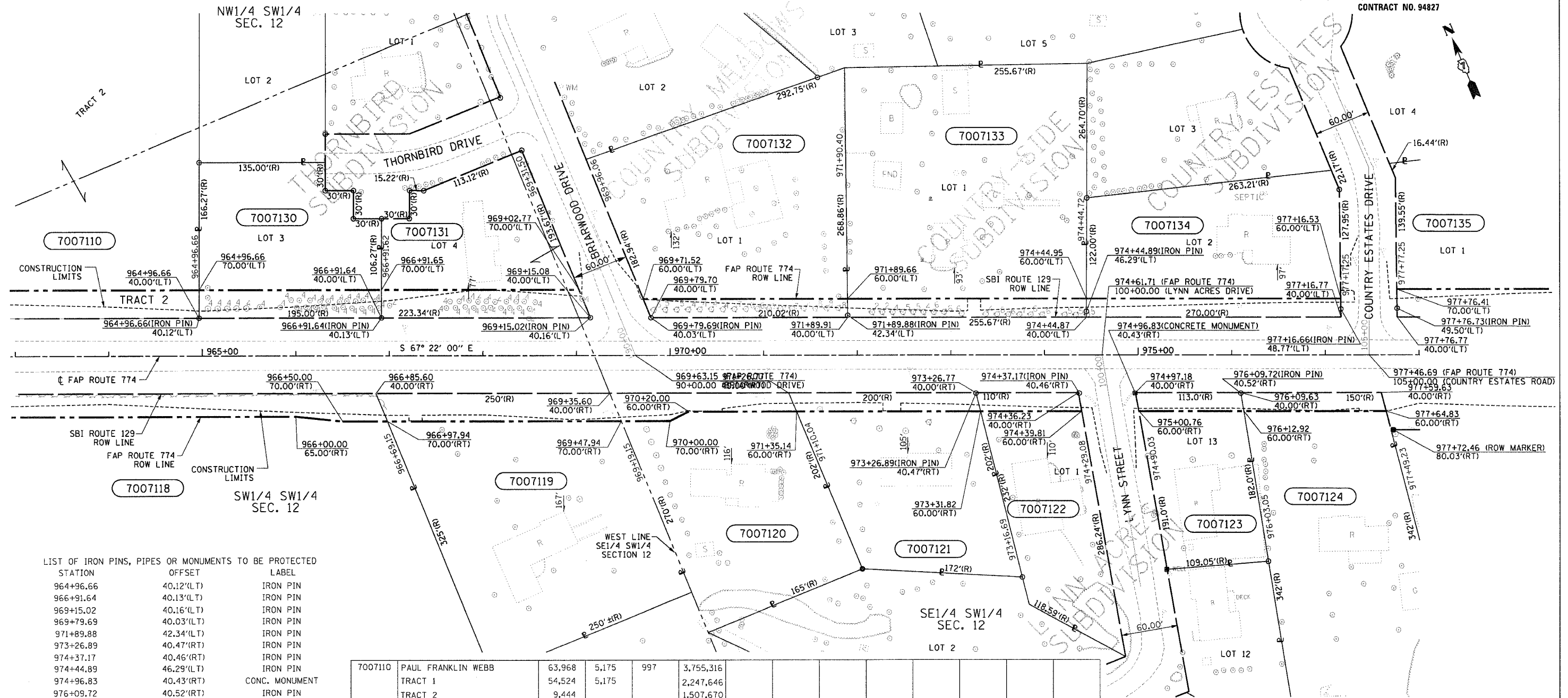
FED. ROAD DIST. NO. 7 ILLINOIS FED. AID PROJECT  
 \* 107WRS-1, 107BY, 107BY-1, 107B-2

SHEET NO. 9  
 15 SHEETS

CONTRACT NO. 94827

10/7/02  
 \0349903\ROW\ROWPLANS-8.DGN

1 2 3 4 5 6 7 8 9  
 10 11 12 13 14 15 16 17 18  
 19 20 21 22 23 24 25 26 27  
 28 29 30 31 32 33 34 35 36  
 37 38 39 40 41 42 43 44 45  
 46 47 48 49 50 51 52 53 54  
 55 56 57 58 59 60 61 62 63



LIST OF IRON PINS, PIPES OR MONUMENTS TO BE PROTECTED

STATION	OFFSET	LABEL
964+96.66	40.12'(LT)	IRON PIN
966+91.64	40.13'(LT)	IRON PIN
969+15.02	40.16'(LT)	IRON PIN
969+79.69	40.03'(LT)	IRON PIN
971+89.88	42.34'(LT)	IRON PIN
973+26.89	40.47'(RT)	IRON PIN
974+37.17	40.46'(RT)	IRON PIN
974+44.89	46.29'(LT)	IRON PIN
974+96.83	40.43'(RT)	CONC. MONUMENT
976+09.72	40.52'(RT)	IRON PIN
977+16.66	48.77'(LT)	IRON PIN
977+76.73	49.50'(LT)	IRON PIN

**UTILITIES:**

TELEPHONE- ILLINOIS CONSOLIDATED TELEPHONE COMPANY  
 VERIZON NORTH INC.

GAS- AMEREN CIPS

ELECTRICITY- NORRIS ELECTRIC COOPERATIVE  
 AMEREN CIPS

WATER- E J WATER CORPORATION  
 LAKE SARA AREA WATER COOPERATIVE, INC.  
 CITY OF EFFINGHAM

SEWER- CITY OF EFFINGHAM

T.V. CABLE- AT & T MEDIA SERVICE

PARCEL	OWNER	ADD AREA	EXIST. AREA TAKEN	EASEMENT	REM. AREA	INST	MICRO FILM NO RECORDED	DATE	BOOK	PAGE	AREA EXCESS	SOLD
7007110	PAUL FRANKLIN WEBB	63,968	5,175	997	3,755,316							
	TRACT 1	54,524	5,175		2,247,646							
	TRACT 2	9,444			1,507,670							
7007118	PAUL WEBB ET AL	20,879			1,340,626							
7007119	ELWOOD WEBB	7,500			56,655							
7007120	THOMAS L. CLOUGH	4,466			38,090							
7007121	LEROY ZIEGLER AS TRUSTEE OF THE LEROY ZIEGLER TRUST	3,967			31,415							
7007122	CARL J. SIEPKER	2,175			23,276							
7007123	JOHN D. STORM	2,246			18,221							
7007124	DAVID LEE HEUERMAN	3,019			52,451							
7007130	RODNEY L. LOVELLETTE	5,850			23,885							
7007131	BILLIE GENE DOWLING	6,518			21,844							
7007132	WILMER L. WOELFER	4,284			50,466							
7007133	JERRY R. JANSEN	5,102			63,985							
7007134	ORVILLE E. LAUE	5,435			33,174							
7007135	FREDERICK C. SCHAEFER	8,473			34,896							

CONTRACT NO. 94827  
 FIELD BOOK NO 449, 450, 451, 452 & 452B  
 (R) RECORDED DISTANCE

○ - IRON PIPE  
 ⊙ - IRON PIN  
 ■ - ROW MARKER  
 ■ - CONCRETE MONUMENT

NOTE: ALL AREAS ARE IN SQUARE FEET UNLESS OTHERWISE NOTED.

NOTE: BEARINGS ARE REFERENCED TO THE ILLINOIS STATE PLANE COORDINATE SYSTEM EAST ZONE DATUM OF 1983

**RIGHT OF WAY PLANS**  
**FAP ROUTE 774**

PROJECT SECTION 107WRS-1  
 107BY, 107BY-1  
 107B-2

STATION 963+00.00 TO  
 STATION 978+00.00

COUNTY EFFINGHAM

SCALE 1"=50' SHEET 9 OF 15

JOB NO. R-97-007-00

BLANK, WESSELINK, COOK & ASSOCIATES

ENGINEERS - CONSULTANTS DECATUR, ILLINOIS

F.A.P. 774 (IL RTE 32/33) SEC 107WRS-1, 107BY, 107BY-1 & 107B-2

EFFINGHAM COUNTY

E:\0349903\ROW\ROWPLANS-8.DGN 10/24/04 04:36:11 PM