

Elench Mark: #650, Chiseled square on NE abutment corner, S.N. 100-0048, Elevation 477.12

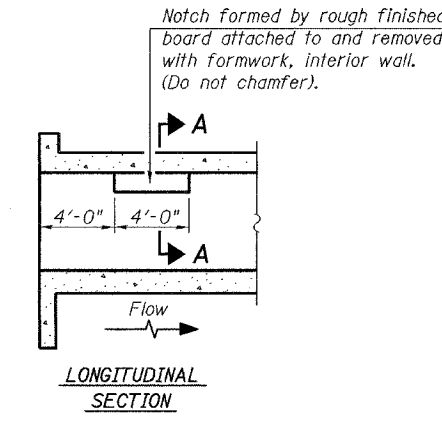
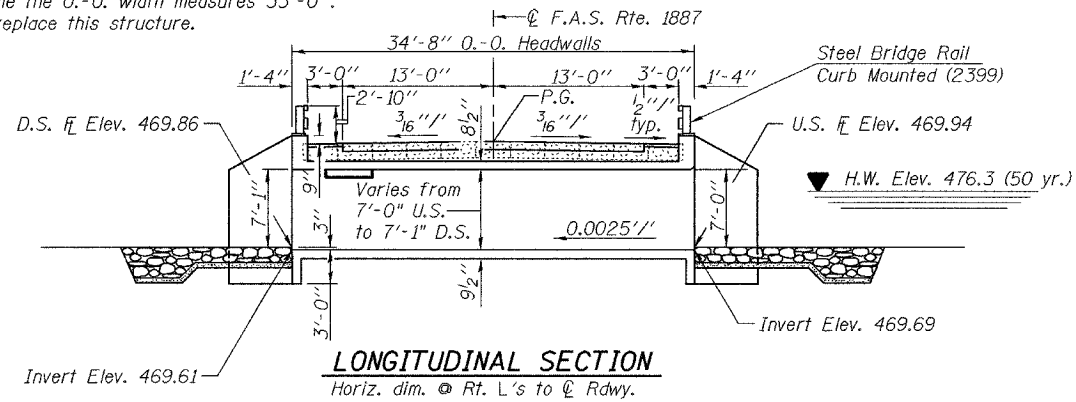
Existing Structure: S.N. 100-0048 built in 1921 as Route 13, Section 6B at Sta. 262+90.
 In 1970 the superstructure was replaced with single span PPC deck beams as S.B.I. Rte. 13, Section 6B-DR at Sta. 262+90.
 The substructure consists of closed abutments on spread footings. The Bk. to Bk. dimension measures 26'-0" while the O.-O. width measures 33'-0".
 Road closure shall be used to replace this structure.

No salvage

STATE OF ILLINOIS
 DEPARTMENT OF TRANSPORTATION

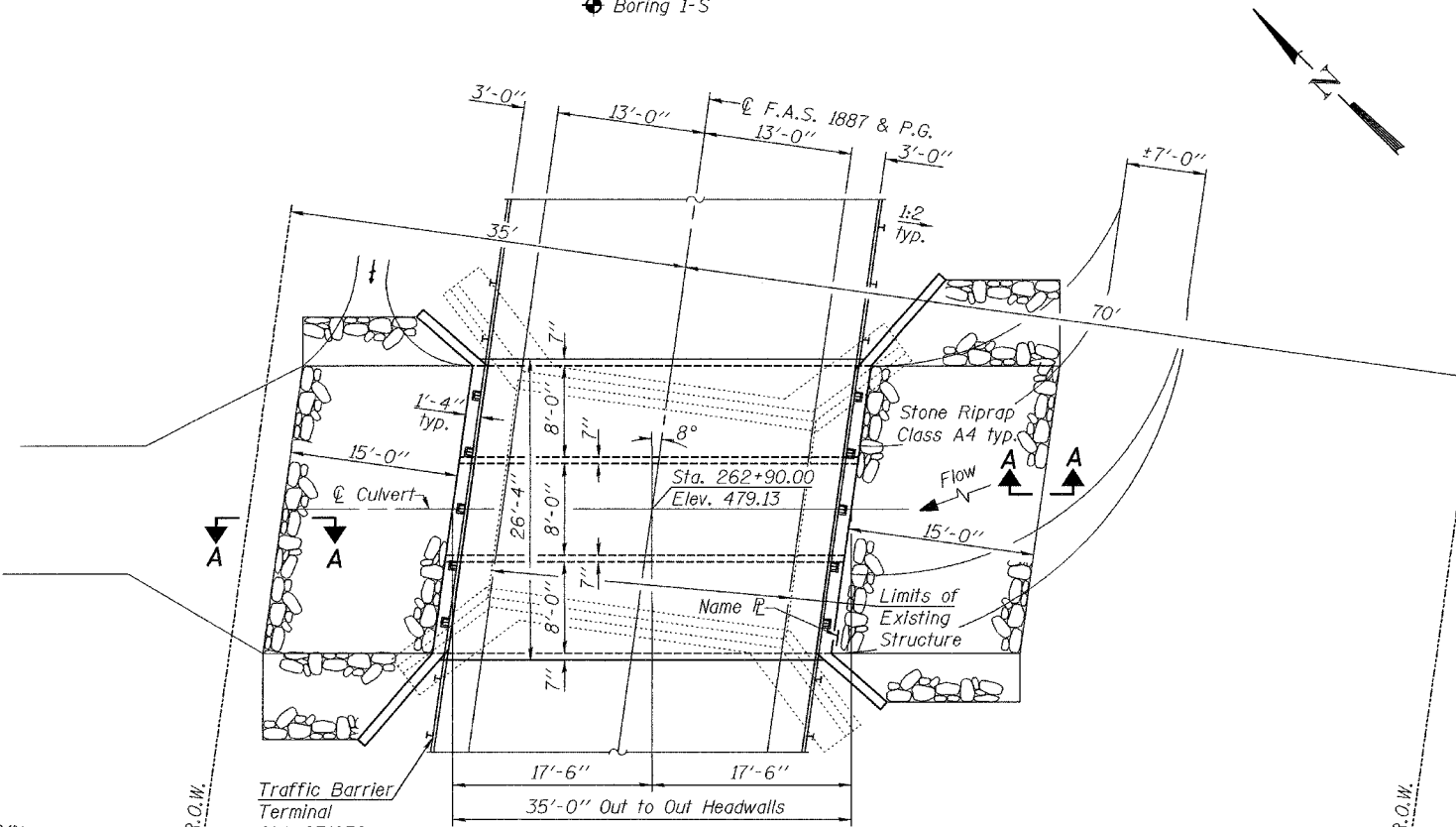
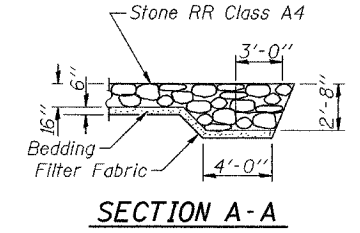
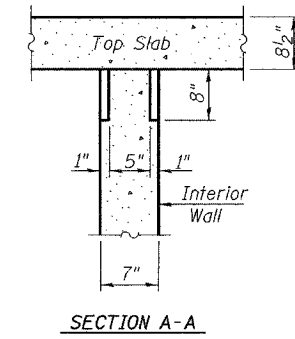
ROUTE NO.	SECTION	COUNTY	SHEET	SHEET NO. 1
F.A.S. 1887	6B-1	Williamson	27	23
FED. ROAD DIST. NO. 7	ILLINOIS	FED. AID PROJECT-		

Contract No. 98655



GENERAL NOTES

Reinforcement bars shall conform to the requirements of AASHTO M 31 or M 322 Grade 60.
 Layout of slope protection system may be varied in the field to suit ground conditions as directed by the Engineer.
 All Construction joints shall be bonded.
 Excavation behind existing abutment walls shall be done before removing the existing superstructure.
 At least 7'-8" of the barrel shall be poured monolithically with the wing walls. Precast alternate is not allowed.

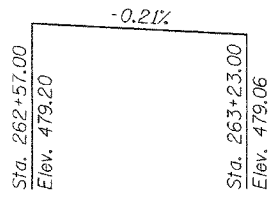


**PHOEBE NESTING
 SITE DETAILS**
 (Downstream End Only)

STATION 262+90.00
 BUILT 200 BY
 STATE OF ILLINOIS
 F.A.S. RT. 1887 SECTION 6B-1
 LOADING HS20
 STR. NO. 100-2021
NAME PLATE
 See Std. 515001

TOTAL BILL OF MATERIAL

ITEM	UNIT	TOTAL
Removal of Existing Structures	Each	1
Reinforcement Bars, Epoxy Coated	Pound	17,220
Name Plates	Each	1
Concrete Box Culverts	Cu. Yd.	117.2
Steel Bridge Rail	Foot	53
Stone Riprap, Class A4	Sq. Yd.	132.8
Filter Fabric for use with Riprap	Sq. Yd.	132.8

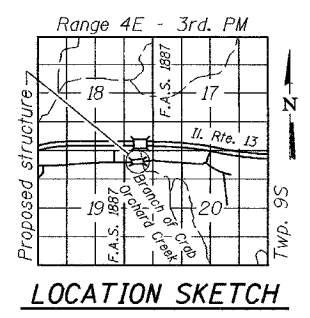


WATERWAY INFORMATION

Exist. Low Grade Elev. 478.70 @ Sta. 272+00
 Drainage Area = 100 mi² Prop. Low Grade Elev. 478.70 @ Sta. 272+00

Flood	Freq. Yr.	Q C.F.S.	Opening Sq. Ft.		Nat. Head - Ft.		Headwater El.		
			Exist.	Prop.	H.W.E. Exist.	Prop.	Exist.	Prop.	
10	480	135.3	138.0	475.7	1.4	0.2	477.1	475.9	
Design	50	730	149.7	152.4	476.3	2.4	0.7	478.7	477.0
Base	100	830	152.1	154.8	476.4	2.8	0.8	479.2	477.2
Max. Calc.	500	1080	164.1	166.8	476.9	3.3	1.3	480.2	478.2

LOADING HS20-44
 Allow 50#/sq. ft. for future wearing surface.
DESIGN SPECIFICATIONS
 2002 AASHTO
DESIGN STRESSES
FIELD UNITS
 f_c = 3,500 psi
 f_y = 60,000 psi (reinforcement)



GENERAL PLAN
 OLD IL. ROUTE 13 OVER
 BRANCH OF CRAB ORCHARD CREEK
 F.A.S. ROUTE 1887 - SECTION 6B-1
 WILLIAMSON COUNTY
 STATION 262+90.00
 STRUCTURE NO. 100-2021

DESIGNED *R. Sommer*
 CHECKED *R. Sommer*
 DRAWN *R. Sommer*
 CHECKED *PEC/GRA*

EXAMINED *Thomas J. De...*
 PASSED *Ralph E. Anderson*
 November 29 2004
 ENGINEER OF BRIDGE DESIGN
 ENGINEER OF BRIDGES AND STRUCTURES



Expires 11-30-2004