

F.A.P. RTE.	SECTION	COUNTY	TOTAL SHEETS	SHEET NO.
339	116-Y-2-BR-1	COOK	74	1

ILLINOIS CONTRACT NO. 60J00
* 74 + 2 = 76

D-91-136-10



LOCATION OF SECTION INDICATED THUS: - [black rectangle] -

STATE OF ILLINOIS
DEPARTMENT OF TRANSPORTATION
DIVISION OF HIGHWAYS

**PROPOSED
HIGHWAY PLANS**

**FAP 339 / ILLINOIS ROUTE 62 (ALGONQUIN RD.)
SECTION 116-Y-2-BR-1
OVER SALT CREEK (0.7 MI. E. OF IL 53)
BRIDGE SUPERSTRUCTURE REPLACEMENT & ROADWAY IMPROVEMENT
PROJECT NUMBER: ACBRF-0339(027)
COOK COUNTY
C-91-136-10**

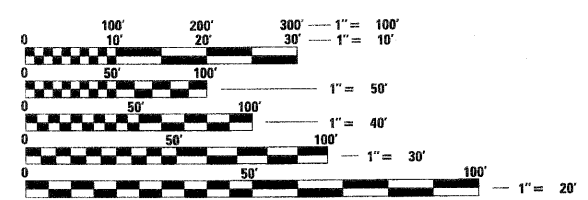
FOR INDEX OF SHEETS, SEE SHEET NO. 2

DESIGN DESIGNATION

COLLECTOR (URBAN)
ADT 37,400 (2007)
SPEED LIMIT 35 MPH

IMPROVEMENT LOCATED IN
THE CITY OF ROLLING MEADOWS

IMPROVEMENT LOCATION
ILLINOIS ROUTE 62
(ALGONQUIN ROAD)
OVER SALT CREEK
STRUCTURE NO: 016-0581
BEGIN PROJECT: STA. 95 + 01.21
END PROJECT: STA. 102 + 72.44



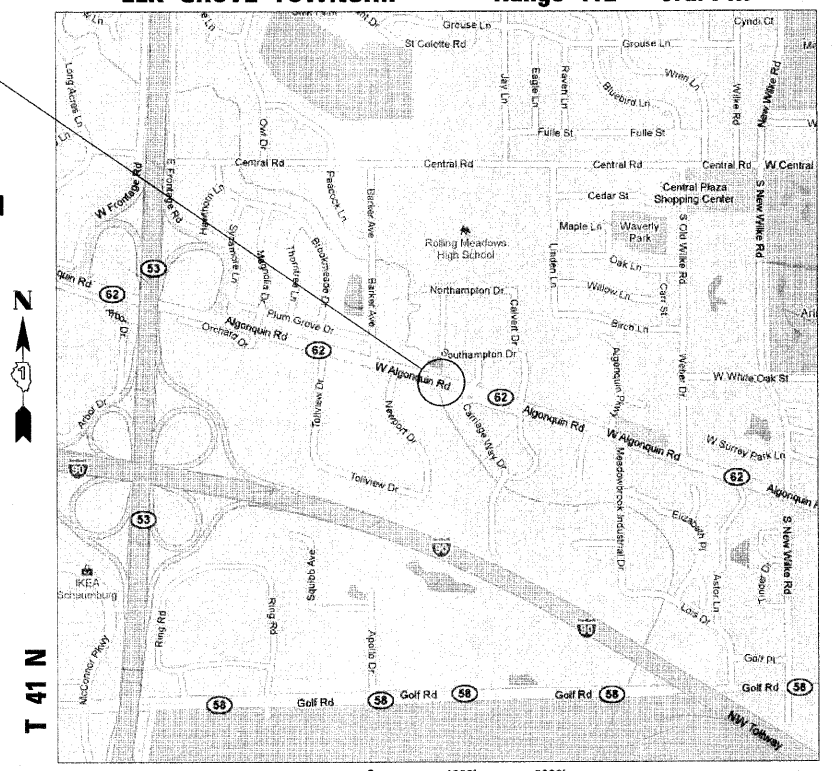
FULL SIZE PLANS HAVE BEEN PREPARED USING STANDARD ENGINEERING SCALES. REDUCED SIZED PLANS WILL NOT CONFORM TO STANDARD SCALES. IN MAKING MEASUREMENTS ON REDUCED PLANS, THE ABOVE SCALES MAY BE USED.

J.U.L.I.E.
JOINT UTILITY LOCATION INFORMATION FOR EXCAVATION
1-800-892-0123
OR 811

PROJECT MANAGER: ISAAC KWARTENG (847) 705-4230
PROJECT ENGINEER: JEAN-ALIX BRICE (847) 705-4552

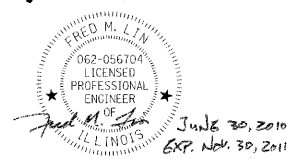
CONTRACT NO. 60J00

ELK GROVE TOWNSHIP Range 11E - 3rd. PM



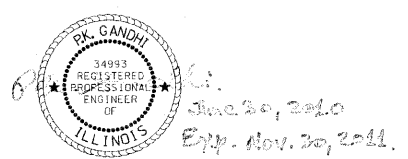
LOCATION MAP

GROSS AND NET LENGTH OF IMPROVEMENT = 771.23 FT. = 0.146 MILE

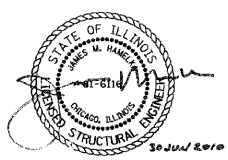


LIN ENGINEERING, LTD.,
FRED M. LIN
NO. 062-056704
EXPIRES 11-30-2011

Lin Engineering, Ltd.
Consulting Engineers
Chatham, Illinois Westmont, Illinois



Gandhi and Associates, Inc.
ENGINEERS AND PLANNERS
6035 N. NORTHWEST HIGHWAY
SUITE 306
CHICAGO, ILLINOIS 60631 TEL: (773) 774-5910



COLLINS ENGINEERS, INC.
JAMES M. HAMELKA
NO. 081-066116
EXPIRES 11-30-2010

Collins Engineers
123 N. WACKER DR., SUITE 300
CHICAGO, IL 60606
(312) 704-9300
ILLINOIS PROFESSIONAL DESIGN FIRM
LICENSE NO. 184-000993

STATE OF ILLINOIS
DEPARTMENT OF TRANSPORTATION
DIVISION OF HIGHWAYS

SUBMITTED June 30, 2010

Diana M. O'Keefe
DEPUTY DIRECTOR OF HIGHWAYS, REGION ONE ENGINEER

August 13, 2010
Scott E. Stitt, P.E.
acting ENGINEER OF DESIGN AND ENVIRONMENT

August 13, 2010
Christine M. Reed
DIRECTOR OF HIGHWAYS, CHIEF ENGINEER

**PRINTED BY THE AUTHORITY
OF THE STATE OF ILLINOIS**