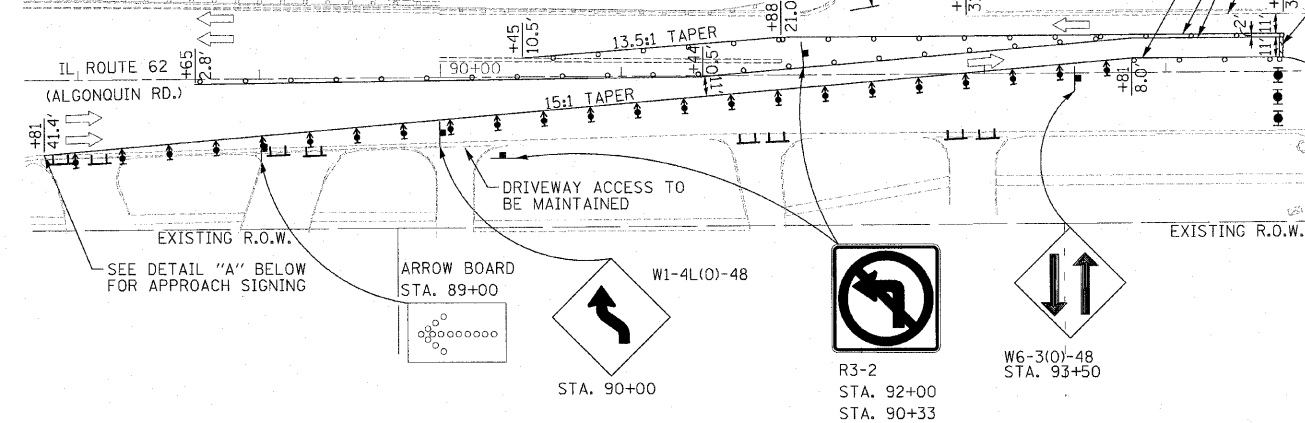


LEGEND

- WORK AREA
- IMPACT ATTENUATORS, TEMPORARY (FULLY REDIRECTIVE, NARROW), TEST LEVEL 3
- TYPE III BARRICADE
- TYPE I OR II BARRICADE
- TEMPORARY CONCRETE BARRIER
- DRUM WITH STEADY BURN MONODIRECTIONAL LIGHT (PER HWY. STD. 701606)
- DIRECTION INDICATOR BARRICADE WITH STEADY BURN MONODIRECTIONAL LIGHT (PER HWY. STD. 701606)
- SIGN

G20-2
STA. 88+00.00
END CONSTRUCTION

W20-I103(O)-48
ROAD CONSTRUCTION AHEAD
M6-4
R3-2
BARKER AVE.
200'
EXISTING R.O.W.

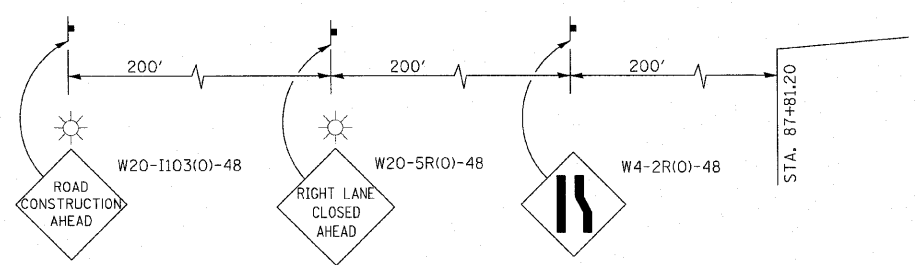
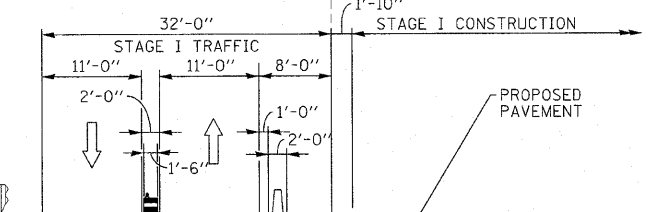


R3-2
STA. 96+00
WET REFLECTIVE TEMPORARY TAPE, TYPE III - LINE 4" (SOLID WHITE)
WET REFLECTIVE TEMPORARY TAPE, TYPE III - LINE 4" (SOLID YELLOW)
WET REFLECTIVE TEMPORARY TAPE, TYPE III - LINE 4" (SOLID WHITE)

TEMPORARY CONCRETE BARRIER
WET REFLECTIVE TEMPORARY TAPE, TYPE III - LINE 4" (SOLID WHITE)
WET REFLECTIVE TEMPORARY TAPE, TYPE III - LINE 4" (SOLID YELLOW)
WET REFLECTIVE TEMPORARY TAPE, TYPE III - LINE 4" (SOLID WHITE)

WET REFLECTIVE TEMPORARY TAPE, TYPE III - LINE 4" (SOLID WHITE)
WET REFLECTIVE TEMPORARY TAPE, TYPE III - LINE 4" (SOLID YELLOW)
WET REFLECTIVE TEMPORARY TAPE, TYPE III - LINE 4" (SOLID WHITE)
WET REFLECTIVE TEMPORARY TAPE, TYPE III - LINE 24" (SOLID WHITE)(TYP.)

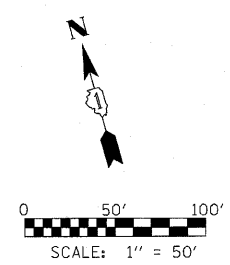
TEMPORARY CONCRETE BARRIER
WET REFLECTIVE TEMPORARY TAPE, TYPE III - LINE 4" (SOLID WHITE)
WET REFLECTIVE TEMPORARY TAPE, TYPE III - LINE 4" (SOLID YELLOW)
WET REFLECTIVE TEMPORARY TAPE, TYPE III - LINE 4" (SOLID WHITE), EXISTING R.O.W.



DETAIL "A"

- STAGE I CONSTRUCTION:**
- REMOVE CONFLICTING EXISTING PAVEMENT MARKING LINES, REFLECTORS AND SIGNS UNDER HIGHWAY STANDARD 701306.
 - SHIFT TRAFFIC TO EXISTING WB LANES, PROVIDING ONE 11' LANE IN EACH DIRECTION UNDER HIGHWAY STANDARD 701606 AND AS SHOWN IN THE PLANS.
 - UPON COMPLETION OF CONSTRUCTION AND REMOVAL OF TRAFFIC CONTROL, PROVIDE PROPOSED PAVEMENT MARKINGS AND MARKERS TO REVERT TO EXISTING MARKINGS CONFIGURATION, AND AS SHOWN ON THE PROPOSED PAVEMENT MARKING PLAN.

- NOTES:**
- ACCESS TO BE MAINTAINED TO DRIVEWAYS SHOWN IN THE PLANS.



| | | | | | | | | | | | | |
|---------------------|----------------------|----------------|-----------|---|---|-------------------------|---------------------------------|---|----------------------|--------------------|-----------------|--------------|
| FILE NAME = #FILEL# | USER NAME = #USER# | DESIGNED - SEW | REVISED - | STATE OF ILLINOIS DEPARTMENT OF TRANSPORTATION | MAINTENANCE OF TRAFFIC PLAN - STAGE 1 IL ROUTE 62 (ALGONQUIN ROAD) OVER SALT CREEK | | | F.A.P. RTE. 339 | SECTION 116-Y-2-BR-1 | COUNTY COOK | TOTAL SHEETS 74 | SHEET NO. 16 |
| | PLOT SCALE = #SCALE# | DRAWN - SEW | REVISED - | | SCALE: 1" = 50' | SHEET NO. 1 OF 2 SHEETS | STA. 88+00.00 TO STA. 101+00.00 | FED. ROAD DIST. NO. ILLINOIS FED. AID PROJECT | | CONTRACT NO. 60J00 | | |
| | PLOT DATE = #DATE# | CHECKED - FML | REVISED - | | | | | | | | | |
| | | DATE - 2/2010 | REVISED - | | | | | | | | | |